

6

5

4

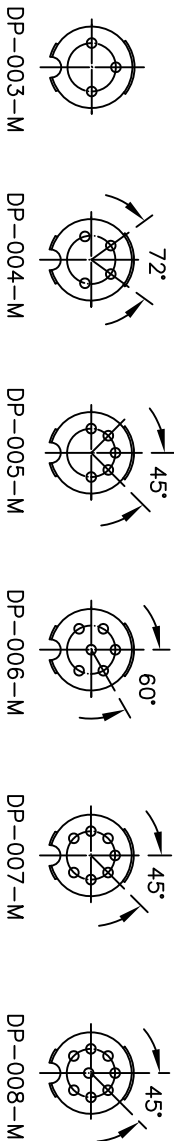
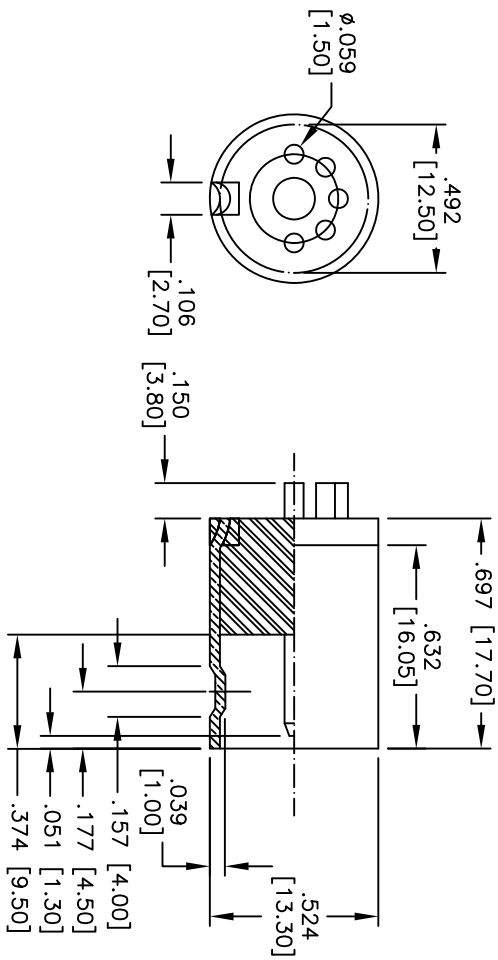
3

2

1

APPROVED: _____
 DATE: _____ TITLE: _____

Rev	AWO #	Description	Date	Appr
-		RELEASED	5/29/07	
A	10521	REDRAWN	9/10/10	



SPECIFICATIONS:

Material: _____
 Housing: ABS
 Contact: Brass, Nickel plated
 Metal Shell: Brass, Nickel plated
 Electrical: _____
 Rating: 100V AC max. or 12V DC, 2A max.
 Insulation resistance: 50 Mohms min. @250V DC
 Withstanding voltage: 250 VAC for 1 minute
 Environmental: _____
 Lead free, RoHS compliant.



UNLESS OTHERWISE SPECIFIED
 ALL DIMENSIONS ARE IN INCHES [MM]
 TOLERANCES: EXCEPT AS NOTED
 INCHES Holes

.X	± .10	ØXX	± .10
.XX	± .020	ØXXX	± .015
.XXX	± .015	ØXXXX	± .010

APPROVALS: _____ DATE: _____

DRAWN	SS	5/29/07
CHECKED		
APPROVED		

ADAM TECH

909 Rahway Avenue, Union, NJ 07083
 Phone: 908-687-5000 Fax: 908-687-5710

DIN PLUG MOLDING TYPE

SIZE	PART NO.	REV.
X	DP-XXX-M	A
REF: S0087T	SCALE: NTS	SHEET 1 OF 2

6

5

4

3

2

1