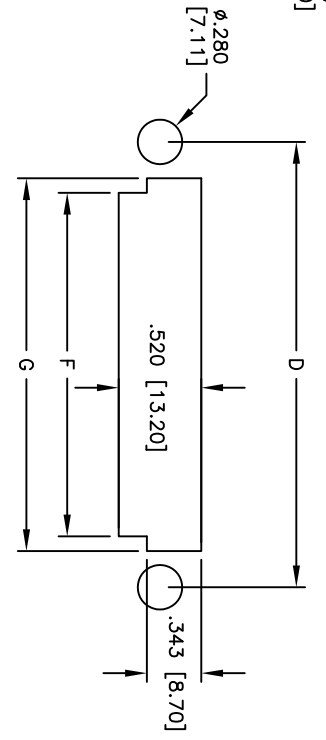
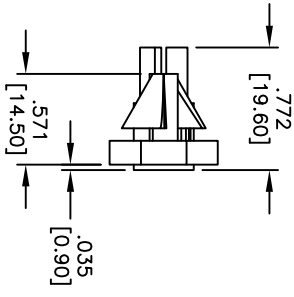
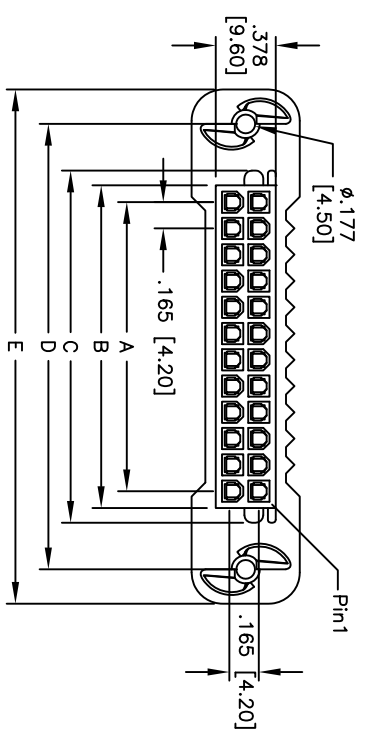


Rev	AWO #	Description	Date	Appr
-		RELEASED	10/14/10	

APPROVED: _____
 DATE: _____ TITLE: _____

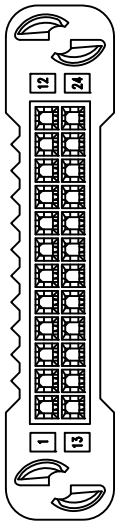


RECOMMENDED PANEL CUT-OUT
 FOR 1.27±0.3mm THICKNESS PANEL

Current rating and wire size:
 Maximum current rating (Amperes)

Ckt Size	Wire	Amperes
2	AWG#16	4, 6
	AWG#18	8
	AWG#20	7
	AWG#22	5
	AWG#24	4
	AWG#26	3
	AWG#28	1

Positions: 2 thru 24
 A = .165 [4.20] x No. of Spaces
 B = A + .213 [5.40]
 C = A + .398 [10.10]
 D = A + .984 [25.00]
 E = A + 1.417 [36.00]
 F = A + .343 [8.70]
 G = A + .528 [13.40]



SPECIFICATIONS:

Material: Nylon 66, rated UL 94V-0
 Insulator color: Natural
 Operating voltage: 600V AC, DC
 Insulation resistance: 1000 mohms min @ DC 500V
 Dielectric withstanding voltage: 1500 VAC for 1 minute
 Temperature range: -40°C to +105°C
 Environmental:
 Lead free, RoHS compliant.
 Recommended soldering temp: 235°C for 5 sec.



ADAM TECH

909 Railway Avenue, Union, NJ 07083
 Phone: 908-687-5000 Fax: 908-687-5710

.165 [4.20] CRIMP THERMINAL HOUSING

UNLESS OTHERWISE SPECIFIED ALL DIMENSIONS ARE INCHES [MM]	
TOLERANCES: EXCEPT AS NOTED	
INCHES	HOLES
.X ± .10	Ø.X ± .10
.XX ± .020	Ø.XX ± .015
.XXX ± .015	Ø.XXX ± .010
APPROVALS	DATE
DRAWN DY	10/14/10
CHECKED	
APPROVED	

SIZE	PART NO.	REV.
X	DMY-XX-V0	-
REF: S00004F	SCALE: NTS	SHEET 1 OF 1