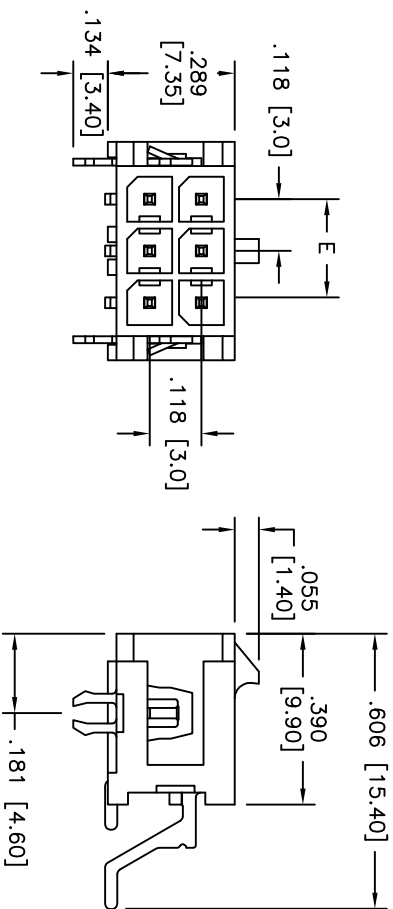
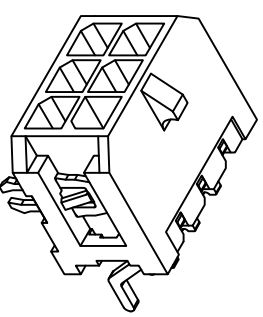
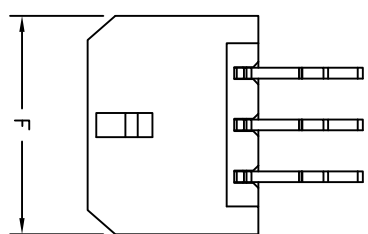
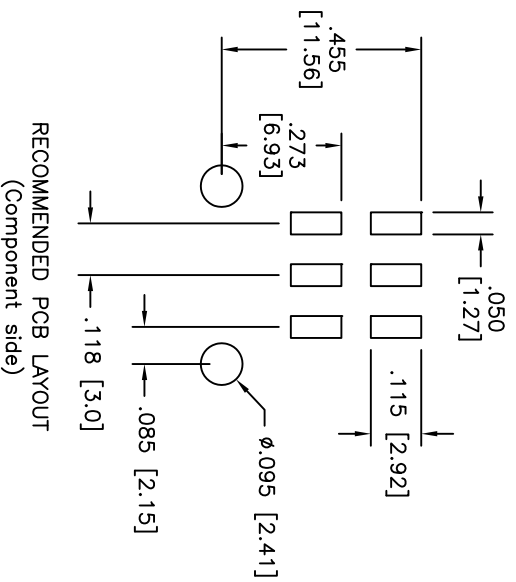


Rev	AWO #	Description	Date	Appr
-		RELEASED	11/12/07	

APPROVED: _____

DATE: _____ TITLE: _____



Dimensional Information: (mm)

CIRCUITS	DIM. E	DIM. F	CIRCUITS	DIM. E	DIM. F
2	6.65	14	18.0	24.65	
4	3.0	9.65	16	21.0	27.65
6	6.0	12.65	18	24.0	30.65
8	9.0	15.65	20	27.0	33.65
10	12.0	18.65	22	30.0	36.65
12	15.0	21.65	24	33.0	39.65

SPECIFICATIONS:

Material:
 Insulator: LCP, rated UL 94V-0
 Insulator color: Black
 Contacts: Brass
Plating:
 Tin over Copper underplate overall

Electrical:

Operating voltage: 250V AC, DC
 Current rating: 5A AC, DC
 Contact resistance: 10 mohms max.
 Dielectric withstanding voltage: 1500 VAC for 1 minute
Temperature Rating:
 Ambient temperature: -25°C to +85°C
 Environmental:
 Lead free, RoHS compliant.
 Recommended soldering temp: 260°C for 5 sec.



ADAM TECH

909 Rahway Avenue, Union, NJ 07083
 Phone: 908-687-5000 Fax: 908-687-5710

118" [3.0MM] HOUSING & TERMINAL, DUAL ROWS
 SMT TYPE, RIGHT ANGLE

UNLESS OTHERWISE SPECIFIED ALL DIMENSIONS ARE IN INCHES [MM]	
TOLERANCES: EXCEPT AS NOTED	
INCHES	HOLDS
.X ± .10	ØX ± .10
.XX ± .020	ØXX ± .015
.XXX ± .015	ØXXX ± .010
APPROVALS	DATE
DRAWN SHIREN	11/12/07
CHECKED	
APPROVED	

TITLE	SIZE	PART NO.	REV.
118" [3.0MM] HOUSING & TERMINAL, DUAL ROWS SMT TYPE, RIGHT ANGLE	X	DML-XX-A-H-T-SMT	-
REF:	SCALE: NTS	SHEET 1 OF 1	