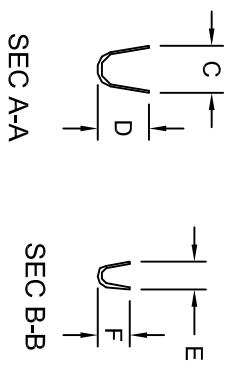
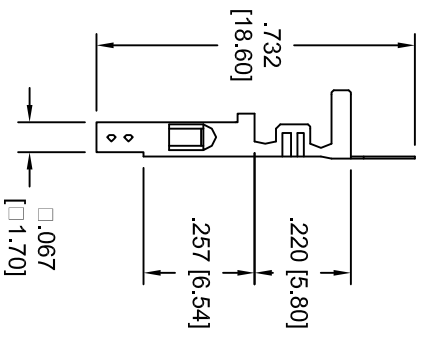
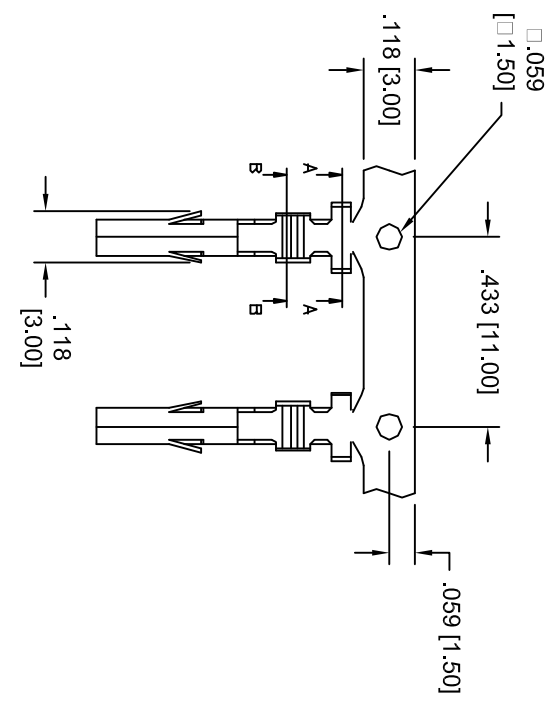


Rev	AWO #	Description	Date	Appr
-		RELEASED	8/11/05	

APPROVED: \_\_\_\_\_  
 DATE: \_\_\_\_\_ TITLE: \_\_\_\_\_



WIRE SIZE	CIRCUITS		
AWG	2	4-6	8-10
18	9 A	8 A	7 A
20	7 A	6 A	5 A
22	5 A	4 A	4 A
24	4 A	3 A	3 A

PART #	WIRE AWG	DIMENSIONS			
		C	D	E	F
DMH-A-C-F-MT-R	22 ~ 24	.134 [3.4]	.130 [3.3]	.098 [2.5]	.090 [2.3]
DMH-B-C-F-MT-R	18 ~ 22	.157 [4.0]	.177 [4.5]	.098 [2.5]	.090 [2.3]
DMH-C-C-F-MT-R	16 ~ 18	.157 [4.0]	.177 [4.5]	.110 [2.8]	.106 [2.7]

**SPECIFICATIONS:**  
 Material: \_\_\_\_\_  
 Contacts: Brass  
 Plating: \_\_\_\_\_  
 Matt Tin over Nickel underplate overall

**Electrical:**  
 Operating voltage: 600 VAC max  
 Current rating: / Contact (See Chart)  
 Contact resistance: 10 mohms max  
 Environmental: \_\_\_\_\_  
 Lead free, RoHS compliant.

**ADAM TECH**  
 909 Rahway Avenue, Union, NJ 07083  
 Phone: 908-687-5000 Fax: 908-687-5710

TITLE: CRIMP CONTACT, DMH SERIES  
 FEMALE, MATT TIN PLATED, ON REELS

UNLESS OTHERWISE SPECIFIED  
 ALL DIMENSIONS ARE INCHES [MM]  
 TOLERANCES: EXCEPT AS NOTED

.X	± .10	Ø.X	± .10
.XX	± .020	Ø.XXX	± .015
.XXX	± .015	Ø.XXXX	± .010

APPROVALS

DRAWN	SS	DATE	8/11/05
CHECKED			
APPROVED			

SIZE	PART NO.	REV.
X	DMH-X-C-F-MT-R	-
REF:	SCALE: NTS	SHEET 1 OF 1