

6

5

4

3

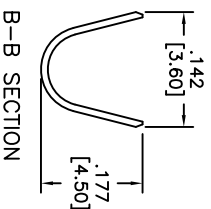
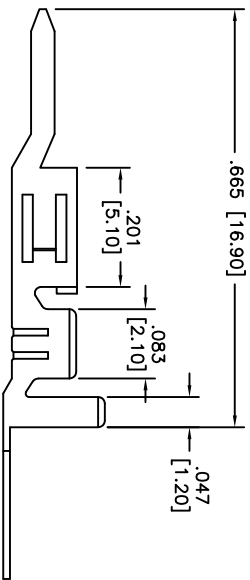
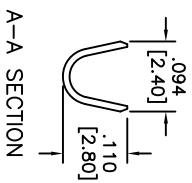
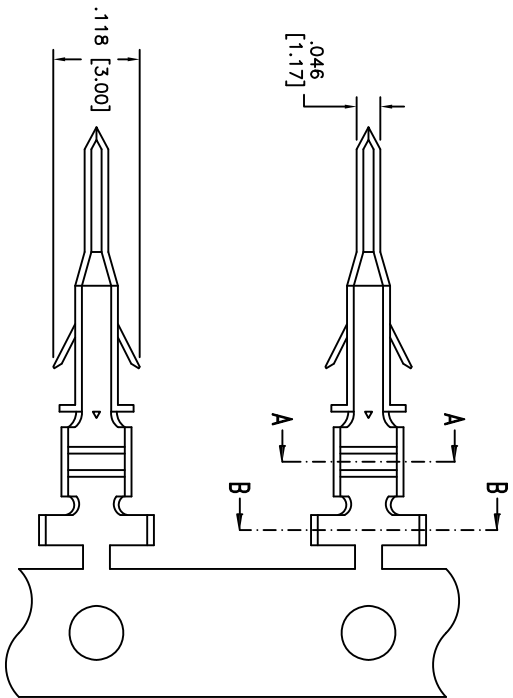
2

1

Rev	AWO #	Description	Date	Appr
-		RELEASED	10/27/10	

APPROVED: _____

DATE: _____ TITLE: _____



SPECIFICATIONS:

- Material: Brass
- Contacts: Brass
- Plating: Tin over Copper underplate overall
- Electrical:
 - Voltage rating: 600V AC, DC
 - Contact resistance: 10 mohms max. initial
 - Dielectric withstanding voltage: 1500 VAC for 1 minute
 - Wire size (AWG): #16
 - Temperature Rating: Operating temperature: -40°C to +105°C
 - Environmental: Lead free, RoHS compliant.



ADAM TECH

909 Rahway Avenue, Union, NJ 07083
 Phone: 908-687-5000 Fax: 908-687-5710

TITLE: CRIMP CONTACT, DMF SERIES
 TIN PLATED, ON REELS

UNLESS OTHERWISE SPECIFIED ALL DIMENSIONS ARE INCHES [MM] TOLERANCES: EXCEPT AS NOTED		INCHES		HOLDS	
.X	± .10	ØX	± .10		
.XX	± .020	ØXXX	± .015		
.XXX	± .015	ØXXX	± .010		
APPROVALS		DATE			
DRAWN	DY	10/27/10			
CHECKED					
APPROVED					
SIZE	PART NO.	DMF-C-C-M-R		REV.	
X					
REF:	S00123T	SCALE:	NTS	SHEET	1 OF 1

6

5

4

3

2

1