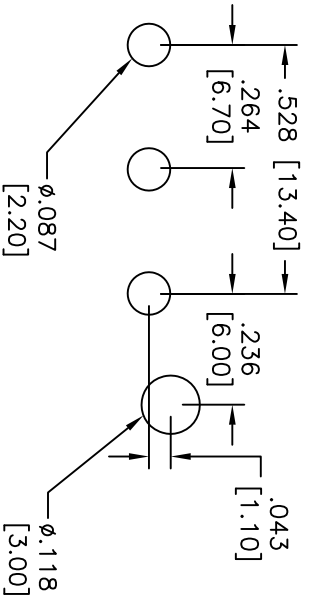
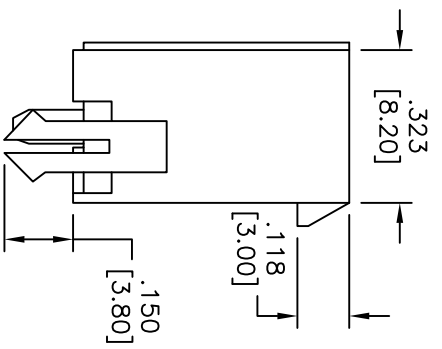
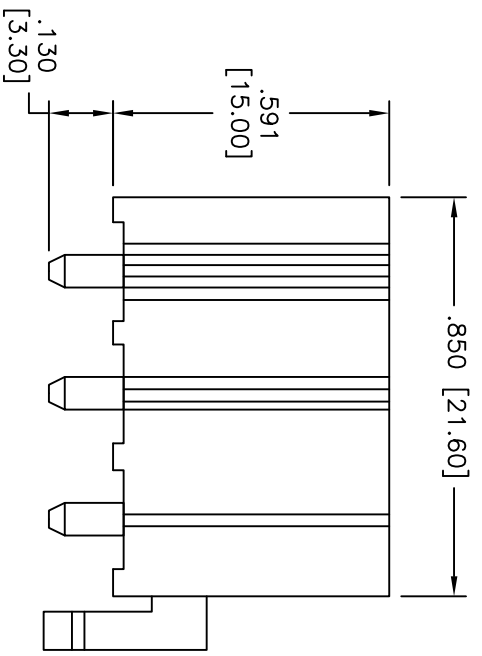
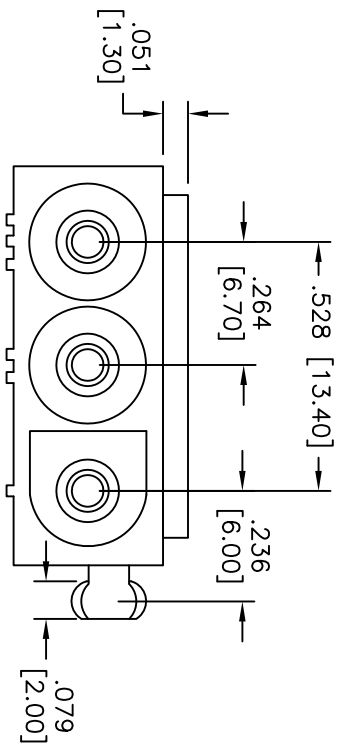


Rev	AWO #	Description	Date	Appr
-		RELEASED	1/6/11	

APPROVED: _____
 DATE: _____ TITLE: _____



RECOMMENDED PANEL HOLE

SPECIFICATIONS:

Material: Nylon66, rated UL94V-2
 Insulator color: Natural
 Contact: Brass, Matte Tin plated
Electrical:
 Current rating: 11A
 Voltage rating: 600V AC/DC
 Insulation resistance: 5,000 Mohms min.
 Withstand voltage: 5000V AC/ minute
 Temperature range: -40°C to +105°C
Environmental:
 Lead free, RoHS compliant.
 Recommended soldering temp: 235°C for 5 sec.

UNLESS OTHERWISE SPECIFIED
 ALL DIMENSIONS ARE INCHES [MM]
 TOLERANCES: EXCEPT AS NOTED

INCHES	HOLES
.X ± .10	ØX ± .10
.XX ± .020	ØXX ± .015
.XXX ± .015	ØXXX ± .010

APPROVALS

DATE	DATE
AV	1/6/11
JL	1/6/11

ADAM TECH
 909 Rahway Avenue, Union, NJ 07083
 Phone: 908-687-5000 Fax: 908-687-5710

TITLE: .264 [6.70] WIRE TO WIRE, FEMALE
 3 POLES, VERTICAL, MATTE TIN PLATED

SIZE	PART NO.	REV.
X	DME-A-03-V-MT	-

REF: S00123T SCALE: NTS SHEET 1 OF 1

