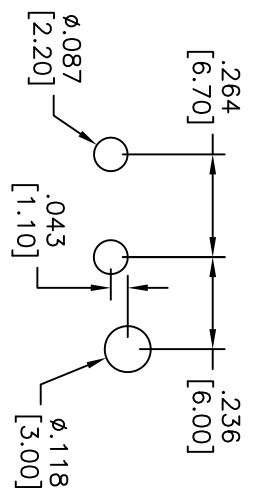
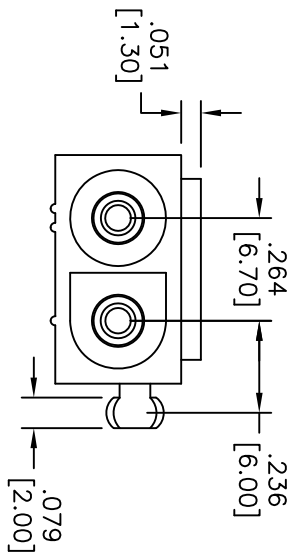


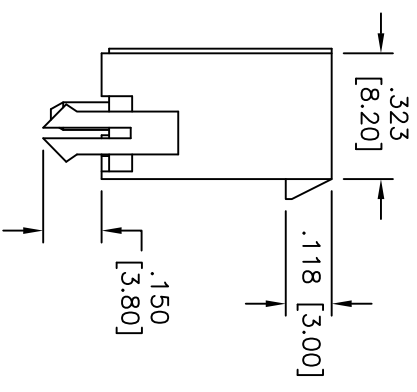
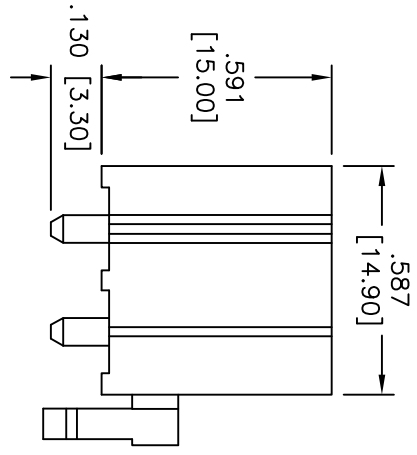
Rev	AWO #	Description	Date	Appr
-		RELEASED	1/19/11	

APPROVED: _____

DATE: _____ TITLE: _____



RECOMMENDED PCB LAYOUT



SPECIFICATIONS:

Material: Insulator: Nylon66, rated UL94V-2

Insulator color: Natural

Contact: Brass, Tin plated

Electrical: Current rating: 12A AC, DC

Voltage rating: 600V AC, DC

Dielectric withstanding voltage: 5000V AC rms

Ambient temperature range: -40°C to +105°C

Environmental: Lead free, RoHS compliant.

Recommended soldering temp: 235°C for 5 sec.



UNLESS OTHERWISE SPECIFIED
ALL DIMENSIONS ARE INCHES [MM]
TOLERANCES EXCEPT AS NOTED

INCHES	HOLES
.X ± .10	ØX ± .10
.XX ± .020	ØXX ± .015
.XXX ± .015	ØXXX ± .010

APPROVALS

DATE	DATE

DRAWN: DY 1/19/11

CHECKED:

APPROVED:

ADAM TECH
909 Railway Avenue, Union, NJ 07083
Phone: 908-687-5000 Fax: 908-687-5710

TITLE: .264 [6.70] WIRE TO BOARD, A TYPE
2 POLES, VERTICAL

SIZE	PART NO.	DWG NO.	REV.
X		DME-A-02-V	-

REF: S00123T SCALE: NTS SHEET 1 OF 1