

6

5

4

3

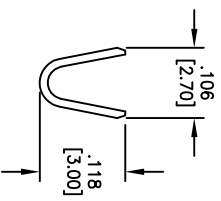
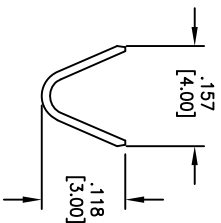
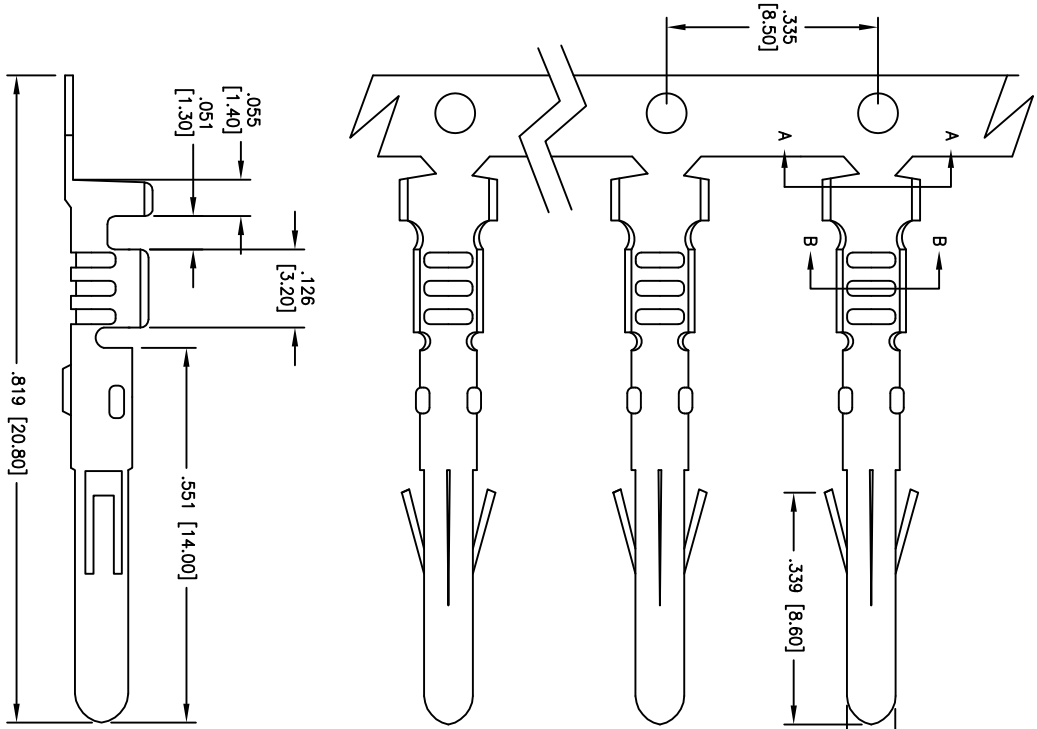
2

1

APPROVED: _____

DATE: _____ TITLE: _____

Rev	AWO #	Description	Date	Appr
-		RELEASED	6/25/09	
A		REDRAWN	4/01/10	



SECTION A-A

SECTION B-B

SPECIFICATIONS:

Material: Brass, Tin plated
 Thickness: 0.25mm
 Wire Range: Suitable for AWG#16~18
 Insulation O.D: 2.5 mm (max)
 Environmental:
 Lead free, RoHS compliant.



UNLESS OTHERWISE SPECIFIED
 ALL DIMENSIONS ARE INCHES [MM]
 TOLERANCES: EXCEPT AS NOTED
 INCHES: .10 ϕ .10
 .XX ± .020 ϕ .XX ± .015
 .XXX ± .015 ϕ .XXX ± .010

ADAM TECH
 909 Rahway Avenue, Union, NJ 07083
 Phone: 908-687-5000 Fax: 908-687-5710

TITLE: MALE CRIMP FOR DDH SERIES
 TIN PLATED, ON REELS

APPROVALS	DATE
DRAWN DY	6/25/09
CHECKED	
APPROVED	

SIZE	PART NO.	REV.
X	DMC-01-R	A
REF: S00016T	SCALE: NTS	SHEET 1 OF 1

6

5

4

3

2

1