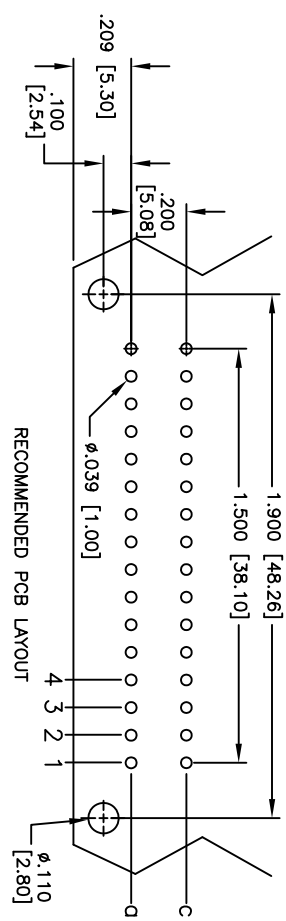
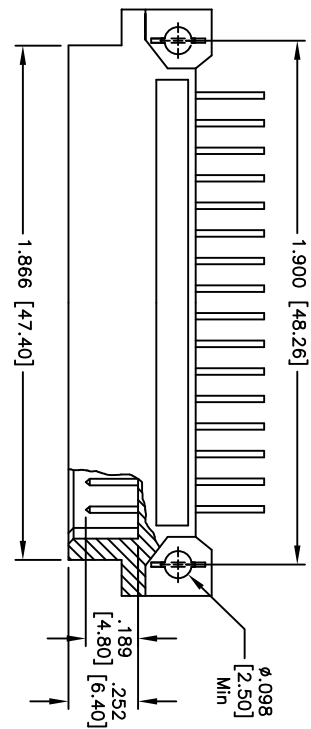
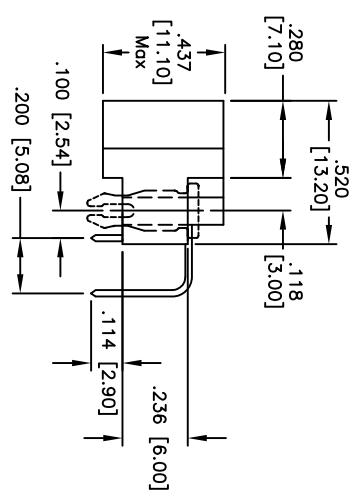
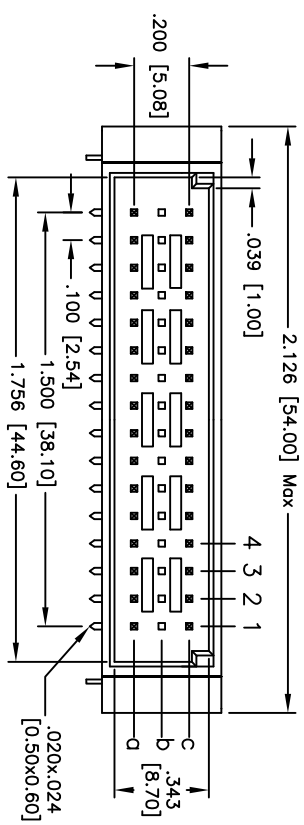


Rev	AWO #	Description	Date	Appr
-		RELEASED	3/01/11	

APPROVED: _____
 DATE: _____ TITLE: _____



RECOMMENDED PCB LAYOUT



"X" PLATING	CLASS
1 30 u" Gold	1
2 15 u" Gold	2
3 Gold Flash	3

SPECIFICATIONS:

Material:
 Insulator: PBT, glass reinforced, rated UL 94V-0
 Insulator color: Beige
 Contacts: Copper Alloy
Plating:
 X Gold over Nickel underplate on contact area,
 Tin over Copper underplate on tails.
 (See chart for thickness)

Electrical:

Current rating: 2 Amps max
 Contact resistance: 20 mohms max
 Insulation resistance: 1000 Mohms min
 Dielectric withstanding voltage: 1000 VAC for 1 minute
Temperature Rating:
 Operating temperature: -55°C to +125°C
 Environmental:
 Lead free, RoHS compliant.
 Recommended soldering temp: 235°C for 5 sec.



UNLESS OTHERWISE SPECIFIED
 ALL DIMENSIONS ARE INCHES [MM]
 TOLERANCES: EXCEPT AS NOTED
 INCHES Holes
 .X ± .10 Ø.X
 .XX ± .020 Ø.XX
 .XXX ± .015 Ø.XXX
 APPROVALS DATE

ADAM TECH
 909 Railway Avenue, Union, NJ 07083
 Phone: 908-687-5000 Fax: 908-687-5710

TITLE: DIN TYPE HALF C MALE, 32 PIN LOADED
 3 ROW RIGHT ANGLE, ROW A& C LOADED

DRAWN	DY	3/01/11	SIZE	PART NO.	REV.
CHECKED			X	DIN-32MR-S32-A1CX-BL	
APPROVED			REF:	S00068T	SCALE: NTS