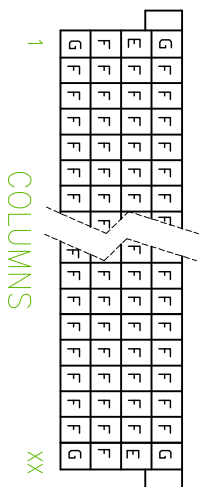
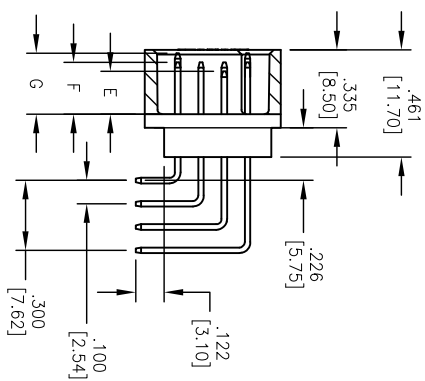
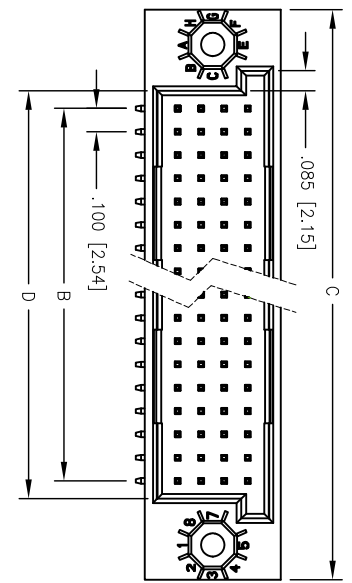
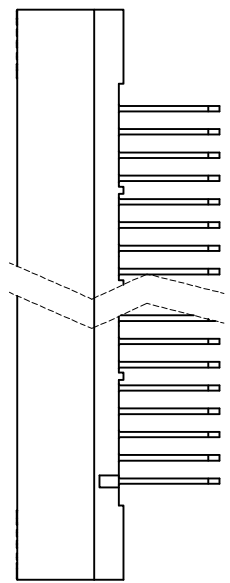


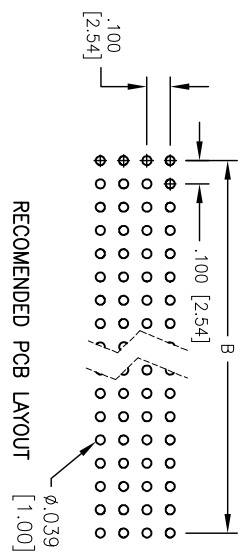
Rev	AWO #	Description	Date	Appr
-		RELEASED	12/20/10	

APPROVED: \_\_\_\_\_ TITLE: \_\_\_\_\_  
 DATE: \_\_\_\_\_



COLUMNS

XX



"X"	PLATING
C1	30 u" Gold
C2	15 u" Gold
C3	Gold Flash

Contact Length	E	F	G
100	3.260 [82.25]	2.400 [60.96]	2.260 [56.82]
128	3.960 [100.33]	3.100 [78.74]	2.860 [72.65]
160	4.750 [120.65]	3.900 [99.06]	3.650 [92.71]
200	5.750 [144.65]	4.900 [124.46]	4.650 [118.43]
240	6.750 [171.45]	5.900 [149.86]	5.650 [143.32]

**SPECIFICATIONS:**

Material: Insulator: PBT, glass reinforced, rated UL 94V-0  
 Contacts: Copper Alloy  
 Plating: Gold over Nickel underplate on contact area, Tin over Copper underplate on solder tails.  
 (See chart for thickness)  
 Electrical: Current rating: 2 Amps max  
 Contact resistance: 20 mohms max  
 Insulation resistance: 1000 Mohms min  
 Dielectric withstanding voltage: 1000 VAC for 1 minute  
 Temperature Rating: Operating temperature: -55°C to +125°C  
 Environmental: Lead free, RoHS compliant.  
 Recommended soldering temp: 235°C for 5 sec.

**ADAM TECH**

909 Rahway Avenue, Union, NJ 07083  
 Phone: 908-687-5000 Fax: 908-687-5710

DIN 41612, MALE, RIGHT ANGLE  
 PCB MOUNT

UNLESS OTHERWISE SPECIFIED ALL DIMENSIONS ARE MM [INCHES] TOLERANCES: EXCEPT AS NOTED INCHES	
X	± .10
.XX	± .020
.XXX	± .015
XXX	± .015
ØX	± .10
ØXX	± .015
ØXXX	± .010
APPROVALS	DATE
DRAWN AY	12/20/10
CHECKED AW	12/20/10
APPROVED	

TITLE	DIN-128-MR-L44-A1CX
SIZE	PART NO.
REF:	S0008T
SCALE:	NTS
SHEET:	1 OF 1

