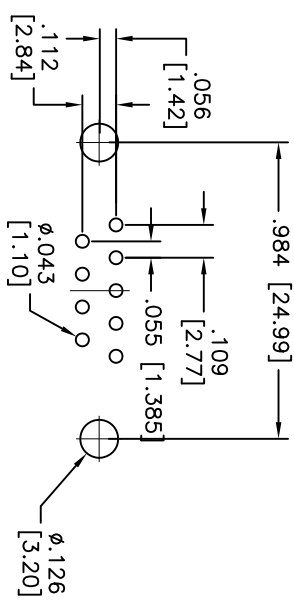
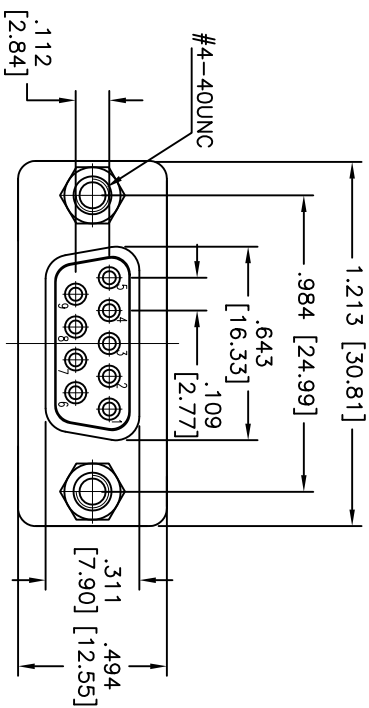


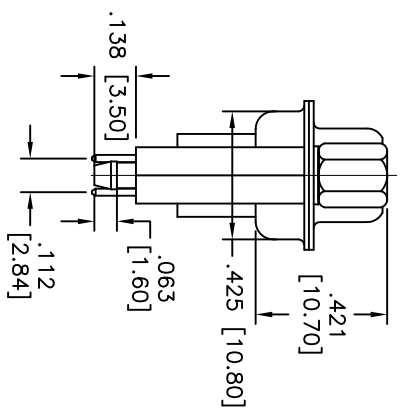
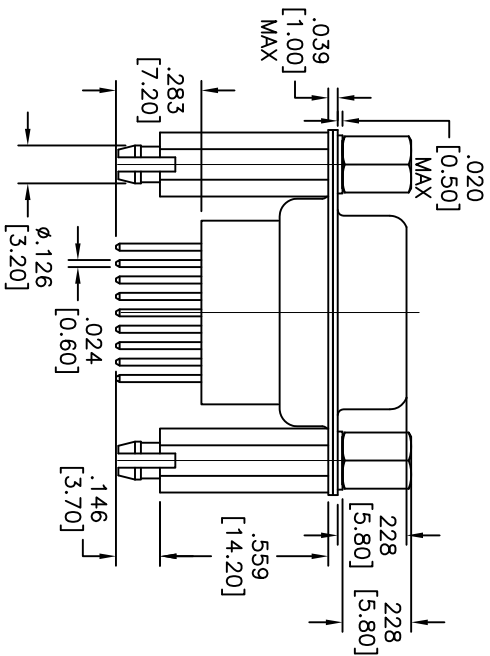
Rev	AWO #	Description	Date	Appr
-		RELEASED	12/2/10	

APPROVED: _____

DATE: _____ TITLE: _____



RECOMMENDED PCB LAYOUT



SPECIFICATIONS:

- Material: PBT, glass reinforced, rated UL 94V-0
- Insulator color: Black
- Contacts: Copper Alloy
- Shell: Steel, Tin plated
- Hardware: Brass, Nickel plated
- Plating: Gold flash over Nickel underplate overall

- Electrical:
 - Operating voltage: 250 VAC max
 - Current rating: 3 Amps max
 - Contact resistance: 25 mohms max
 - Insulation resistance: 5,000 Mohms min
 - Dielectric withstanding voltage: 1,000 VAC for 1 minute
- Temperature Rating:
 - Operating temperature: -55°C to +85°C



Lead free, RoHS compliant
Recommended soldering temp: 235°C for 5 seconds

ADAM TECH

909 Railway Avenue, Union, NJ 07083
Phone: 908-687-5000 Fax: 908-687-5710

D-SUB SOCKET, HIGH PROFILE, RIVETED

TITLE	#4-40 JACKSCREWS & STANDOFFS W/BOARDLOCKS		
SIZE	PART NO.	SCALE:	SHEET 1 OF 1
X	DE09-SE-3-BL/14.2-JS	MKS	1

UNLESS OTHERWISE SPECIFIED ALL DIMENSIONS ARE INCHES [MM] TOLERANCES: EXCEPT AS NOTED	
INCHES	HOLES
.X ± .10	ØXX ± .10
.XX ± .020	ØXXX ± .015
.XXX ± .015	ØXXXX ± .010
APPROVALS	DATE
DRAWN AY	12/2/10
CHECKED AW	12/2/10
APPROVED	