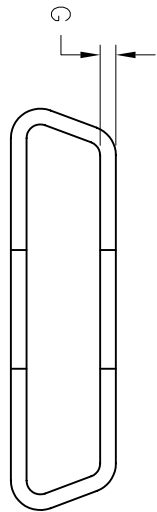
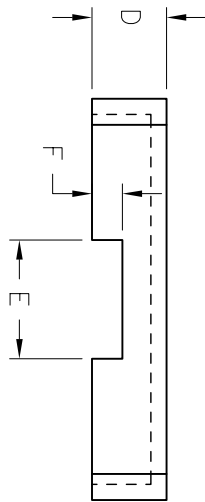
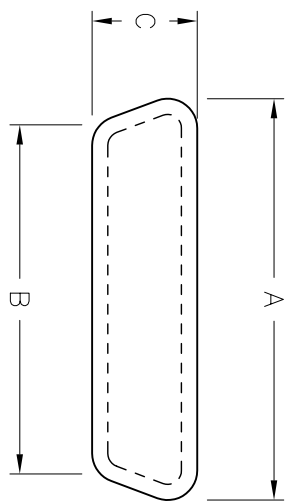


Rev	AWO #	Description	Date	Appr
-		RELEASED	9/16/05	

APPROVED: _____
 DATE: _____ TITLE: _____



POSITION	A	B	C	D	E	F	G
09	.787 [20.0]	.705 [17.9]	.484 [12.3]	.303 [7.7]	.319 [8.1]	.110 [2.8]	.059 [1.5]
15	1.157 [29.4]	.976 [24.8]	.492 [12.5]	.299 [7.6]	.394 [10.0]	.126 [3.2]	.067 [1.7]
25	1.677 [42.6]	1.496 [38.0]	.480 [12.2]	.299 [7.6]	.472 [12.0]	.114 [2.9]	.067 [1.7]
37	2.350 [59.7]	2.181 [55.4]	.484 [12.3]	.299 [7.6]	.551 [14.0]	.122 [3.1]	.067 [1.7]
50	2.244 [57.0]	2.106 [53.5]	.583 [14.8]	.319 [8.1]	.551 [14.0]	.110 [2.8]	.059 [1.5]

UNLESS OTHERWISE SPECIFIED
 ALL DIMENSIONS ARE INCHES [MM]
 TOLERANCES: EXCEPT AS NOTED
 INCHES HOLES

.X ± .10 Ø.X ± .10
 .XX ± .020 Ø.XXX ± .015
 .XXX ± .015 Ø.XXXX ± .010

APPROVALS	DATE
DRAWN	SS
CHECKED	
APPROVED	

ADAM TECH
 909 Ratway Avenue, Union, NJ 07083
 Phone: 908-687-5000 Fax: 908-687-5710

TITLE: DUST COVER, MALE D-SUB SERIES
 W/ METAL SHELL

SPECIFICATIONS:
 Material:
 Insulator: PVC, rated UL 94V-0
 Insulator color: Transparent white
Temperature Rating:
 Operating temperature: -65°C to +125°C
 Environmental:
 RoHS compliant.



SIZE	PART NO.	REV.
X	DCM-XX	

REF: SCALE: NTS SHEET 1 OF 1