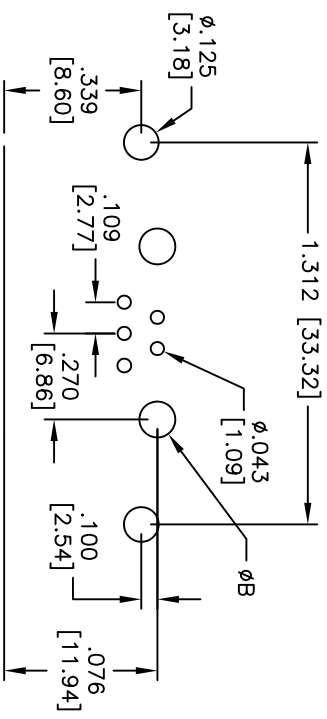
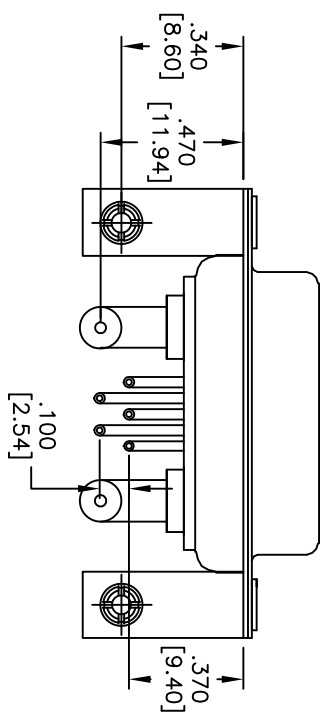
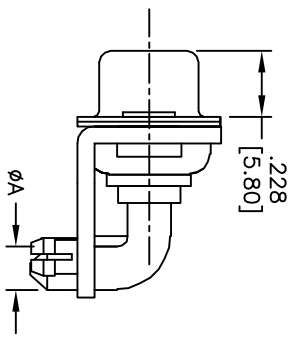
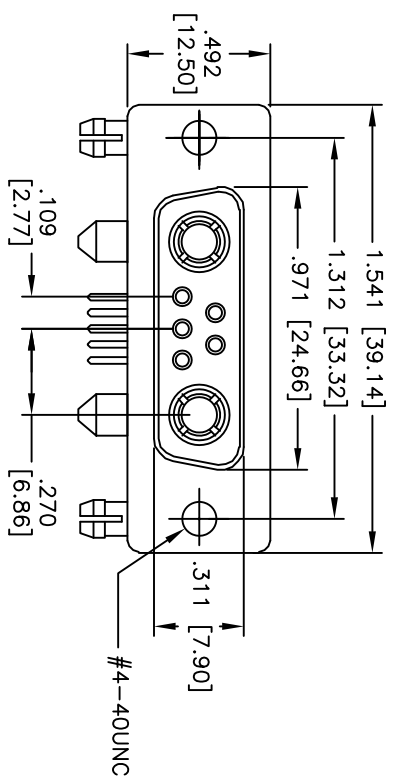


Rev	AWO #	Description	Date	Appr
-		RELEASED	7/28/10	

APPROVED: _____
 DATE: _____ TITLE: _____



RECOMMENDED PCB LAYOUT

PART NO.	CURRENT RATING	DIMENSION	
		ØA	ØB
D7W2-SLP-3-2-BL	10 AMPS	Ø.067 [1.70]	Ø.087 [2.20]
D7W2-SLP-4-2-BL	20 AMPS	Ø.110 [2.80]	Ø.129 [3.28]
D7W2-SLP-5-2-BL	30 AMPS	Ø.126 [3.20]	Ø.144 [3.65]
D7W2-SLP-6-2-BL	40 AMPS	Ø.148 [3.75]	Ø.165 [4.20]

ADAM TECH

909 Rahway Avenue, Union, NJ 07083
 Phone: 908-687-5000 Fax: 908-687-5710

TITLE: D-SUB, FEMALE POWER, D7W2, RIGHT
 ANGLE, PCB 10A, 20A, 30A OR 40A

SPECIFICATIONS:
 Material: Insulator: PBT, glass reinforced, rated UL 94V-0
 Insulator color: Black
 Contacts: Brass
 Shell: Steel, Tin plated
 Hardware: Brass, Nickel plated
 Plating: Gold flash over Nickel underplate overall
 Electrical: Current rating: 10, 20, 30 or 40 Amps max. (See Chart)
 Insulation resistance: 5,000 Mohms min
 Dielectric withstanding voltage: 1,000 VAC for 1 minute
 Temperature Rating: Operating temperature: -55°C to +125°C
 Environmental: Lead free, RoHS compliant
 Recommended soldering temp: 235°C for 5 seconds



UNLESS OTHERWISE SPECIFIED ALL DIMENSIONS ARE INCHES [MM]		TOLERANCES: EXCEPT AS NOTED	
INCHES		HOLES	
.X	± .10	Ø.X	± .10
.XX	± .020	Ø.XXX	± .015
.XXX	± .015	Ø.XXXX	± .010
APPROVALS		DATE	
DRAWN	DY	7/28/10	
CHECKED			
APPROVED			
REF: S0009T	SCALE: NTS	SHEET 1 OF 1	REV: -