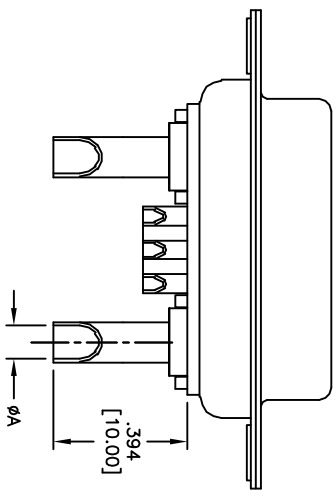
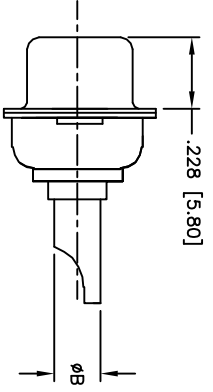
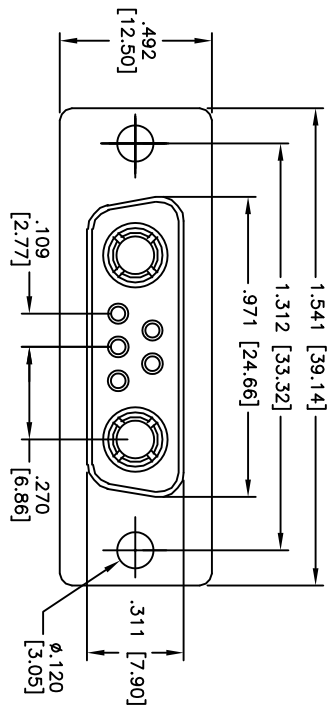


Rev	AWO #	Description	Date	Appr
-		RELEASED	6/24/10	

APPROVED: \_\_\_\_\_  
 DATE: \_\_\_\_\_ TITLE: \_\_\_\_\_



ADAM TECH PART NO.	CURRENT RATING	WIRE SIZE	DIMENSION	
			A	B
D7W2-SDP-6	40 AMPS	8-10 AWG	$\phi .181 [4.60]$	$\phi .216 [5.50]$
D7W2-SDP-5	30 AMPS	10-12 AWG	$\phi .146 [3.70]$	$\phi .181 [4.60]$
D7W2-SDP-4	20 AMPS	12-14 AWG	$\phi .106 [2.70]$	$\phi .141 [3.60]$
D7W2-SDP-3	10 AMPS	16-18 AWG	$\phi .067 [1.70]$	$\phi .098 [2.50]$

**SPECIFICATIONS:**

Material: PBT, glass reinforced, rated UL 94V-0  
 Insulator color: Black  
 Contacts: Brass  
 Shell: Steel, Tin plated  
 Hardware: Brass, Nickel plated  
 Plating: Gold flash over Nickel underplate overall  
 Electrical:  
 Current rating: 10 - 40 Amps max (See Chart)  
 Contact resistance: 10 mohms max  
 Insulation resistance: 5,000 Mohms min  
 Dielectric withstanding voltage: 1,000 VAC for 1 minute  
 Temperature Rating: Operating temperature: -55°C to +125°C  
 Environmental:  
 Lead free, RoHS compliant



**ADAM TECH**

909 Rahway Avenue, Union, NJ 07083  
 Phone: 908-687-5000 Fax: 908-687-5710

TITLE: D-SUB POWER SOCKET, D7W2, STRAIGHT, FEMALE, SOLDER CUP

UNLESS OTHERWISE SPECIFIED ALL DIMENSIONS ARE INCHES [MM] TOLERANCES: EXCEPT AS NOTED	
.X ± .10	$\phi X \pm .10$
.XX ± .020	$\phi XX \pm .015$
.XXX ± .015	$\phi XXX \pm .010$
APPROVALS	DATE
DRAWN DY	6/24/10
CHECKED	
APPROVED	

SIZE X	PART NO. D7W2-SDP-X	REV. -
REF: S00019T	SCALE: NTS	SHEET 1 OF 1