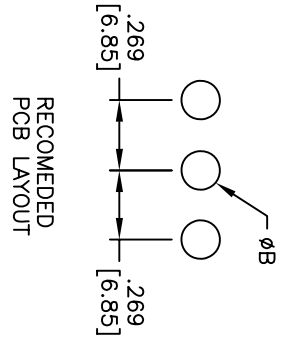
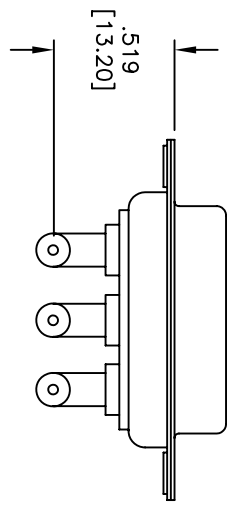
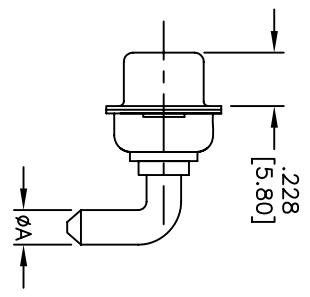
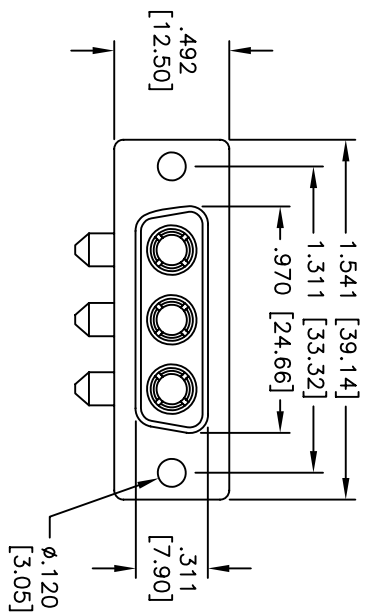


Rev	AWO #	Description	Date	Appr
-		RELEASED	6/19/06	

APPROVED: _____
 DATE: _____ TITLE: _____



PART NO.	CURRENT RATING	DIMENSION	
		ϕA	ϕB
D3W3-SLP-10-1	10 AMPS	$\phi .067$ [1.70]	$\phi .086$ [2.20]
D3W3-SLP-20-1	20 AMPS	$\phi .110$ [2.80]	$\phi .129$ [3.28]
D3W3-SLP-40-1	40 AMPS	$\phi .147$ [3.75]	$\phi .165$ [4.20]

SPECIFICATIONS:

- Material: Insulator: PBT, glass reinforced, rated UL 94V-0
- Insulator color: Black
- Contacts: Brass
- Shell: Steel, Tin plated
- Hardware: Brass, Nickel plated
- Plating: Gold flash over Nickel underplate overall
- Electrical:
 - Operating voltage: 250 VAC max
 - Current rating: 10, 20 or 40 Amps max. (See Chart)
 - Contact resistance: 2.7 mohms max
 - Insulation resistance: 5,000 Mohms min
 - Dielectric withstanding voltage: 1,000 VAC for 1 minute
 - Temperature Rating: Operating temperature: -55°C to +280°C
- Environmental: Lead free, RoHS compliant
- Recommended soldering temp: 235°C for 5 seconds



UNLESS OTHERWISE SPECIFIED
 ALL DIMENSIONS ARE INCHES [MM]
 TOLERANCES: EXCEPT AS NOTED
 INCHES HOLES
 .X ± .10 Ø.X ± .10
 .XX ± .020 Ø.XXX ± .015
 .XXX ± .015 Ø.XXX ± .010

APPROVALS		DATE
DRAWN	SS	6/19/06
CHECKED		
APPROVED		

ADAM TECH
 909 Rahway Avenue, Union, NJ 07083
 Phone: 908-687-5000 Fax: 908-687-5710

TITLE: D-SUB, FEMALE POWER, D3W3, RIGHT
 ANGLE, PCB 10A, 20A OR 40A

SIZE	PART NO.	REV.
X	D3W3-SLP-XX-1	-
REF:	SCALE: NTS	SHEET 1 OF 1