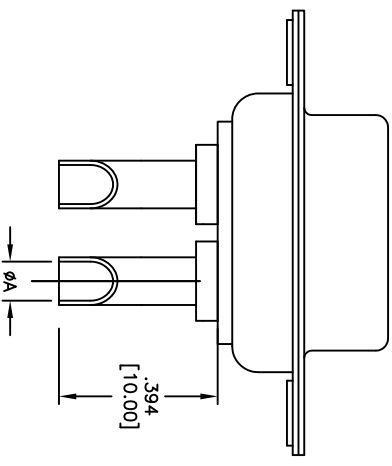
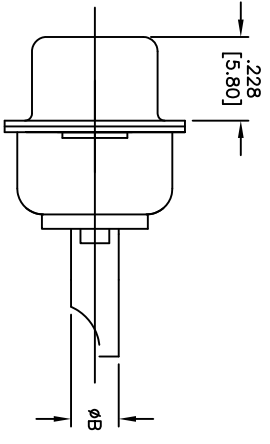
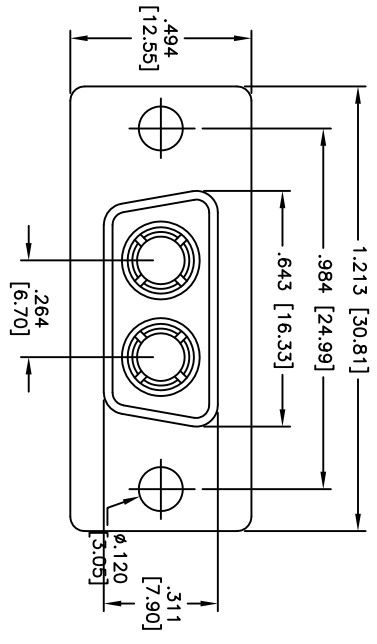


Rev	AWO #	Description	Date	Appr
-		RELEASED	4/01/10	

APPROVED: _____
 DATE: _____ TITLE: _____



ADAM TECH PART NO.	CURRENT RATING	WIRE SIZE	DIMENSION	
			A	B
D2W2-SDP-61	40 AMPS	8-10 AWG	ø.181 [4.60]	ø.216 [5.50]
D2W2-SDP-51	30 AMPS	10-12 AWG	ø.146 [3.70]	ø.181 [4.60]
D2W2-SDP-41	20 AMPS	12-14 AWG	ø.106 [2.70]	ø.141 [3.60]
D2W2-SDP-31	10 AMPS	16-18 AWG	ø.067 [1.70]	ø.098 [2.50]

SPECIFICATIONS:

- Material: Insulator: PBT, 30% glass reinforced, rated UL 94V-0
- Insulator color: Black
- Contacts: Brass
- Shell: Steel, Tin plated
- Hardware: Brass, Nickel plated
- Plating: Gold flash over Nickel underplate overall
- Electrical: Operating voltage: 250 VAC max
- Current rating: 10 – 40 Amps max (See Chart)
- Contact resistance: 10 mohms max
- Insulation resistance: 5,000 Mohms min
- Dielectric withstanding voltage: 1,000 VAC for 1 minute
- Temperature Rating: Operating temperature: -55°C to +150°C
- Environmental: Lead free, RoHS compliant



ADAM TECH

909 Rahway Avenue, Union, NJ 07083
 Phone: 908-687-5000 Fax: 908-687-5710

D-SUB POWER SOCKET, D2W2, STRAIGHT, FEMALE, SOLDER CUP

UNLESS OTHERWISE SPECIFIED ALL DIMENSIONS ARE INCHES [MM]		TOLERANCES: EXCEPT AS NOTED	
INCHES	HOLES	INCHES	HOLES
.X ± .10	ØXX ± .10	.XX ± .020	ØXXX ± .015
.XXX ± .015	ØXXX ± .010		
APPROVALS		DATE	
DRAWN	DY	4/01/10	
CHECKED			
APPROVED			
TITLE		SIZE	PART NO.
D-SUB POWER SOCKET, D2W2, STRAIGHT, FEMALE, SOLDER CUP		X	D2W2-SDP-X1
REF:		SCALE:	NTS
REV:		SHEET 1 OF 1	