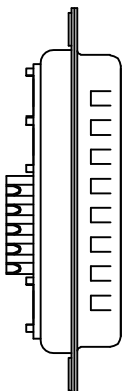
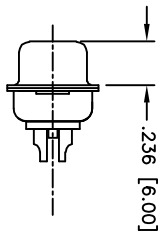
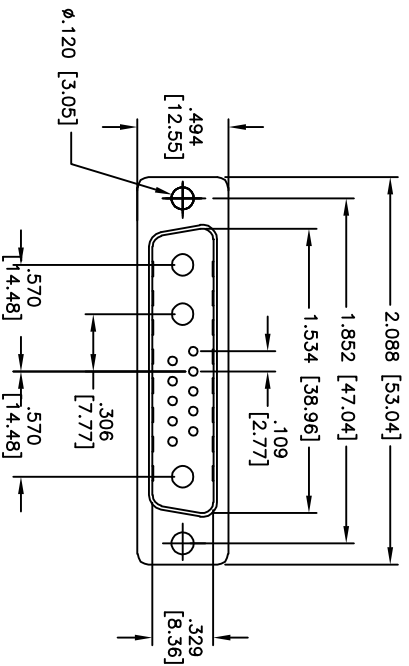


Rev	AWO #	Description	Date	Appr
-		RELEASED	12/20/10	

APPROVED: _____
 DATE: _____ TITLE: _____



SPECIFICATIONS:

- Material: Insulator: Thermoplastic, glass reinforced, rated UL 94V-0
- Insulator color: Black
- Contacts: Brass
- Shell: Steel, Tin plated
- Hardware: Brass, Nickel plated
- Plating: Gold flash over Nickel underplate overall
- Electrical: Operating voltage: 250 VAC max
- Current rating: 10 – 40 Amps max
- Contact resistance: 10 mohms max
- Insulation resistance: 5,000 Mohms min
- Dielectric withstanding voltage: 1,000 VAC for 1 minute
- Temperature Rating: Operating temperature: -55°C to +280°C
- Environmental: Lead free, RoHS compliant



ADAM TECH

909 Rahway Avenue, Union, NJ 07083
 Phone: 908-687-5000 Fax: 908-687-5710

D-SUB POWER PLUG, D13W3, STRAIGHT, FEMALE, SOLDER TYPE

UNLESS OTHERWISE SPECIFIED ALL DIMENSIONS ARE INCHES [MM] TOLERANCES: EXCEPT AS NOTED INCHES Holes ±.10 ØXX ±.015 ØXXX ±.010 XXX ±.015		DATE	
DRAWN AY		12/20/10	
CHECKED VW		12/20/10	
APPROVED			
SIZE X	PART NO. D13W3-PD-1-NCC	REF: S00019T	SCALE: NTS
TITLE: FEMALE, SOLDER TYPE		SHEET 1 OF 1	REV. -