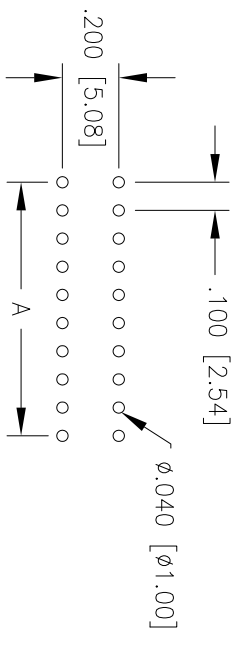
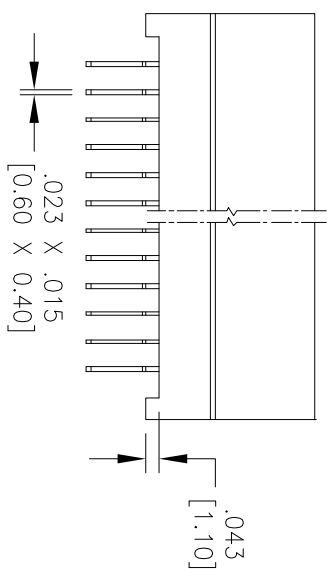
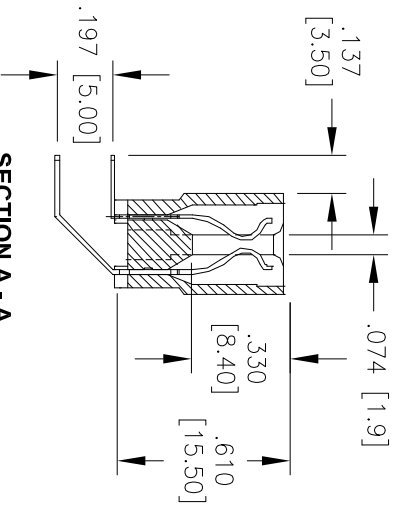
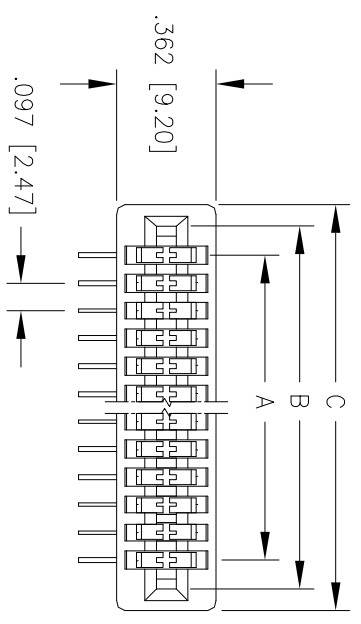


Rev	AWO #	Description	Date	Appr
-		RELEASED	9/10/08	

APPROVED: \_\_\_\_\_ TITLE: \_\_\_\_\_  
 DATE: \_\_\_\_\_



**RECOMMENDED PCB LAYOUT**

**SPECIFICATIONS:**  
**Material:** Insulator: Nylon 6T, rated UL 94V-0  
 Insulator color: Black  
 Contacts: Phosphor Bronze  
**Plating:** Gold Flash over Nickel underplate on contact area, Tin over Copper underplate on tails  
**Electrical:**  
 Operating voltage: 250 VAC max  
 Current rating: 3 Amps max  
 Contact resistance: 30 mohms max  
 Insulation resistance: 3000 Mohms min @ 500 VDC  
 Dielectric withstanding voltage: 500 VAC for 1 minute  
**Temperature Rating:**  
 Operating temperature: -40°C to +105°C  
**Environmental:**  
 Lead free, RoHS Compliant,  
 Recommended Soldering temp: 260°C for 5 sec.

Positions: 6, 8, 10, 12, 14, 16, 18, 20, 22, 24, 28, 30, 32, 34, 36, 38, 40, 42, 44, 48, 50, 60, 62, 64, 70, 72, 82, 86, 98, 100, 108  
 A = .100 [2.54] x No. of Spaces  
 B = A + .200 [5.08]  
 C = A + .360 [9.14]

UNLESS OTHERWISE SPECIFIED  
 ALL DIMENSIONS ARE INCHES [MM]  
 TOLERANCES: EXCEPT AS NOTED  
 INCHES HOLES

X	± .10	ØX	± .10
.XX	± .020	ØXX	± .015
.XXX	± .015	ØXXX	± .010

**ADAM TECH**  
 909 Rahway Avenue, Union, NJ 07083  
 Phone: 908-687-5000 Fax: 908-687-5710

TITLE: CARD EDGE CONNECTOR, RIGHT ANGLE  
 .100" PITCH, PCB

DRAWN	SS	9/10/08	SIZE	PART NO.	REV.
CHECKED			X	CERA-XX-UHT	-
APPROVED			REF:	SCALE: NTS	SHEET 1 OF 1

