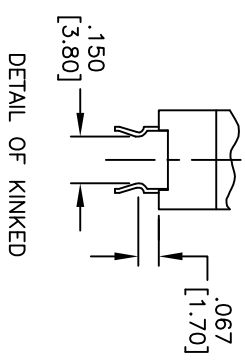
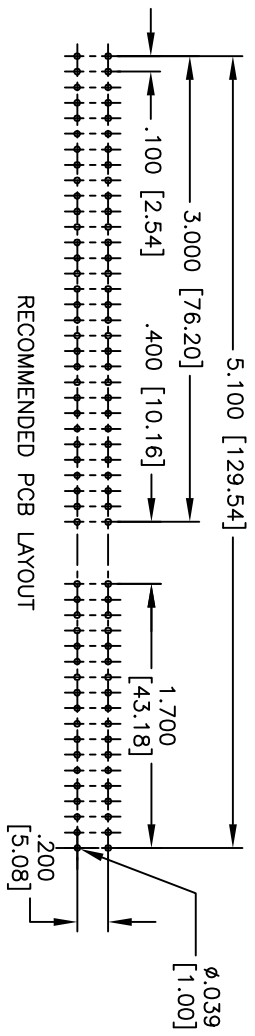
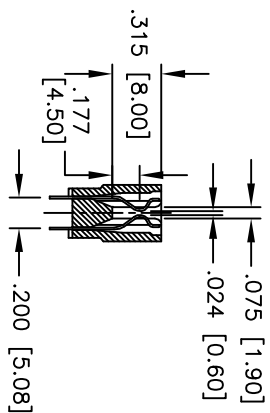
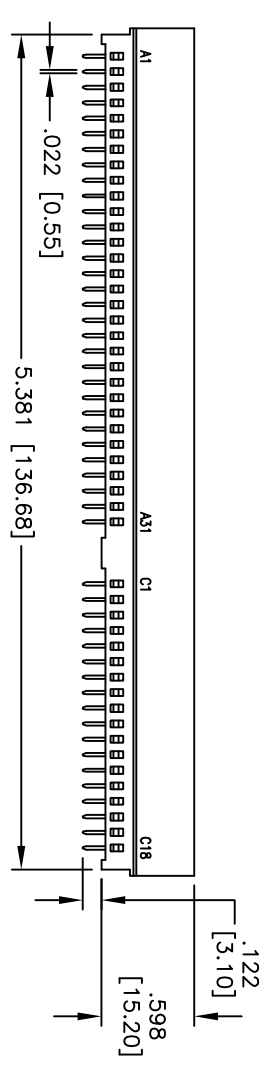
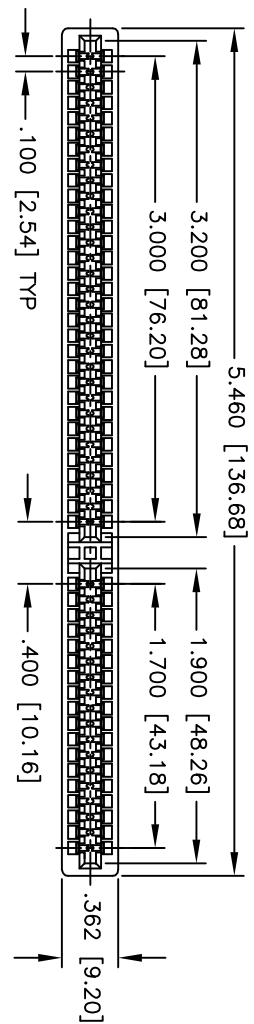


Rev	AWO #	Description	Date	Appr
-		RELEASED	6/7/10	

APPROVED: _____
 DATE: _____ TITLE: _____



*8 Pair of Kink Pins: A2,A3,A24,A25,A28,A29,C16,C17
 B2,B3,B24,B25,B28,B29,D16,D17

SPECIFICATIONS:

Material: PBT, Glass reinforced, rated UL 94V-0
 Insulator color: Black
 Contacts: Copper Alloy
 Plating: Gold flash over Nickel underplate on contact area, Tin over Copper underplate on PCB tails
 Electrical: Current rating: 3 Amps
 Contact resistance: 20 mohms max. initial
 Insulation resistance: 5,000 Mohms min.
 Dielectric withstanding voltage: 1000 VAC RMS.
 Temperature Rating: Operating temperature: -55°C to +85°C
 Environmental: Lead free, RoHS compliant
 Recommended soldering temp: 235°C for 5 seconds



ADAM TECH

909 Rahway Avenue, Union, NJ 07083
 Phone: 908-687-5000 Fax: 908-687-5710

TITLE: .100 [2.54] CARD EDGE CONNECTOR, 98 PIN
 VERTICAL, PCB TYPE

UNLESS OTHERWISE SPECIFIED ALL DIMENSIONS ARE INCHES [MM] TOLERANCES: EXCEPT AS NOTED INCHES		HOLDS	
.X	± .10	ØX	± .10
.XX	± .020	ØXX	± .015
.XXX	± .015	ØXXX	± .010
APPROVALS		DATE	
DRAWN	DY	6/17/10	
CHECKED			
APPROVED			
SIZE	PART NO.	SCALE	SHEET 1 OF 1
X	CE-XX-U-BR	NIS	
REF: S00043T			