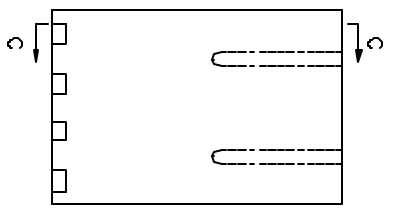
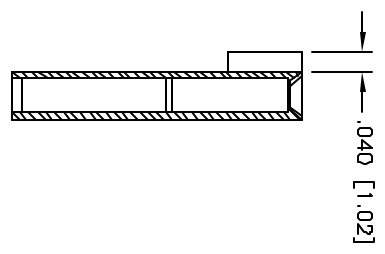
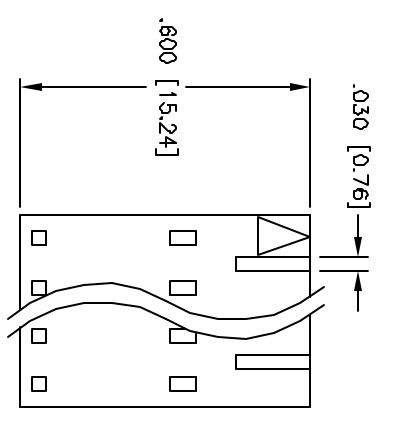
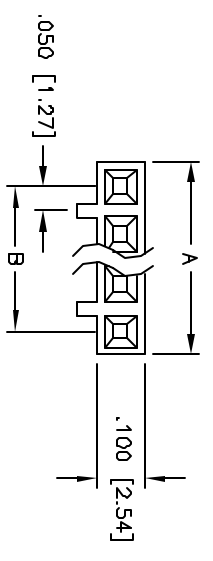


Rev	AWO #	Description	Date	Appr
-		RELEASED	4/7/05	

APPROVED: _____
 DATE: _____ TITLE: _____



Positions: 2 thru 12
 A = .100 [2.54] x No. of Positions
 B = .100 [2.54] x No. of Spaces

SPECIFICATIONS:

Material:
 Insulator: PBT, glass reinforced, rated UL 94V-0
 Insulator color: Black

Electrical:
 Operating voltage: 250 VAC max
 Insulation resistance: 1,000 Mohms min @ 500 VDC
 Dielectric withstanding voltage: 500 VAC for 1 minute

Temperature Rating:
 Operating temperature: -25°C to +85°C

Environmental:
 Lead free, RoHS compliant



UNLESS OTHERWISE SPECIFIED ALL DIMENSIONS ARE INCHES [MM] TOLERANCES: EXCEPT AS NOTED INCHES: .10 ØXX ±.10 .XX ±.020 ØXXX ±.019 .XXX ±.015 ØXXXX ±.010		TITLE .100 [2.54] LATCHING HOUSING WITHOUT LATCH	
DRAWN	SS	DATE	4/7/05
CHECKED			
APPROVED			
REF:	SIZE PART NO.	SCALE	SHEET 1 OF 1
	X CDHXX-ML	NIB	

ADAM TECH
 909 Rahway Avenue, Union, NJ 07083
 Phone: 908-687-5000 Fax: 908-687-5710