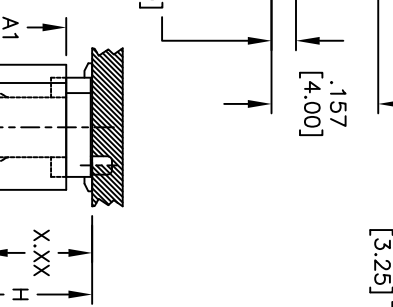
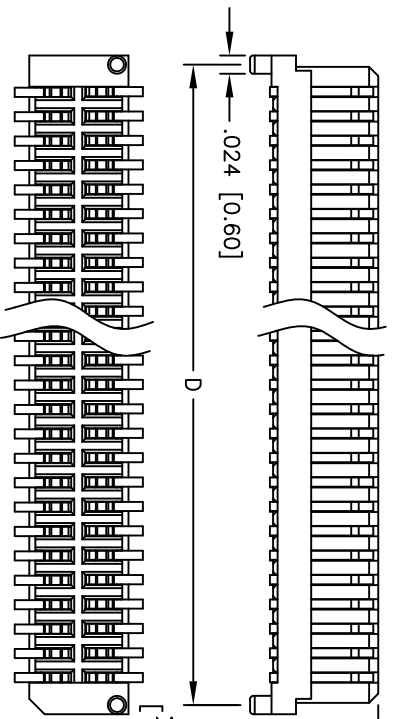
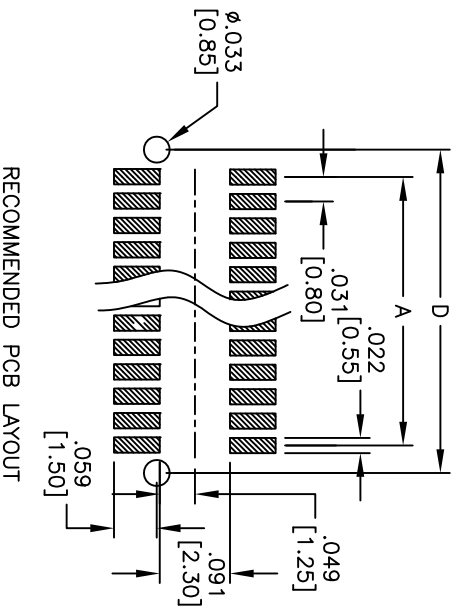
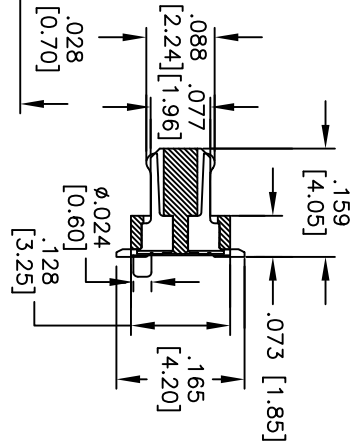
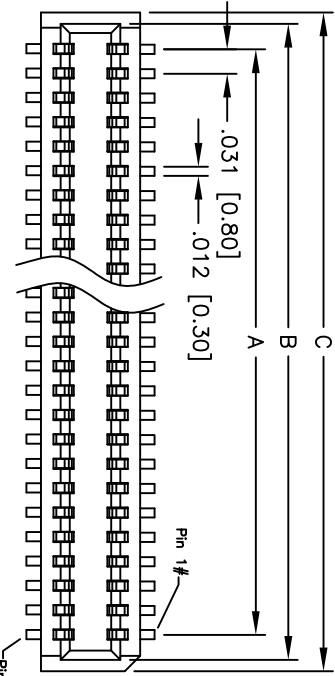


Rev	AWO #	Description	Date	Appr
-		RELEASED	11/29/10	

APPROVED: \_\_\_\_\_  
 DATE: \_\_\_\_\_ TITLE: \_\_\_\_\_



PACKAGED ON TAPE & REEL

**SPECIFICATIONS:**

Material: Nylon 46, rated UL 94V-0  
 Insulator color: White  
 Contacts: Phosphor Bronze  
 Plating: Gold flash over Nickel underplate overall

Electrical:  
 Operating voltage: 100 VAC max.  
 Current rating: 0.5 Amps max.  
 Contact resistance: 40 mohms max. initial  
 Insulation resistance: 100 Mohms min.  
 Dielectric withstanding voltage: 500 VAC for 1 minute  
 Temperature Rating: Operating temperature: -40°C to +105°C

Environmental:  
 Lead free, RoHS compliant  
 Recommended soldering temp: 260°C for 5 seconds



ADAM P/N	X.XX	Socket Height (A1)	Mating Height (H)
BB8-PN-XXX-G-3.55-T/R	.140 [3.55]	.144 [3.65]	.177 [4.50]
		.163 [4.15]	.197 [5.00]
		.203 [5.15]	.236 [6.00]
		.222 [5.65]	.256 [6.50]
		.185 [4.70]	.222 [5.65]
		.163 [4.15]	.217 [5.50]
BB8-PN-XXX-G-4.05-T/R	.159 [4.05]	.222 [5.65]	.276 [7.00]
		.185 [4.70]	.242 [6.15]

Mated with: BB8-SN-XXX-G-XXX-T/R

Positions: 10, 12, 14, 16, 18, 20, 22, 24, 26, 28, 30,  
 32, 34, 36, 38, 40, 50, 60, 68, 70, 80, 90, 100

A = .031 [0.80] x (No. of Positions per row - 1) + .065 [1.65]  
 B = .031 [0.80] x (No. of Positions per row - 1) + .094 [2.40]  
 C = .031 [0.80] x (No. of Positions per row - 1) + .071 [1.80]  
 D = .031 [0.80] x (No. of Positions per row - 1) + .071 [1.80]

**ADAM TECH**

909 Railway Avenue, Union, NJ 07083  
 Phone: 908-687-5000 Fax: 908-687-5710

0.031 [0.80] BOARD TO BOARD  
 PLUG, SMT TYPE

UNLESS OTHERWISE SPECIFIED ALL DIMENSIONS ARE INCHES [MM]		TOLERANCES: EXCEPT AS NOTED	
.X	± .10	$\phi$ X	± .10
.XX	± .020	$\phi$ XX	± .015
.XXX	± .015	$\phi$ XXX	± .010
APPROVALS		DATE	
DRAWN	AY	11/29/10	
CHECKED	JL	11/29/10	
APPROVED			
TITLE		PART NO.	
.031 [0.80] BOARD TO BOARD PLUG, SMT TYPE		BB8-PN-XXX-G-XX-T/R	
REF: S00065T		SCALE: NTS	SHEET 1 OF 1