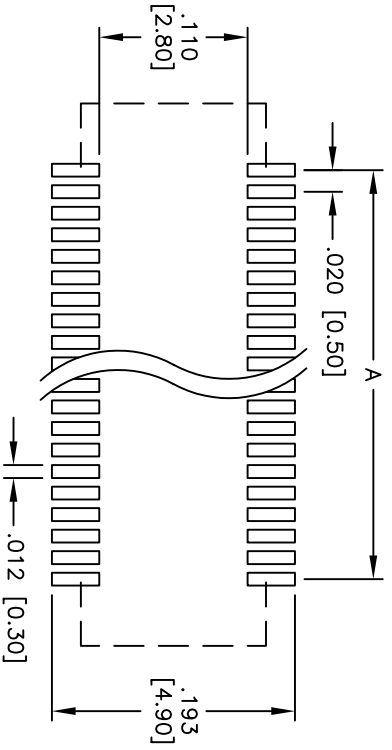
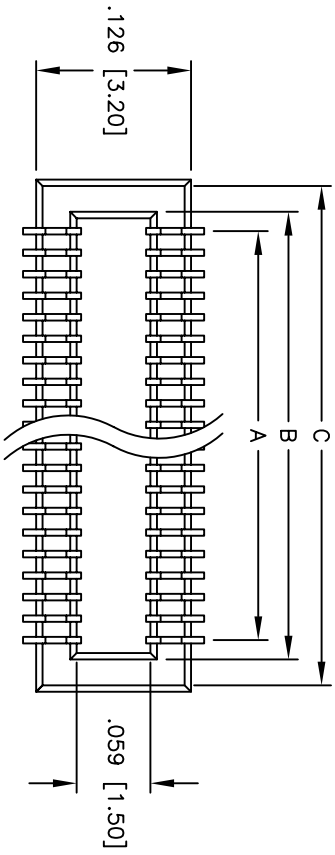
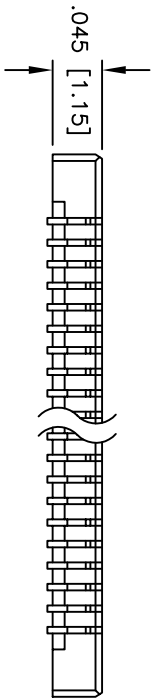
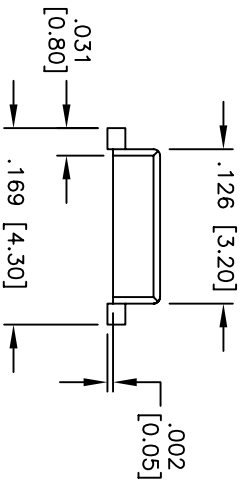


Rev	AWO #	Description	Date	Appr
-		RELEASED	5/23/05	

APPROVED: \_\_\_\_\_  
 DATE: \_\_\_\_\_ TITLE: \_\_\_\_\_



RECOMMENDED PCB LAYOUT



**SPECIFICATIONS:**

**Material:**  
 Insulator: LCP, glass reinforced, rated UL 94V-0  
 Insulator color: Natural  
 Contacts: Phosphor Bronze  
**Plating:**  
 Gold flash over Nickel underplate overall  
**Electrical:**  
 Operating voltage: 50 VAC max.  
 Current rating: 0.3 Amps max.  
 Contact resistance: 40 mohms max. initial  
 Insulation resistance: 1,000 Mohms min.  
 Dielectric withstanding voltage: 500 VAC for 1 minute  
**Temperature Rating:**  
 Operating temperature: -65°C to +155°C  
**Environmental:**  
 Lead free, RoHS compliant  
 Recommended soldering temp: 260°C for 5 seconds

**Positions:** 20, 28, 30, 40, 50, 60, 70, 80, & 90  
 A = .020 [0.50] x (No. of Contacts - 1)  
 B = .020 [0.50] x (No. of Contacts - 1) + .041 [1.05]  
 C = .020 [0.50] x (No. of Contacts - 1) + .079 [2.00]

**ADAM TECH**

909 Rahway Avenue, Union, NJ 07083  
 Phone: 908-687-5000 Fax: 908-687-5710

**.020 [0.50] BOARD TO BOARD SOCKET**  
 SURFACE MOUNT

UNLESS OTHERWISE SPECIFIED ALL DIMENSIONS ARE INCHES [MM]		TOLERANCES: EXCEPT AS NOTED	
INCHES		HOLDS	
.X	± .10	ØXX	± .10
.XX	± .020	ØXXX	± .015
.XXX	± .015	ØXXXX	± .010
APPROVALS		DATE	
DRAWN	SS	5/23/05	
CHECKED			
APPROVED			
SIZE	PART NO.	SCALE	SHEET 1 OF 1
X	BB5-S-XX	NTS	
REV.			

