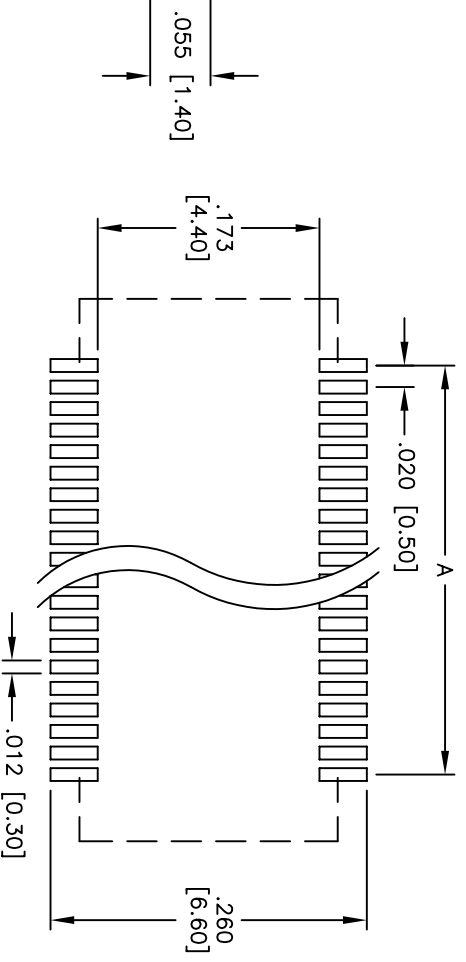
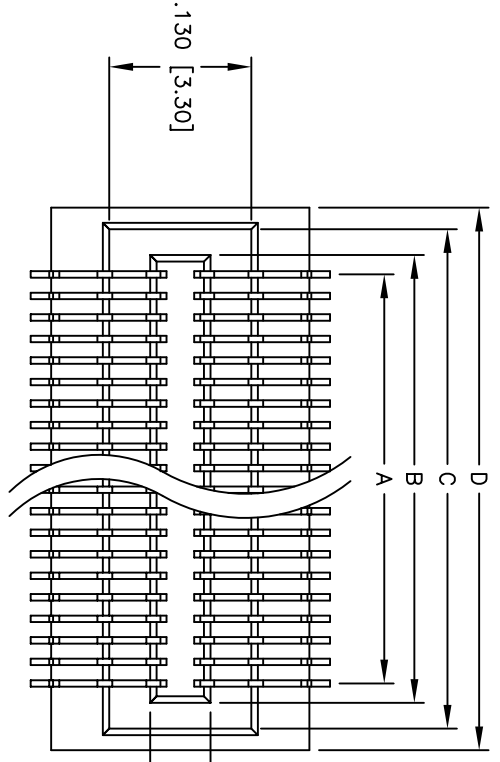


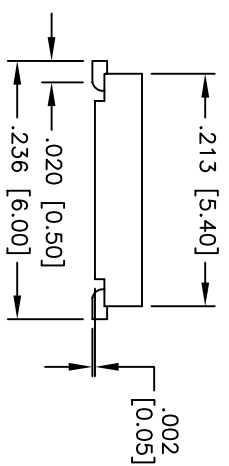
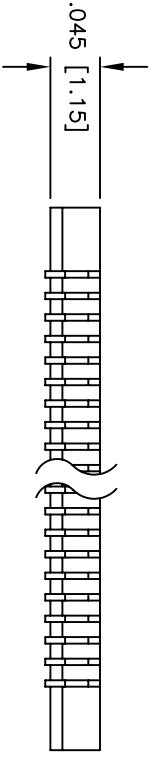
Rev	AWO #	Description	Date	Appr
-		RELEASED	5/23/05	

APPROVED: \_\_\_\_\_

DATE: \_\_\_\_\_ TITLE: \_\_\_\_\_



RECOMMENDED PCB LAYOUT



**SPECIFICATIONS:**

Material: LCP, glass reinforced, rated UL 94V-0

Insulator color: Natural

Contacts: Phosphor Bronze

Plating:

Gold flash over Nickel underplate overall

Electrical:

Operating voltage: 50 VAC max.

Current rating: 0.3 Amps max.

Contact resistance: 40 mohms max. initial

Insulation resistance: 1,000 Mohms min.

Dielectric withstanding voltage: 500 VAC for 1 minute

Temperature Rating:

Operating temperature: -65°C to +155°C

Environmental:

Lead free, RoHS compliant

Recommended soldering temp: 260°C for 5 seconds



- Positions: 20, 28, 30, 40, 50, 60, 70, 80, & 90
- A = .020 [0.50] x (No. of Contacts - 1) + .035 [0.90]
  - B = .020 [0.50] x (No. of Contacts - 1) + .083 [2.10]
  - C = .020 [0.50] x (No. of Contacts - 1) + .122 [3.10]
  - D = .020 [0.50] x (No. of Contacts - 1) + .122 [3.10]

UNLESS OTHERWISE SPECIFIED  
ALL DIMENSIONS ARE INCHES [MM]

TOLERANCES: EXCEPT AS NOTED

INCHES HOLE SIZE

.X ± .10 ØXX ± .10

.XX ± .020 ØXXX ± .015

.XXX ± .015 ØXXX ± .010

APPROVALS DATE

DRAWN SS 5/23/05

CHECKED

APPROVED

**ADAM TECH**

909 Railway Avenue, Union, NJ 07083

Phone: 908-687-5000 Fax: 908-687-5710

TITLE .020 [0.50] BOARD TO BOARD PLUG

SURFACE MOUNT

SIZE	PART NO.	REV.
X	BB5-P-XX	-
SCALE: NTS	SHEET 1 OF 1	