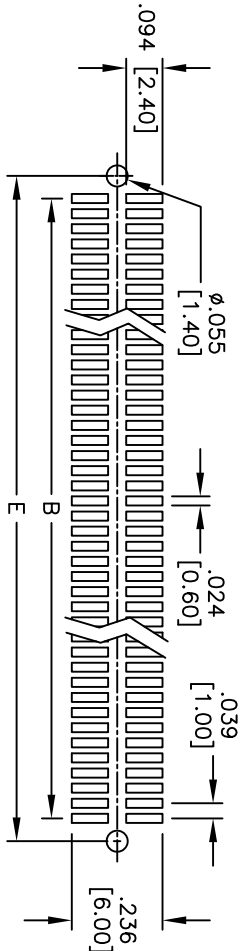
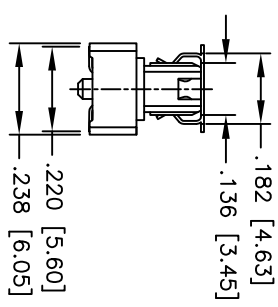
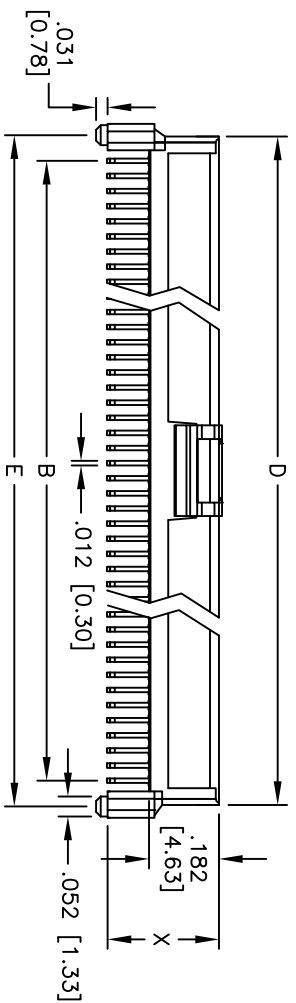
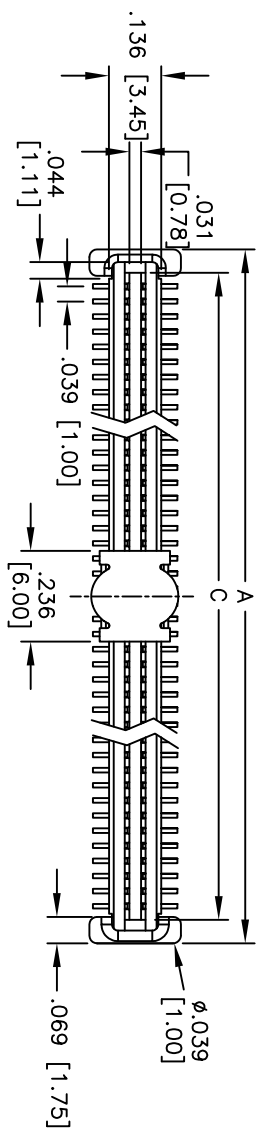


Rev	AWO #	Description	Date	Appr
-		RELEASED	6/28/10	

APPROVED: _____
 DATE: _____ TITLE: _____



RECOMMENDED PCB LAYOUT

ADAM P/N	X
BB10-SO-XXX-G-5.37-PP-T/R	.211 [5.37]
BB10-SO-XXX-G-7.37-PP-T/R	.290 [7.37]
BB10-SO-XXX-G-8.37-PP-T/R	.330 [8.37]
BB10-SO-XXX-G-10.37-PP-T/R	.408 [10.37]

PACKAGED ON TAPE & REEL

Positions: 7 thru 50 per row
 A = .039 [1.00] x (No. of Positions per row) + .154 [3.90]
 B = .039 [1.00] x (No. of Positions per row) - .039 [1.00]
 C = .039 [1.00] x (No. of Positions per row) + .031 [0.80]
 D = .039 [1.00] x (No. of Positions per row) + .087 [2.22]
 E = .039 [1.00] x (No. of Positions per row) + .094 [2.40]

ADAM TECH

909 Railway Avenue, Union, NJ 07083
 Phone: 908-687-5000 Fax: 908-687-5710

TITLE: .039 [1.00] BOARD TO BOARD SOCKET, SMT TYPE

UNLESS OTHERWISE SPECIFIED ALL DIMENSIONS ARE INCHES [MM] TOLERANCES: EXCEPT AS NOTED	INCHES .X ± .10 .XX ± .020 .XXX ± .015	HOLES ØX ± .10 ØXXX ± .015 ØXXX ± .010
DRAWN	DY	6/28/10
CHECKED		
APPROVED		
SIZE	PART NO.	REV.
X	BB10-SO-XXX-G-X.XX-PP-T/R	-
REF: S00038T	SCALE: NTS	SHEET 1 OF 1

A
 Specifications:
 Material: Hi-temp thermoplastic, rated UL 94V-0
 Insulator color: Black
 Contacts: Copper Alloy
 Pad: Metal
 Plating: Gold flash over Nickel underplate overall.
 Electrical:
 Current rating: 0.5 Amps
 Contact resistance: 40 mohms max @ DC 1mA
 Insulation resistance: 100 Mohms min @ DC 100V
 Dielectric withstanding voltage: AC 500V for 1 minute
 Operating Temperature: -25°C to +85°C
 Environmental:
 Lead free, RoHS compliant
 Recommended soldering temp: 260°C for 5 seconds

