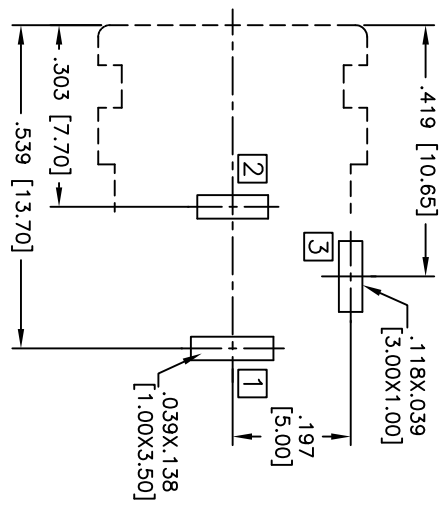
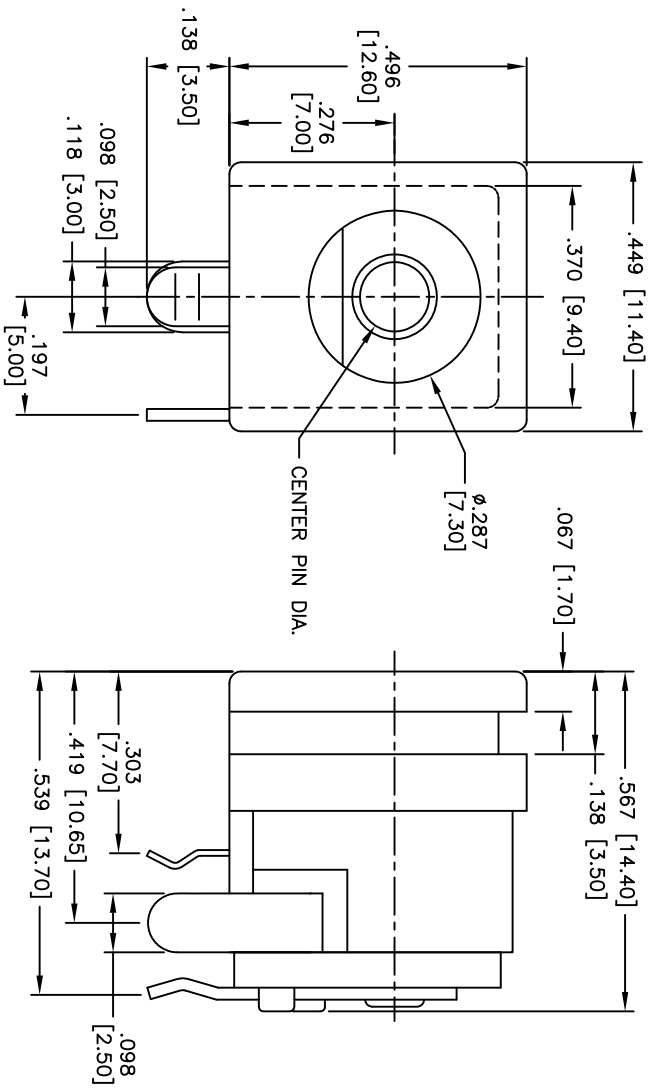


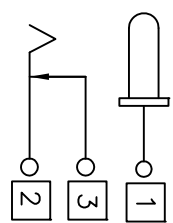
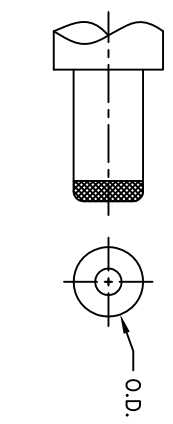
| Rev | AWO # | Description | Date     | Appr |
|-----|-------|-------------|----------|------|
| -   | 10652 | RELEASED    | 10/27/10 |      |

APPROVED: \_\_\_\_\_  
 DATE: \_\_\_\_\_ TITLE: \_\_\_\_\_



RECOMMENDED PCB LAYOUT  
(COPPER-SIDED VIEW)

| PART NO.   | CENTER PIN DIA. | DC PLUG O.D. |
|------------|-----------------|--------------|
| ADC-033-1  | φ.079 [2.00]    | φ.217 [5.50] |
| ADC-033-2  | φ.098 [2.50]    | φ.217 [5.50] |
| ADC-033-10 | φ.118 [3.00]    | φ.258 [6.55] |



| PART NO.   | CENTER PIN DIA. | DC PLUG O.D. |
|------------|-----------------|--------------|
| ADC-033-1  | φ.079 [2.00]    | φ.217 [5.50] |
| ADC-033-2  | φ.098 [2.50]    | φ.217 [5.50] |
| ADC-033-10 | φ.118 [3.00]    | φ.258 [6.55] |

SPECIFICATIONS:

Material: Insulator: PBT, Glass reinforced, rated UL 94V-0  
 Insulator color: Black  
 Center Pin: Brass, Nickel plated  
 Contacts: Brass

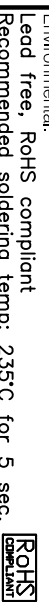
Plating: Tin over Copper underplate

Electrical: Operating voltage: 18 VDC max.

Current rating: 2.5 Amps max  
 Contact resistance: 50 mohms max. initial  
 Insulation resistance: 100 Mohms min.

Dielectric withstanding voltage: 500 VAC for 1 minute  
 Temperature Rating: Operating temperature: -25°C to +70°C

Environmental: Lead free, RoHS compliant  
 Recommended soldering temp: 235°C for 5 sec.



6 5 4 3 2 1

# ADAM TECH

909 Rahway Avenue, Union, NJ 07083  
 Phone: 908-687-5000 Fax: 908-687-5710

TITLE: DC POWER JACK, 2.00mm, 2.50mm, 3mm CENTER PIN

| UNLESS OTHERWISE SPECIFIED<br>ALL DIMENSIONS ARE INCHES [MM] | TOLERANCES: EXCEPT AS NOTED | INCHES | HOLES | DATE |
|--------------------------------------------------------------|-----------------------------|--------|-------|------|
| .X                                                           | ±.10                        | ØXX    | ±.10  |      |
| .XX                                                          | ±.020                       | ØXXX   | ±.015 |      |
| .XXX                                                         | ±.015                       | ØXXXX  | ±.010 |      |

|          |    |          |
|----------|----|----------|
| DRAWN    | DY | 10/27/10 |
| CHECKED  |    |          |
| APPROVED |    |          |

|      |           |              |
|------|-----------|--------------|
| SIZE | PART NO.  | REV.         |
| X    | ADC-033-X | -            |
| REF: | S0002C    | SCALE: NTS   |
|      |           | SHEET 1 OF 1 |