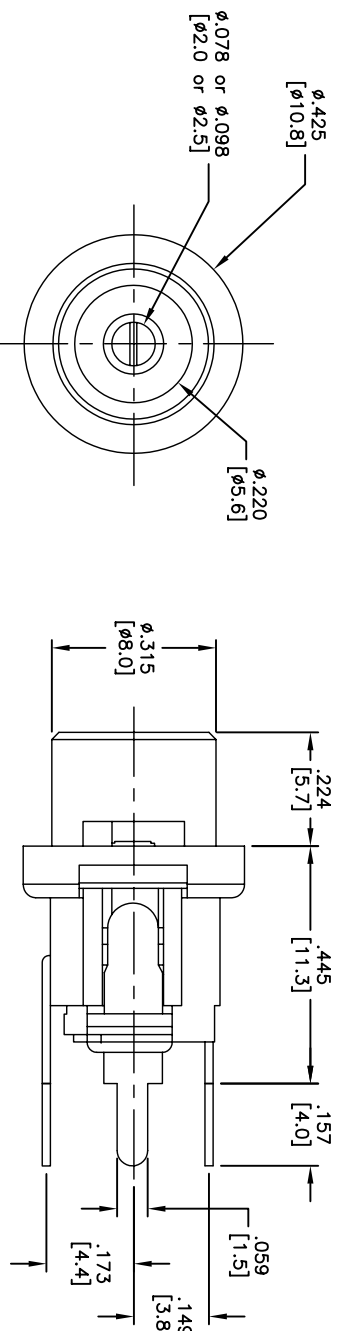
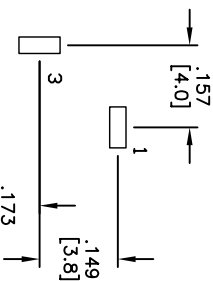


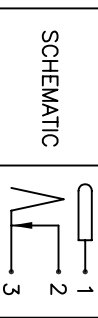
| Rev | AWO # | Description | Date     | Appr |
|-----|-------|-------------|----------|------|
| -   |       | RELEASED    | 11/28/05 |      |

APPROVED: \_\_\_\_\_  
 DATE: \_\_\_\_\_ TITLE: \_\_\_\_\_



RECOMMENDED  
PCB LAYOUT

| PART NO.     | CENTER PIN DIA. |
|--------------|-----------------|
| ADC-027-1-PC | 2.0mm           |
| ADC-027-2-PC | 2.5mm           |



**SPECIFICATIONS:**  
 Material: Insulator: PBT, Glass reinforced, rated UL 94V-0  
 Insulator color: Black  
 Center Pin: Brass, Nickel plated  
 Contacts: Copper Alloy, Nickel plated  
 Electrical:  
 Operating voltage: 12 VDC max.  
 Current rating: 5 Amp max.  
 Contact resistance: 30 mohms max. initial  
 Insulation resistance: 100 Mohms min.  
 Dielectric withstanding voltage: 500 VAC for 1 minute  
 Temperature Rating: Operating temperature: -25°C to +70°C  
 Environmental:  
 Lead free, RoHS compliant.  
 Recommended soldering temp: 235 for 5 sec.



# ADAM TECH

909 Rahway Avenue, Union, NJ 07083  
 Phone: 908-687-5000 Fax: 908-687-5710

TITLE: DC POWER JACK, VERTICAL, PANEL MOUNT

|   |        |          |        |
|---|--------|----------|--------|
| UNLESS OTHERWISE SPECIFIED<br>ALL DIMENSIONS ARE INCHES [MM]<br>TOLERANCES: EXCEPT AS NOTED<br>INCHES |        | Holes    |        |
| .X  | ± .10  | ØX       | ± .10  |
| .XX   | ± .020 | ØXXX     | ± .015 |
| .XXX  | ± .015 | ØXXX     | ± .010 |
| APPROVALS   |        | DATE     |        |
| DRAWN   | SS     | 11/28/05 |        |
| CHECKED   |        |          |        |
| APPROVED  |        |          |        |

|      |              |              |
|------|--------------|--------------|
| SIZE | PART NO.     | REV.         |
| X    | ADC-027-X-PC | -            |
| REF: | SCALE: NTS   | SHEET 1 OF 1 |