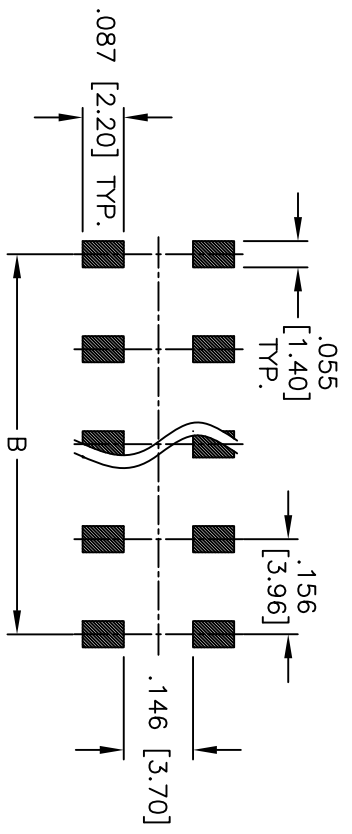
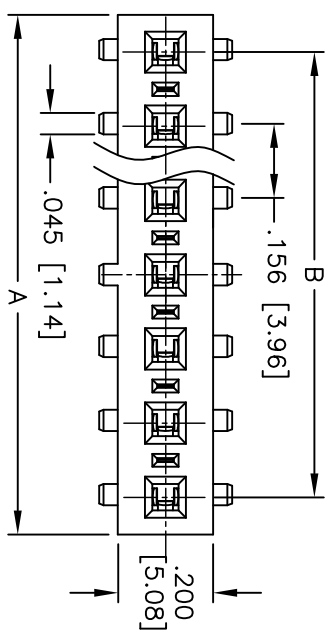
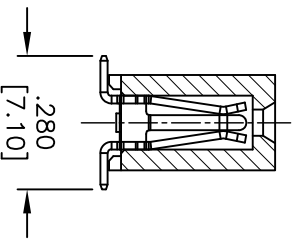
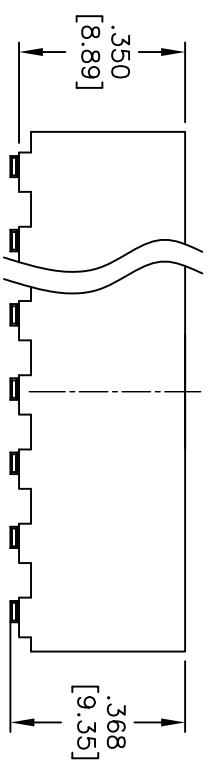


Rev	AWO #	Description	Date	Appr
-		RELEASED	12/17/10	

APPROVED: _____
 DATE: _____ TITLE: _____



RECOMMENDED PCB LAYOUT



SPECIFICATIONS:

Material: Insulator: LCP, glass reinforced, rated UL 94V-0
 Insulator color: Black
 Contacts: Phosphor Bronze
 Plating: Matt Tin over Nickel underplate overall

Electrical: Current rating: 7.90 Amps max
 Contact resistance: 30 mohms max
 Insulation resistance: 1,000 Mohms min
 Dielectric withstanding voltage: 1000 VAC for 1 minute
 Temperature Rating: Operating temperature: -40°C to +105°C

Environmental: Lead free, RoHS compliant
 Recommended soldering temp: 260°C for 5 seconds



A = .156 [3.96] x No. of Positions
 B = .156 [3.96] x No. of Spaces

UNLESS OTHERWISE SPECIFIED	
ALL DIMENSIONS ARE INCHES [MM]	
TOLERANCES: EXCEPT AS NOTED	
X .XX ± .10	ØX ± .10
.XX ± .020	ØXX ± .015
XXX ± .015	ØXXX ± .010
APPROVALS	DATE
DRAWN AY	12/17/10
CHECKED AW	12/17/10
APPROVED	

ADAM TECH

909 Rahway Avenue, Union, NJ 07083
 Phone: 908-687-5000 Fax: 908-687-5710

TITLE: .156 [3.96] SINGLE ROW RECEPTACLE STRIP
 SMT TYPE, MATT TIN PLATED

SIZE	PART NO.	REV.
X	396RS1-XX-MT-SMT	-
REF: S00032T	SCALE: NTS	SHEET 1 OF 1