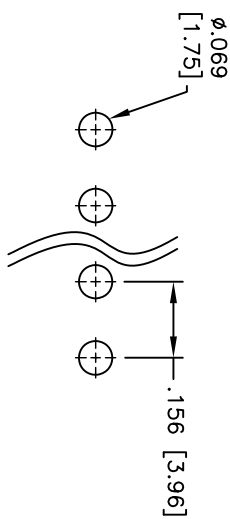
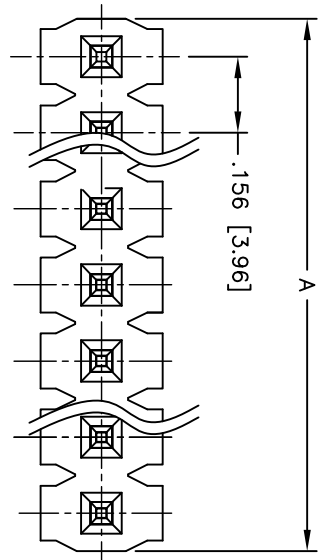
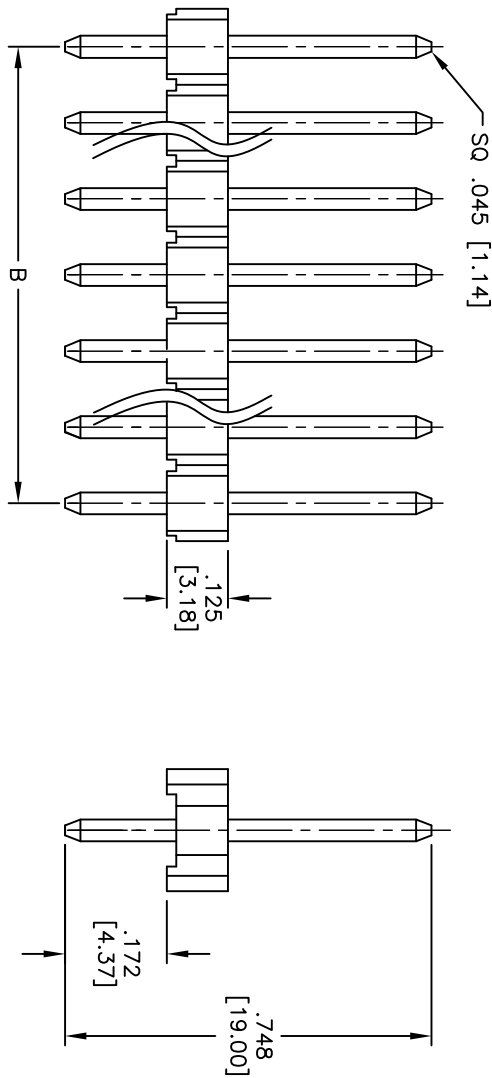


Rev	AWO #	Description	Date	Appr
-		RELEASED	1/13/11	

APPROVED: _____
 DATE: _____ TITLE: _____



Recommended P.C.B Layout



Positions: 02 thru 20
 A = .156 [3.96] x No. of Positions
 B = .156 [3.96] x No. of Spaces

SPECIFICATIONS:

Material: LCP, glass reinforced, rated UL 94V-0

Insulator color: Black

Contacts: Brass

Plating:

15u" Gold flash over Nickel underplate on contact area,
 Tin over copper underplate on tails.

Electrical:

Current rating: 7.90 Amps max

Contact resistance: 20 mohms max

Insulation resistance: 1,000 Mohms min

Dielectric withstanding voltage: 1000 VAC for 1 minute

Temperature Rating:

Operating temperature: -40°C to +105°C

Environmental:

Lead free, RoHS compliant

Recommended soldering temp: 260°C for 5 seconds



ADAM TECH

909 Railway Avenue, Union, NJ 07083
 Phone: 908-687-5000 Fax: 908-687-5710

TITLE: .156 [3.96] SINGLE ROW PIN HEADER
 15u" SELECTIVE GOLD PLATED

UNLESS OTHERWISE SPECIFIED ALL DIMENSIONS ARE IN INCHES [MM]		TOLERANCES: EXCEPT AS NOTED	
INCHES		HOLE SIZE	
.X	± .10	Ø.X	± .10
.XX	± .020	Ø.XX	± .015
.XXX	± .015	Ø.XXX	± .010
APPROVALS		DATE	
DRAWN	AY	1/13/11	
CHECKED	JL	1/13/11	
APPROVED			
SIZE	PART NO.	REV.	
X	396PH1-XX-SG-.172L748-15	-	
REF:	S00059T	SCALE:	NTS
		SHEET	1 OF 1