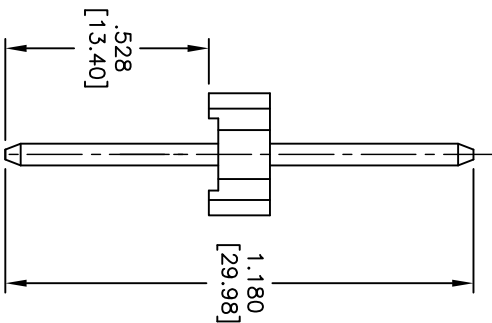
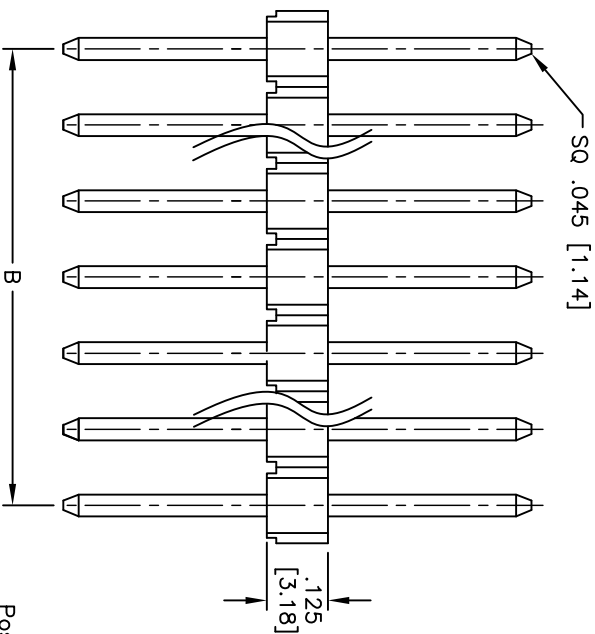
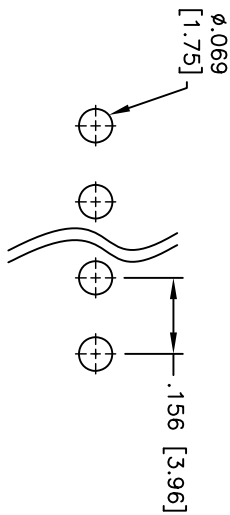
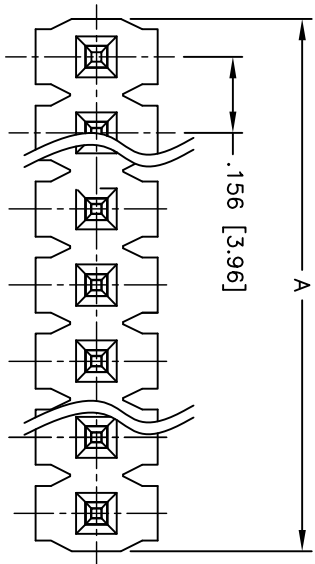


APPROVED: _____
 DATE: _____ TITLE: _____

Rev	AWO #	Description	Date	Appr
-		RELEASED	12/17/10	
A		REVISED DIM.	1/13/11	



Positions: 02 thru 20
 A = .156 [3.96] x No. of Positions
 B = .156 [3.96] x No. of Spaces

SPECIFICATIONS:
 Material: LCP, glass reinforced, rated UL 94V-0
 Insulator color: Black
 Contacts: Brass
 Plating: Matt Tin over Nickel underplate overall
 Current rating: 7.90 Amps max
 Contact resistance: 20 mohms max
 Insulation resistance: 1,000 Mohms min
 Dielectric withstanding voltage: 1000 VAC for 1 minute
 Temperature Rating: Operating temperature: -40°C to +105°C
 Environmental: Lead free, RoHS compliant
 Recommended soldering temp: 260°C for 5 seconds



ADAM TECH

909 Rahway Avenue, Union, NJ 07083
 Phone: 908-687-5000 Fax: 908-687-5710

TITLE: .156 [3.96] SINGLE ROW PIN HEADER
 MATT TIN PLATED

UNLESS OTHERWISE SPECIFIED ALL DIMENSIONS ARE INCHES [MM]	
TOLERANCES: EXCEPT AS NOTED	
INCHES	HOLDS
.X ± .10	ØX ± .10
.XX ± .020	ØXX ± .015
.XXX ± .015	ØXXX ± .010
APPROVALS	DATE
DRAWN AY	12/17/10
CHECKED AW	12/17/10
APPROVED	

SIZE	PART NO.	REV.
X	396PH1-XX-MT-.528/1.180	A
REF:	S00032T	
SCALE:	NIS	
SHEET	1 OF 1	