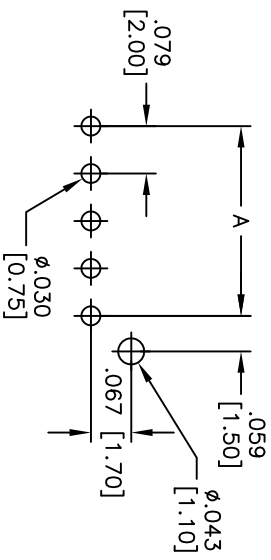
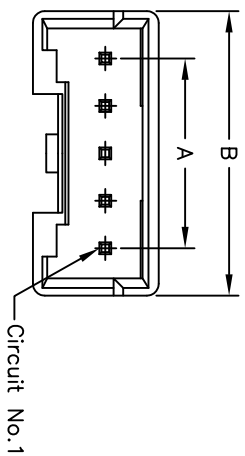


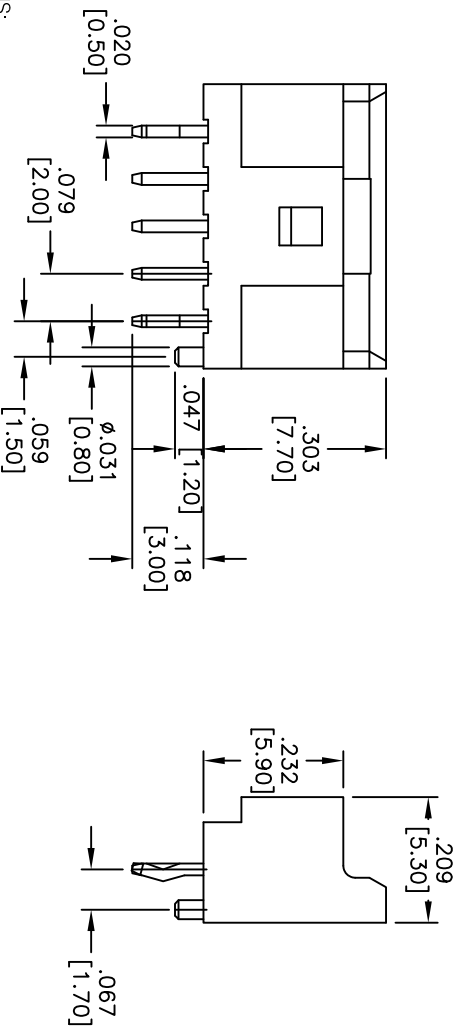
Rev	AWO #	Description	Date	Appr
-		RELEASED	2/02/10	

APPROVED: \_\_\_\_\_ TITLE: \_\_\_\_\_  
 DATE: \_\_\_\_\_



RECOMMENDED PCB LAYOUT

Poles	Dimensions	
	A	B
2	.079 [2.00]	.236 [6.00]
3	.157 [4.00]	.315 [8.00]
4	.236 [6.00]	.394 [10.00]
5	.315 [8.00]	.472 [12.00]
6	.394 [10.00]	.551 [14.00]
7	.472 [12.00]	.630 [16.00]
8	.551 [14.00]	.709 [18.00]
9	.630 [16.00]	.787 [20.00]



**SPECIFICATIONS:**

Material: PBT, glass reinforced, rated UL 94V-0  
 Insulator color: White  
 Contacts: Brass  
 Plating: Tin over Copper underplate overall

**Electrical:**

Operating voltage: 250 AC/DC  
 Current rating: 3A AC/DC max  
 Contact resistance: 20 mohms max  
 Insulation resistance: 1000 Mohms min  
 Dielectric withstanding voltage: 800 VAC for 1 minute  
 Temperature Rating: -25°C to +85°C  
 Operating temperature: -25°C to +85°C



Lead free, RoHS compliant  
 Recommended soldering temp: 235°C for 5 seconds

UNLESS OTHERWISE SPECIFIED  
 ALL DIMENSIONS ARE INCHES [MM]  
 TOLERANCES: EXCEPT AS NOTED  
 INCHES Holes ±.10  
 .XX ±.020 ØXX ±.015  
 .XXX ±.015 ØXXX ±.010

**ADAM TECH**  
 909 Rahway Avenue, Union, NJ 07083  
 Phone: 908-687-5000 Fax: 908-687-5710

DRAWN	DY	2/02/10
CHECKED		
APPROVED		

SIZE	PART NO.	REV.
X	2SHH-XX-TS-V0	-
REF: S00015T	SCALE: NTS	SHEET 1 OF 1