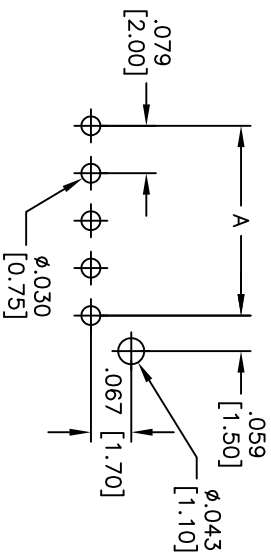
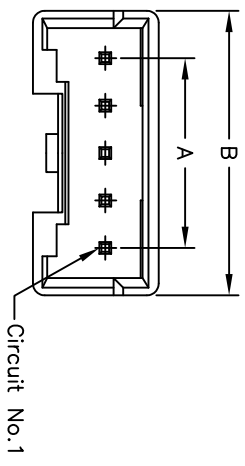


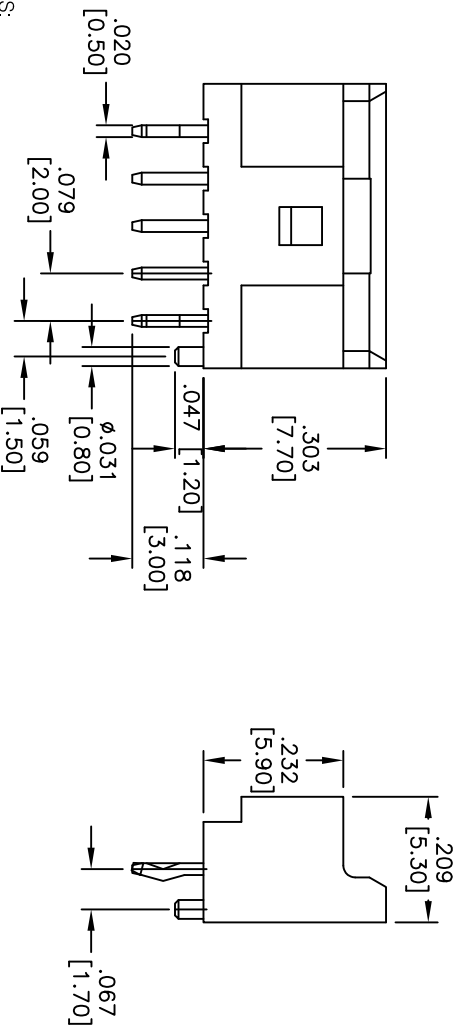
Rev	AWO #	Description	Date	Appr
-		RELEASED	2/02/10	

APPROVED: _____ TITLE: _____
 DATE: _____



RECOMMENDED PCB LAYOUT

Poles	Dimensions	
	A	B
2	.079 [2.00]	.236 [6.00]
3	.157 [4.00]	.315 [8.00]
4	.236 [6.00]	.394 [10.00]
5	.315 [8.00]	.472 [12.00]
6	.394 [10.00]	.551 [14.00]
7	.472 [12.00]	.630 [16.00]
8	.551 [14.00]	.709 [18.00]
9	.630 [16.00]	.787 [20.00]



SPECIFICATIONS:

Material: PBT, glass reinforced, rated UL 94V-0
 Insulator color: White
 Contacts: Brass
 Plating: Gold flash over Nickel underplate overall

Electrical:
 Operating voltage: 250 AC/DC
 Current rating: 3A AC/DC max
 Contact resistance: 20 mohms max
 Insulation resistance: 1000 Mohms min
 Dielectric withstanding voltage: 800 VAC for 1 minute

Temperature Rating:
 Operating temperature: -25°C to +85°C
 Environmental:
 Lead free, RoHS compliant
 Recommended soldering temp: 235°C for 5 seconds



UNLESS OTHERWISE SPECIFIED
 ALL DIMENSIONS ARE INCHES [MM]
 TOLERANCES: EXCEPT AS NOTED

INCHES	HOLES
.X ± .10	ØX ± .10
.XX ± .020	ØXX ± .015
.XXX ± .015	ØXXX ± .010

APPROVALS: _____ DATE: _____

DRAWN: DY 2/02/10
 CHECKED: _____
 APPROVED: _____

ADAM TECH
 909 Rahway Avenue, Union, NJ 07083
 Phone: 908-687-5000 Fax: 908-687-5710

TITLE: .079 [2.00] SHRROUDED HEADER
 STRAIGHT, PCB

SIZE	PART NO.	REV.
X	2SHH+XX-GS-V0	-
REF: S00015T	SCALE: NTS	SHEET 1 OF 1