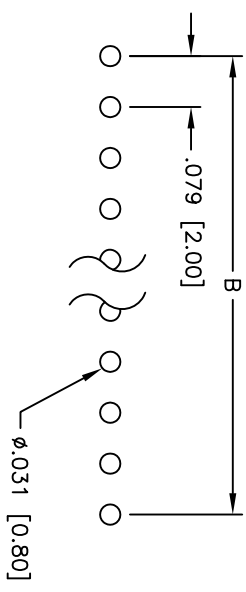
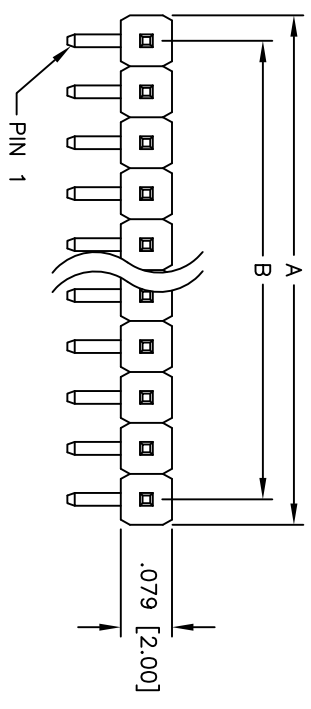
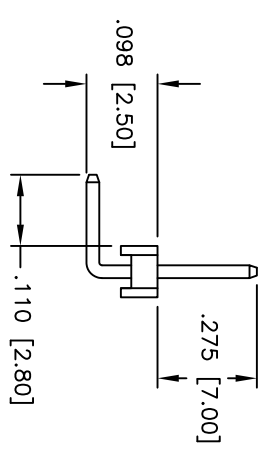
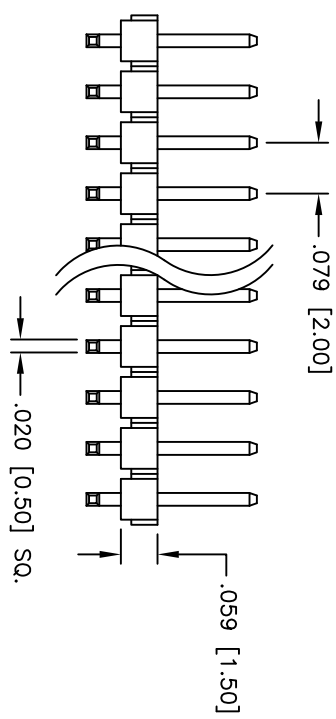


Rev	AWO #	Description	Date	Appr
-	11393	RELEASED	6/02/11	

APPROVED: _____
 DATE: _____ TITLE: _____



RECOMMENDED
PCB LAYOUT



SPECIFICATIONS:

Material: Insulator: PBT, rated UL 94V-0
 Insulator color: Black
 Contacts: Brass

Plating: Tin over Copper underplate overall

Electrical: Current rating: 1 Amp max

Insulation resistance: 20 mohms max

Dielectric withstanding voltage: 500 VAC for 1 minute

Temperature Rating: Operating temperature: -55°C to +105°C

Environmental: Lead free, RoHS compliant

Recommended soldering temp: 235°C for 5 seconds



Positions: 1 thru 40
 A = .079 [2.00] x No. of Positions
 B = .079 [2.00] x No. of Spaces

UNLESS OTHERWISE SPECIFIED ALL DIMENSIONS ARE INCHES [MM]			
.X	± .10	ØX	± .10
.XX	± .020	ØXX	± .015
.XXX	± .015	ØXXX	± .010
APPROVALS		DATE	
DRAWN	DY	6/02/11	
CHECKED			
APPROVED			

ADAM TECH

909 Rahway Avenue, Union, NJ 07083
 Phone: 908-687-5000 Fax: 908-687-5710

TITLE: .079 [2.00] SINGLE ROW PIN HEADER
 RIGHT ANGLE, TIN PLATED

SIZE	PART NO.	REV.
X	2PH1R-XX-T-.275/.110/.098	-
REF:	S00039T	
SCALE:	NTS	
SHEET	1 OF 1	