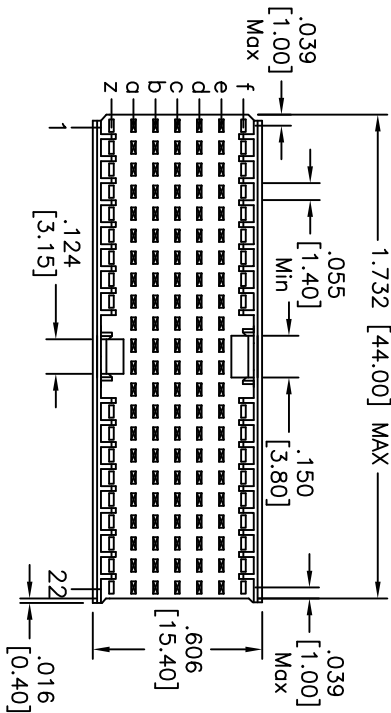
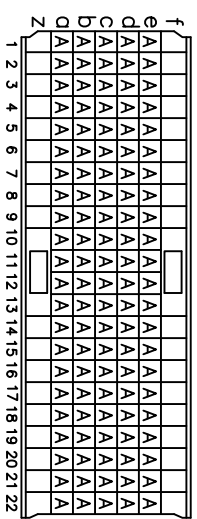
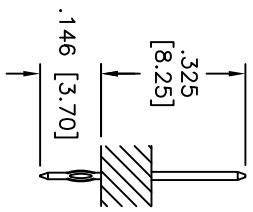
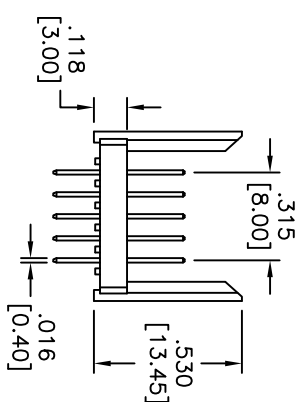
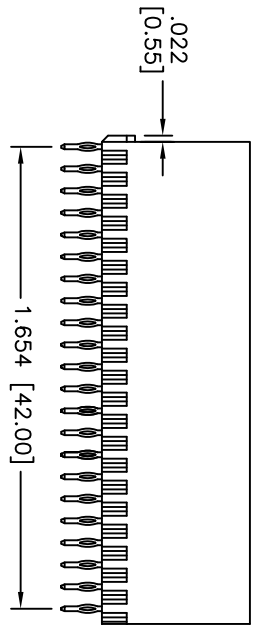
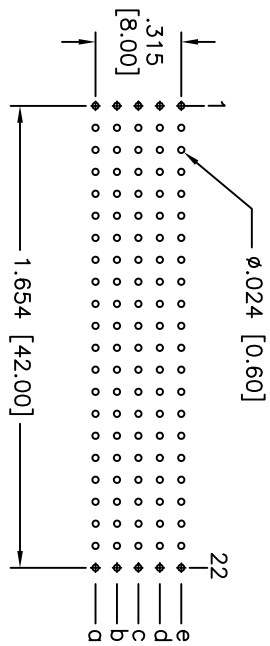


Rev	AWO #	Description	Date	Appr
-		RELEASED	9/13/10	

APPROVED: _____
 DATE: _____ TITLE: _____



Recommended PCB Layout
(Top View)



Contact Layout

SPECIFICATIONS:

- Material: Insulator: PBT, glass reinforced, rated UL 94V-0
- Insulator color: Beige
- Contacts: Phosphor Bronze
- Plating: 10u" Gold over Nickel underplate on contact area, Tin over Copper underplate on PCB tails
- Electrical: Contact resistance: 20 mohms max
- Insulation resistance: 100 Mohms min @ 500 VDC
- Temperature Rating: Operating temperature: -55°C to +125°C
- Environmental: Lead free, RoHS compliant.
- Recommended soldering temp: 235°C for 5 sec.



ADAM TECH

909 Railway Avenue, Union, NJ 07083
 Phone: 908-687-5000 Fax: 908-687-5710

079 [2.00] HARD METRIC CONNECTOR,
 MALE, AB TYPE

UNLESS OTHERWISE SPECIFIED ALL DIMENSIONS ARE IN INCHES [MM]	
TOLERANCES: EXCEPT AS NOTED	
INCHES	HOLDS
.X ± .10	ØX ± .10
.XX ± .020	ØXX ± .015
.XXX ± .015	ØXXX ± .010
APPROVALS	DATE
DRAWN	DY
CHECKED	9/13/10
APPROVED	

SIZE	PART NO.	REV.
X	2PCI-AB22-M-110-NP-B	
REF: S00068T	SCALE: NTS	SHEET 1 OF 1