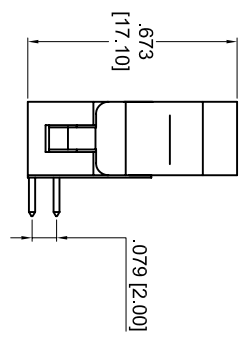
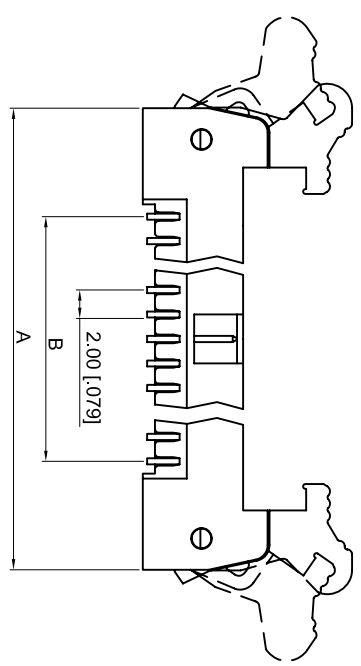
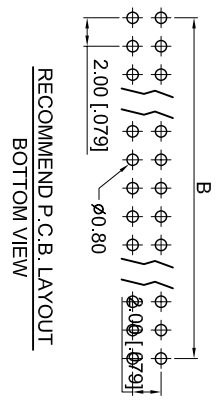
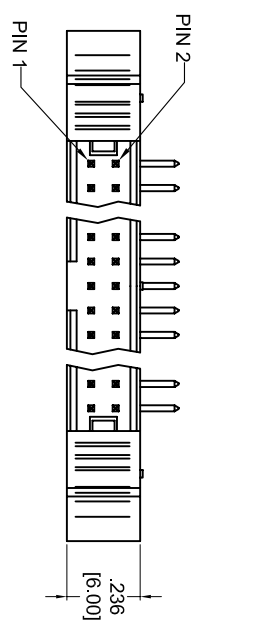


| Rev | AWO # | Description | Date | Appr |
|-----|-------|-------------|----------|------|
| - | | RELEASED | 01/26/06 | |

APPROVED: _____
 DATE: _____ TITLE: _____



| Number Of Position | DIMENSIONS | |
|--------------------|--------------|--------------|
| | A | B |
| 10 | 25.70[1.012] | 8.00[0.315] |
| 12 | 27.70[1.091] | 10.00[0.394] |
| 14 | 29.70[1.169] | 12.00[0.472] |
| 16 | 31.70[1.248] | 14.00[0.551] |
| 20 | 35.70[1.406] | 18.00[0.709] |
| 22 | 37.70[1.485] | 20.00[0.787] |
| 24 | 39.70[1.563] | 22.00[0.866] |
| 26 | 41.70[1.642] | 24.00[0.945] |
| 30 | 45.70[1.799] | 28.00[1.102] |
| 32 | 47.70[1.878] | 30.00[1.181] |
| 34 | 49.70[1.957] | 32.00[1.260] |
| 40 | 55.70[2.193] | 38.00[1.496] |
| 44 | 59.70[2.350] | 42.00[1.654] |
| 50 | 65.70[2.587] | 48.00[1.890] |
| 68 | 83.70[3.295] | 66.00[2.598] |

SPECIFICATIONS:

Material: Insulator: PBT, glass reinforced, rated UL 94V-0
 Insulator color: Black
 Contacts: Copper Alloy
 Plating: Gold Flash over Nickel underplate overall
 Electrical: Operating voltage: 250 VAC max
 Current rating: 1 Amps max
 Insulation resistance: 1000 Mohms min @ 500 VDC
 Dielectric withstanding voltage: 500 VAC for 1 minute
 Temperature Rating: Operating temperature: -40C to +85C
 Environmental: Lead free, RoHS compliant.
 Recommended soldering temp: 235 for 5 sec.

| | |
|---|-------------|
| UNLESS OTHERWISE SPECIFIED ALL DIMENSIONS ARE MM [INCHES] TOLERANCES: EXCEPT AS NOTED | |
| .X INCHES | ±.10 Holes |
| .XX INCHES | ±.020 |
| .XXX INCHES | ±.015 |
| APPROVALS | DATE |
| DRAWN | SS 01/26/06 |
| CHECKED | |
| APPROVED | |

ADAM TECH
 909 Rahway Avenue, Union, NJ 07083
 Phone: 908-687-5000 Fax: 908-687-5710

TITLE: 2MM LATCHING BOX HEADER, RIGHT
 ANGLE, PCB, GOLD PLATED

SIZE: X PART NO.: 2MHR-XX-HUA-S
 SCALE: NTS SHEET 1 OF 1