

6

5

4

3

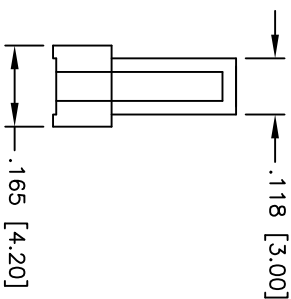
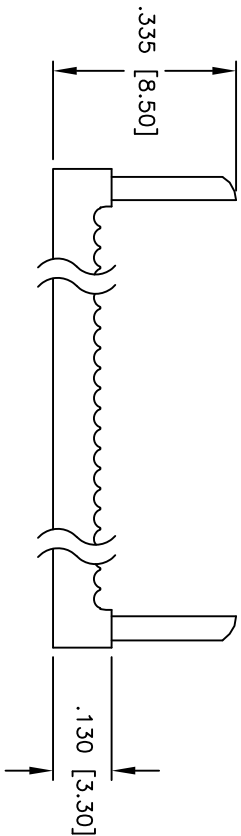
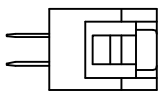
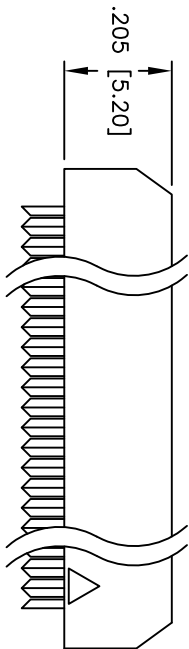
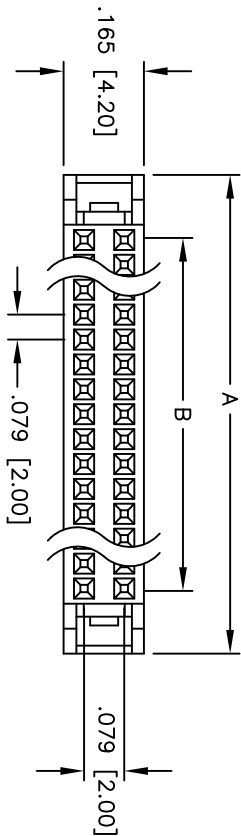
2

1

APPROVED: _____

DATE: _____ TITLE: _____

Rev	AWO #	Description	Date	Appr
-	7440	RELEASED	02/27/07	
A		REVISED SHAPE	11/10/09	



SPECIFICATIONS:

Material:

Insulator: PBT, glass reinforced, rated UL 94V-0

Insulator color: Black

Contacts: Phosphor Bronze

Plating:

Gold flash over Nickel on contact area, Tin over copper underplate on IDC area.

Electrical:

Operating voltage: 250 VAC max.

Current rating: 1 Amp max.

Contact resistance: 30 mohms max. initial

Insulation resistance: 3,000 Mohms min.

Dielectric withstanding voltage: 500 VAC for 1 minute

Mechanical:

Recommended wire size: 30-28 AWG stranded

Temperature Rating: Operating temperature: -40°C to +105°C

Environmental:

Lead free, RoHS compliant

Positions: 6 thru 26, 30 thru 40, 44, 48, 50, 56, 60, 64, & 68
 A = .079 [2.00] x No. of Positions per Row + .201 [5.10]
 B = .079 [2.00] x No. of Spaces

UNLESS OTHERWISE SPECIFIED
 ALL DIMENSIONS ARE INCHES [MM]
 TOLERANCES: EXCEPT AS NOTED
 INCHES HOLE SIZES
 .X ± .10 ØXX ± .10
 .XX ± .020 ØXXX ± .015
 .XXX ± .015 ØXXXX ± .010

ADAM TECH

909 Railway Avenue, Union, NJ 07083
 Phone: 908-687-5000 Fax: 908-687-5710

TITLE: .079 [2.00] FLAT CABLE IDC SOCKET

DRAWN	BW	01/16/07	SIZE	PART NO.	REV.
CHECKED			X	2FCS-XX-SG	A
APPROVED			REF:	SCALE: NTS	SHEET 1 OF 1



6

5

4

3

2

1