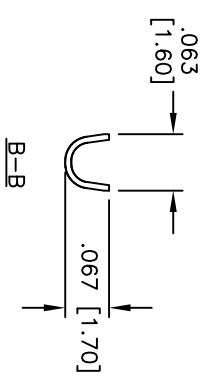
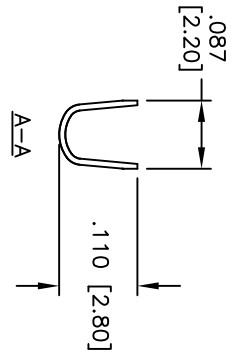
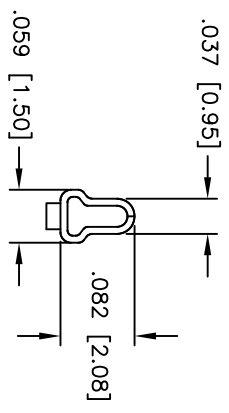
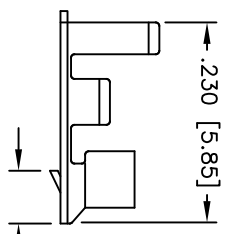
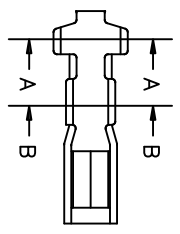


Rev	AWO #	Description	Date	Appr
-		RELEASED	4/7/05	

APPROVED: \_\_\_\_\_  
 DATE: \_\_\_\_\_ TITLE: \_\_\_\_\_



**SPECIFICATIONS:**

Material: Phosphor Bronze  
 Plating: Matt Tin over Copper underplate overall  
 Electrical: Operating voltage: 100 VAC max  
 Wire range: 22-28 AWG  
 Current rating: 1 Amp max  
 Contact resistance: 20 mohms max  
 Temperature Rating: Operating temperature: -25°C to +85°C  
 Environmental: Lead free, RoHS compliant



UNLESS OTHERWISE SPECIFIED ALL DIMENSIONS ARE INCHES [MM]	
TOLERANCES: EXCEPT AS NOTED	
INCHES	HOLDS
.X ± .10	ØX ± .10
.XX ± .020	ØXX ± .015
.XXX ± .015	ØXXX ± .010
APPROVALS	DATE
DRAWN SS	4/7/05
CHECKED	
APPROVED	

**ADAM TECH**  
 909 Rahway Avenue, Union, NJ 07083  
 Phone: 908-687-5000 Fax: 908-687-5710

TITLE: **CRIMP CONTACT, MATT TIN PLATED**

SIZE	PART NO.	REV.
X	2CTC-MT-R	-
REF:	SCALE: NTS	SHEET 1 OF 1