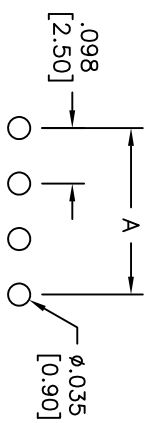
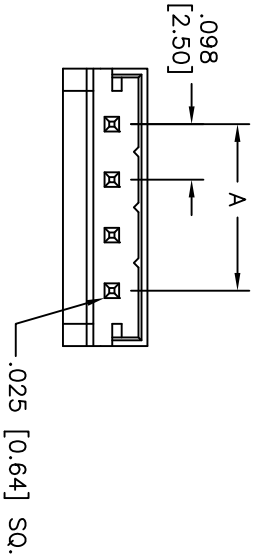
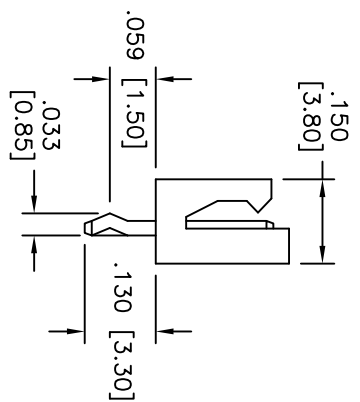
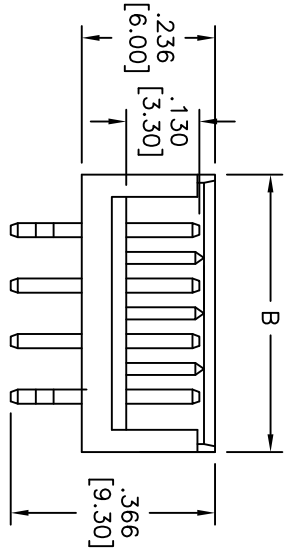


APPROVED: _____
 DATE: _____ TITLE: _____

Rev	AWO #	Description	Date	Appr
-		RELEASED	4/16/10	
A		ADDED DIM.	11/12/10	



RECOMMENDED PCB LAYOUT



SPECIFICATIONS:

Material:
 Insulator: Nylon, rated UL 94V-0
 Insulator color: Nature
 Contacts: Brass
Plating:
 Matt Tin over Nickel underplate overall

Electrical:
 Operating voltage: 250 VAC max
 Current rating: 3 Amps max
 Contact resistance: 10 mohms max
 Insulation resistance: 1000 Mohms min
 Dielectric withstanding voltage: 800 VAC for 1 minute

Temperature Rating:
 Operating temperature: -25°C to +85°C
Environmental:
 Lead free, RoHS compliant.
 Recommended soldering temp: 235°C for 5 sec.



Positions: 2 thru 15
 A = No. of Spaces x .098 [2.50]
 B = No. of Positions x .098 [2.50] + .098 [2.50]

UNLESS OTHERWISE SPECIFIED
 ALL DIMENSIONS ARE INCHES. [MM]
 TOLERANCES: EXCEPT AS NOTED
 INCHES HOLES

.X	± .10	ØX	± .10
.XX	± .020	ØXX	± .015
.XXX	± .015	ØXXX	± .010

ADAM TECH
 909 Rahway Avenue, Union, NJ 07083
 Phone: 908-687-5000 Fax: 908-687-5710
 TITLE: 2.5mm SHROUDED HEADER, SINGLE ROW,
 MATT TIN PLATED

DRAWN	DY	DATE	4/16/10
CHECKED			
APPROVED			

SIZE	PART NO.	REV.
X	25SH-C-XX-MTS	A

REF: S00723T SCALE: NTS SHEET 1 OF 1