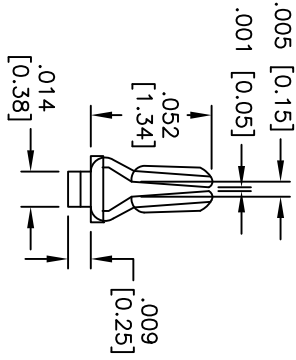
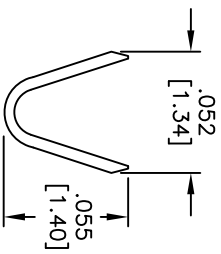
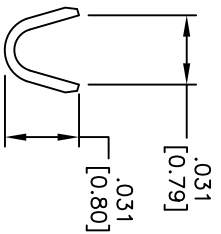
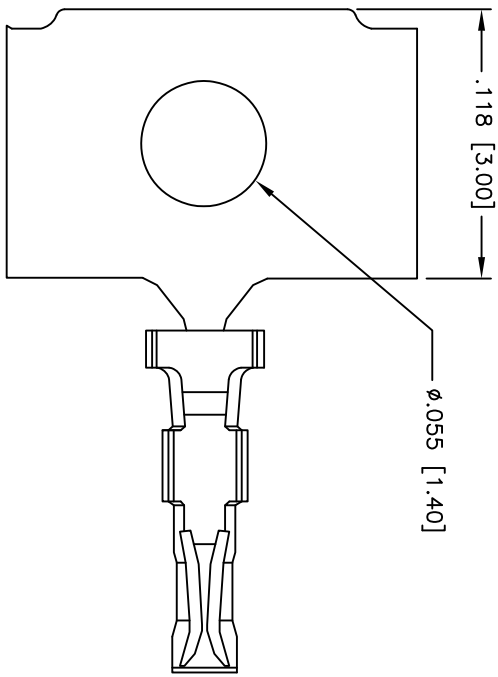
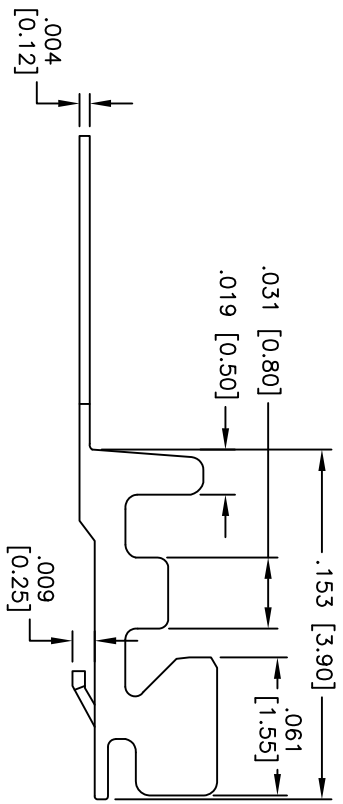


Rev	AWO #	Description	Date	Appr
-		RELEASED	01/17/07	

APPROVED: \_\_\_\_\_  
 DATE: \_\_\_\_\_ TITLE: \_\_\_\_\_



**SPECIFICATIONS:**

- Material: Phosphor Bronze
- Contact: Matt Tin over Nickel underplate overall
- Plating: Matt Tin over Nickel underplate overall
- Electrical:
  - Operating voltage: 50 VAC max
  - Current rating: 1 Amp max
  - Insulation resistance: 500 Mohms min @ 500 VDC
  - Dielectric withstanding voltage: 500 VAC for 1 minute
  - Contact resistance: 20 mohms max.
- Mechanical:
  - Recommended Wire Awg: 28 - 32 Awg
  - Temperature Rating: Operating temperature: -25°C to +85°C
  - Environmental: Lead free, RoHS compliant



UNLESS OTHERWISE SPECIFIED  
 ALL DIMENSIONS ARE INCHES [MM]  
 TOLERANCES: EXCEPT AS NOTED

INCHES	HOLDS
.X ± .10	ØX ± .10
.XX ± .020	ØXX ± .015
.XXX ± .015	ØXXX ± .010

APPROVALS: \_\_\_\_\_ DATE: \_\_\_\_\_

DRAWN	BW	01/17/07
CHECKED		
APPROVED		

**ADAM TECH**  
 909 Rahway Avenue, Union, NJ 07083  
 Phone: 908-687-5000 Fax: 908-687-5710

TITLE: SH1.0mm TERMINAL, MATT TIN PLATED

SIZE	PART NO.	REV.
X	1CTA-MT-R	-
REF:	SCALE: NTS	SHEET 1 OF 1