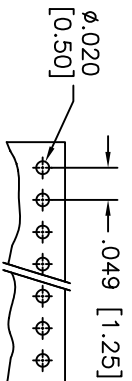
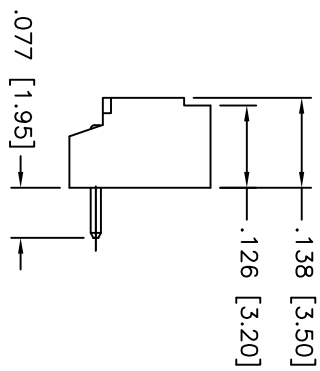
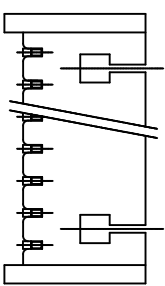
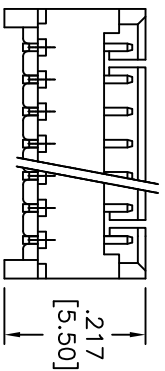
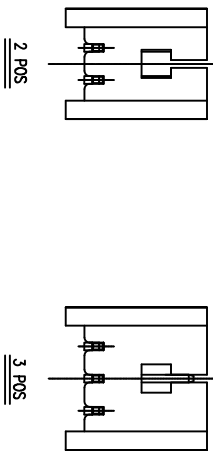
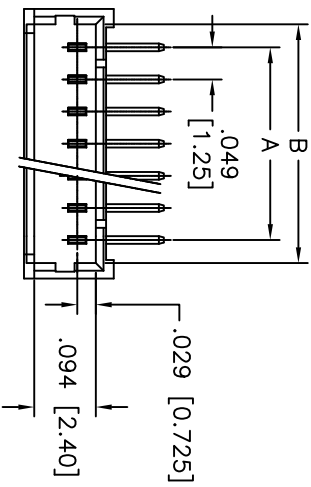
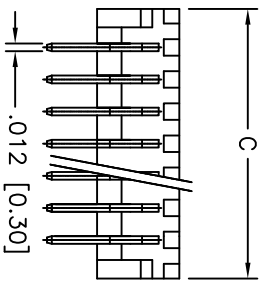


Rev	AWO #	Description	Date	Appr
-		RELEASED	6/20/11	

APPROVED: \_\_\_\_\_  
 DATE: \_\_\_\_\_ TITLE: \_\_\_\_\_



RECOMMENDED PCB LAYOUT



**SPECIFICATIONS:**

**Material:**  
 Insulator: LCP, rated UL 94V-0  
 Insulator color: Natural  
 Contacts: Phosphor Bronze

**Plating:**  
 Tin over Nickel underplate overall

**Electrical:**  
 Operating voltage: 125 VAC max  
 Current rating: 1 Amps max  
 Contact resistance: 20 mohms max  
 Insulation resistance: 100 Mohms min  
 Withstand voltage: 500 VAC for 1 minute

**Temperature Rating:**  
 Operating temperature: -40°C to +105°C  
**Environmental:**  
 Lead free, RoHS compliant.  
 Recommended soldering temp: 260°C for 5 sec.

A = .049 [1.25] X No. of Spaces  
 B = .049 [1.25] X No. of Spaces + .118 [3.00]  
 C = .049 [1.25] X No. of Spaces + .071 [1.80]

UNLESS OTHERWISE SPECIFIED  
 ALL DIMENSIONS ARE INCHES [MM]  
 TOLERANCES: EXCEPT AS NOTED

.X	± .10	Ø.X	± .10
.XX	± .020	Ø.XX	± .015
.XXX	± .015	Ø.XXX	± .010

**ADAM TECH**

909 Railway Avenue, Union, NJ 07083  
 Phone: 908-687-5000 Fax: 908-687-5710

TITLE: .049 [1.25] PITCH WIRE TO BOARD HEADER  
 RIGHT ANGLE TYPE

DRAWN	DY	6/20/11	SIZE	PART NO.	125SH-H-XX-TR	REV.	-
CHECKED							
APPROVED			REF: S00163T	SCALE: NTS		SHEET 1 OF 1	

