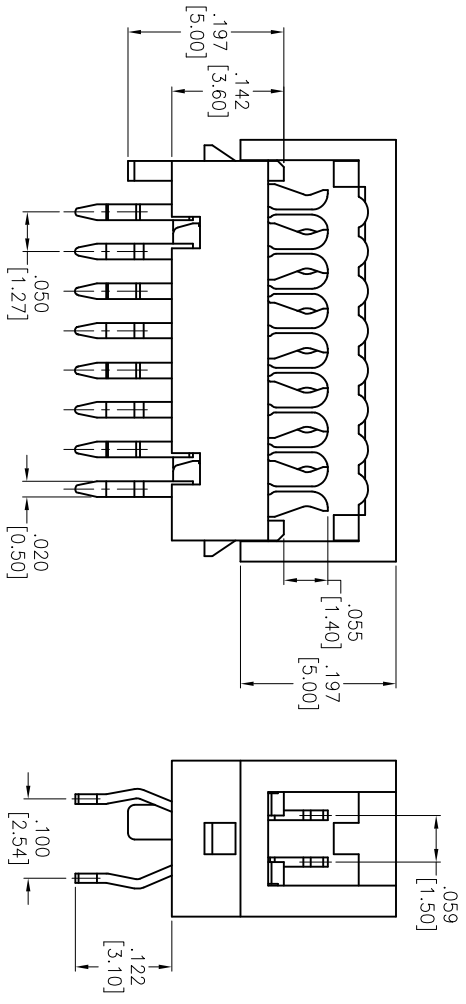
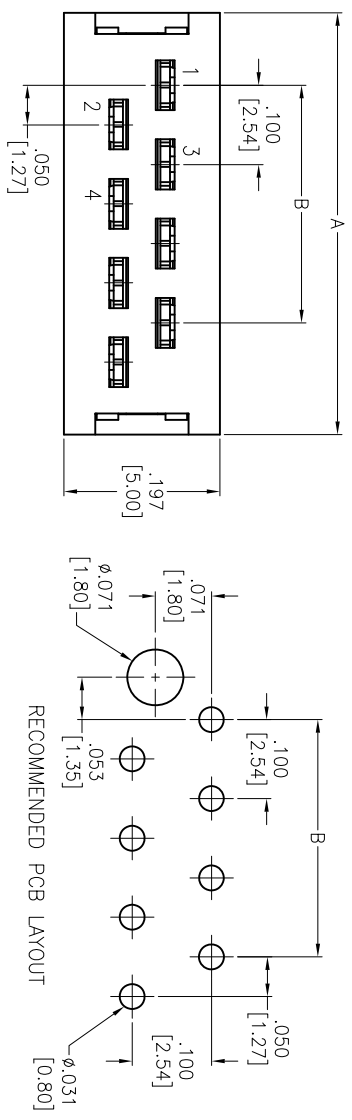


Rev	AWO #	Description	Date	Appr
-		RELEASED	7/16/15	

APPROVED: _____
 DATE: _____ TITLE: _____



SPECIFICATIONS:
 Material: Insulator: PBT, Glass reinforced, rated UL 94V-0
 Insulator color: Red
 Contacts: Phosphor Bronze
 Plating: Tin over Copper underplate overall
 Electrical: Tin over Copper underplate overall
 Current rating: 1.0 Amp
 Contact resistance: 20 mohms max.
 Insulation resistance: 1,000 Mohms min.
 Dielectric withstanding: 500 V AC/DC for 1 minute
 Operating Rating: Temperature Rating: -40°C to +105°C
 Environmental: Lead free, RoHS compliant

Positions: 04 thru 20
 A = .100 [2.54] x No. of Spaces per row + .233 [5.91]
 B = .100 [2.54] x No. of Spaces per row

UNLESS OTHERWISE SPECIFIED
 ALL DIMENSIONS ARE INCHES [MM]
 TOLERANCES: EXCEPT AS NOTED

INCHES	HOLES
.X ± .10	ØX ± .10
.XX ± .020	ØXX ± .015
.XXX ± .015	ØXXX ± .010

ADAM TECH
 909 Railway Avenue, Union, NJ 07083
 Phone: 908-687-5000 Fax: 908-687-5710

TITLE: .100 [2.54] IDC CONNECTOR,
 FLAT CABLE TO PCB PLUG

APPROVALS:

DRAWN	CHECKED	APPROVED
AY	LW	
DATE: 7/16/15	DATE: 7/16/15	

SIZE	PART NO.
X	MFC-A-XX-F-T

SCALE: NTS
 SHEET 1 OF 1



6 5 4 3 2 1