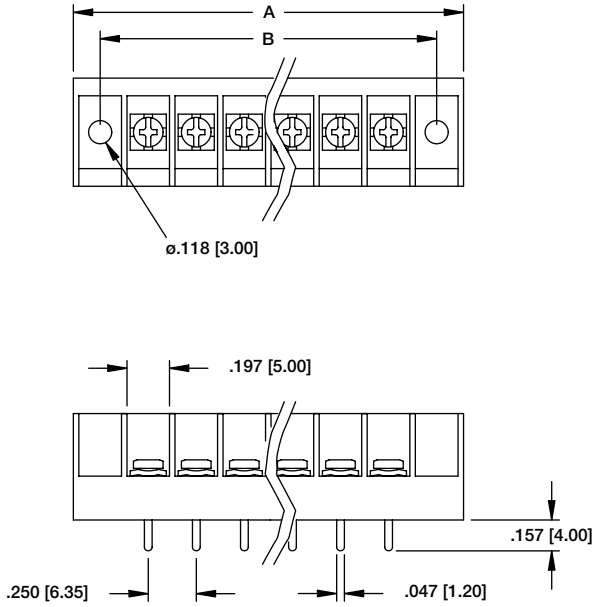
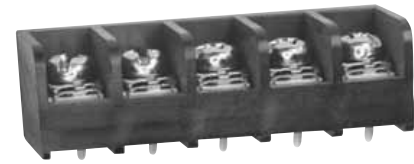


TBB



$A = .250 [6.35] \times \text{No. of Poles} + .557 [14.15]$
 $B = .250 [6.35] \times (\text{No. of Poles} + .250 [6.35])$

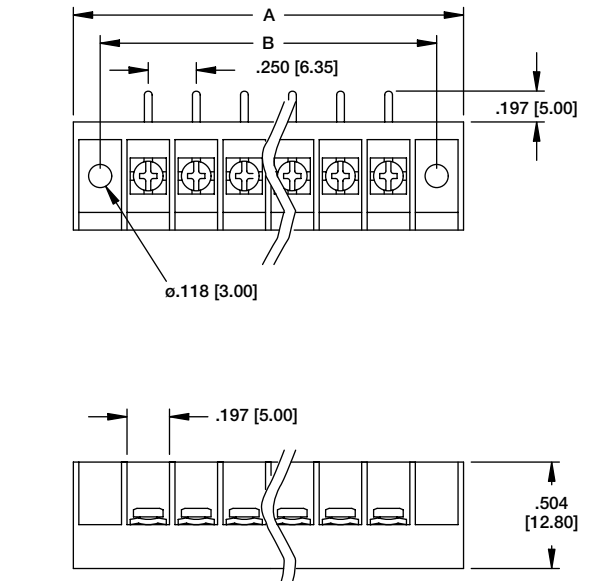


TBB-05-01-B



TBB-03-01-M

TBB



$A = .250 [6.35] \times \text{No. of Poles} + .557 [14.15]$
 $B = .250 [6.35] \times (\text{No. of Poles} + .250 [6.35])$



TBB-05-02-B



TBB-03-02-M

