

INTRODUCTION:

Adam Tech TB & TD series Terminal Blocks are a full range of Blocks which are most commonly used to terminate wires and eliminate splicing. They are offered in five different centerlines with open or closed back option. Each is available for bulkhead or PCB mounting with choice of Straight or Right Angle PCB terminals, Cliptite and or Turret Terminals. Our TB series is manufactured from flexible thermoplastic and resists cracking and breaking. Our TD series is manufactured from Hi-Temp Phenolic and has current carrying capability up to 30 Amps.

FEATURES:

Wide range of sizes and profiles
Choice of open or closed back design
Choice of multiple terminations
Flexible Break resistant Thermoplastic.

SPECIFICATIONS:

Material:

Insulator:
TB Series: PBT, rated UL94V-0
TD Series: Phenolic, glass reinforced, rated UL94V-0
Insulator Color: Black
Contacts: Brass, tin plated
Screws: Steel, nickel plated
Hardware: Brass, tin plated

Electrical:

Operation voltage: 300V AC max.
Current rating:
TBA / TBB / TDA series: 10 Amps max.
TBC / TBD / TBE / TBF / TBG / TBH series: 15 Amps max.
TDB series: 20 Amps max
TDC series: 30 Amps max
TDD series: 35 Amps max
TDG series: 6 Amps max
TDH series: 15 Amps max
TDJ series: 50 Amps max
Contact resistance: 20MΩ max
Insulation resistance: 500 MΩ min.
Dielectric withstanding voltage: 2000V AC for 1 minute

Mechanical:

Wire Range:
TBA / TBB Series: 22 – 16 Awg
TBC / TBE Series: 22 – 14 Awg
TBD Series: 22 – 14 Awg
TBF / TBG Series: 22 – 14 Awg
TDA / TDB / TDC Series: 18 - 12 Awg
TDD/TDH Series: 22 – 10 Awg
TDG Series: 22 – 12 Awg
TDJ Series: 16 – 8 Awg

Temperature Rating:

Operating temperature: -40°C to +105°C

PACKAGING:

Anti-ESD plastic bags

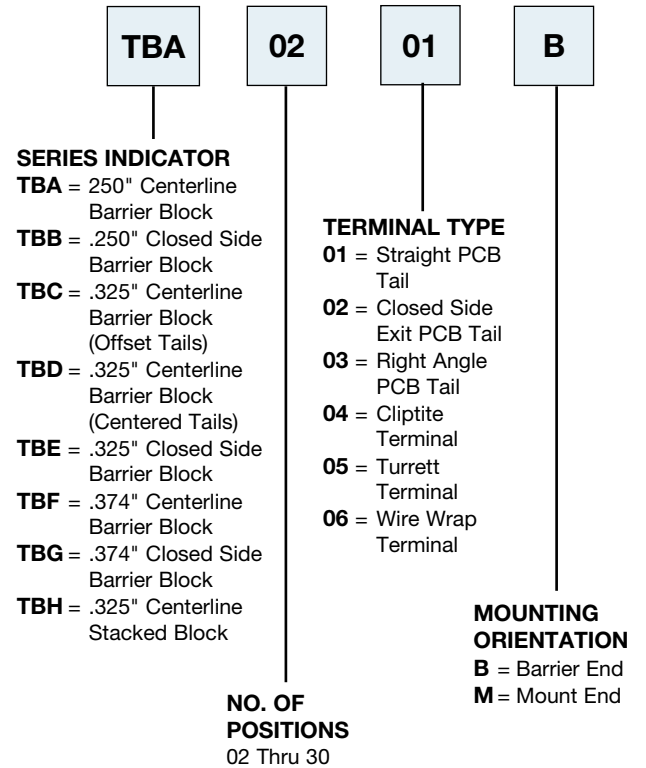
SAFETY AGENCY APPROVALS:

UL Recognized & CSA Certified,
File no. E333935



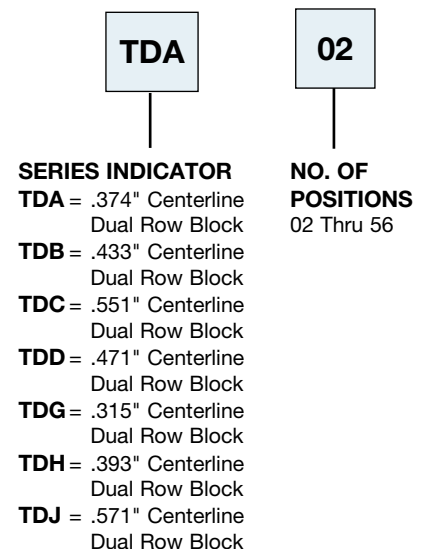
ORDERING INFORMATION

TB SERIES TERMINAL BLOCKS

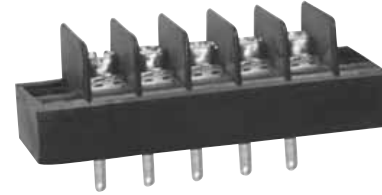
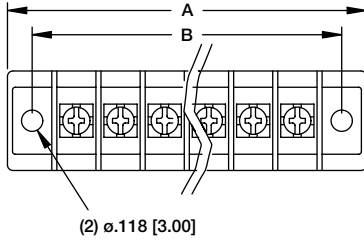


ORDERING INFORMATION

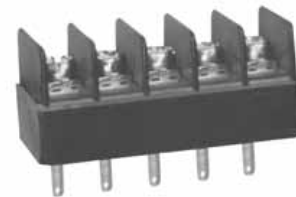
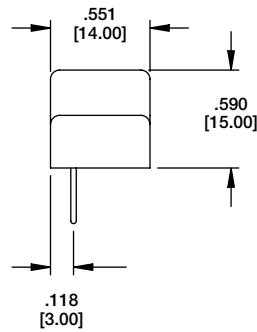
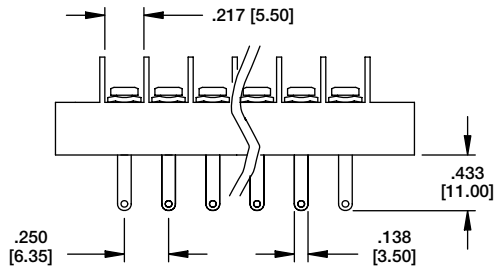
TD SERIES DUAL ROW BLOCKS



TBA



TBA-05-04-M

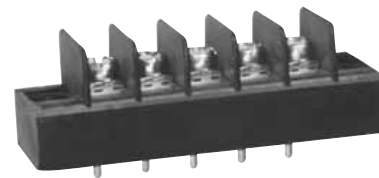
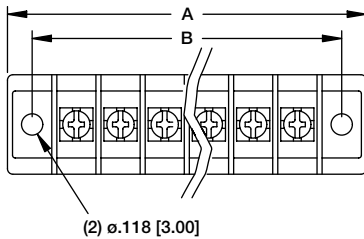


TBA-05-04-B

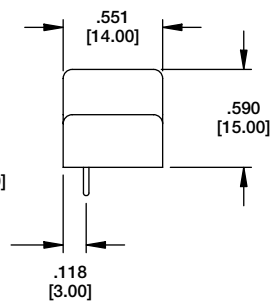
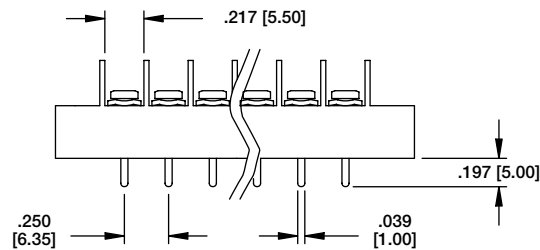
$$A = .250 [6.35] \times \text{No. of Poles} + .545 [13.85]$$

$$B = .250 [6.35] \times (\text{No. of Poles} + .250 [6.35])$$

TBA



TBA-05-01-M

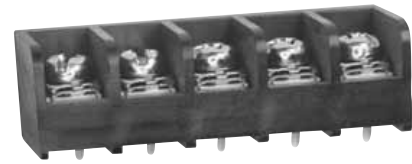
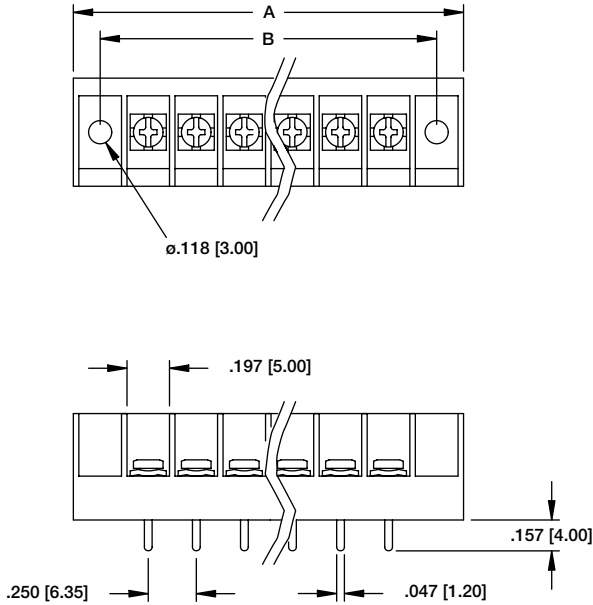


TBA-05-01-B

$$A = .250 [6.35] \times \text{No. of Poles} + .545 [13.85]$$

$$B = .250 [6.35] \times (\text{No. of Poles} + .250 [6.35])$$

TBB



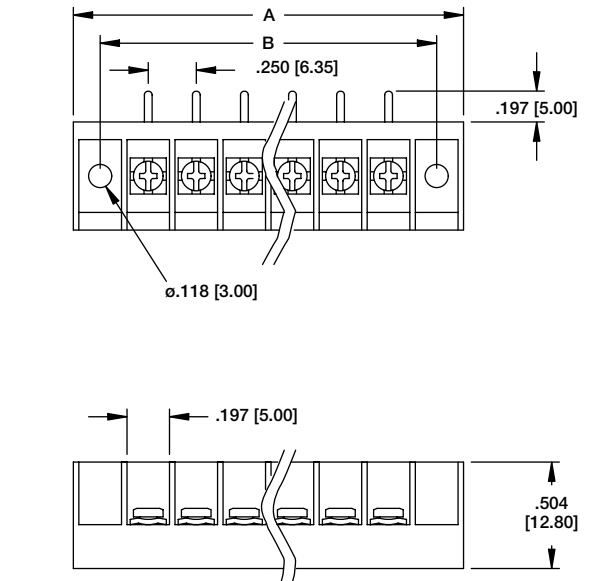
TBB-05-01-B



TBB-03-01-M

$A = .250 [6.35] \times \text{No. of Poles} + .557 [14.15]$
 $B = .250 [6.35] \times (\text{No. of Poles} + .250 [6.35])$

TBB



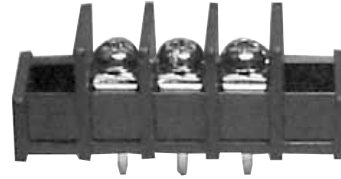
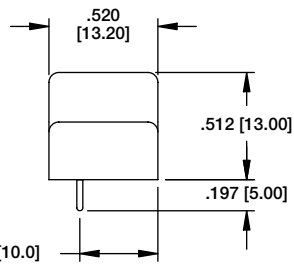
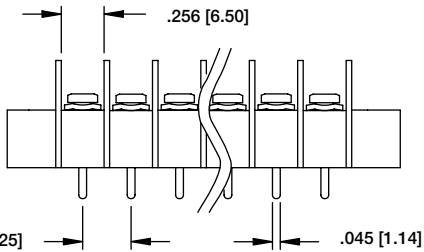
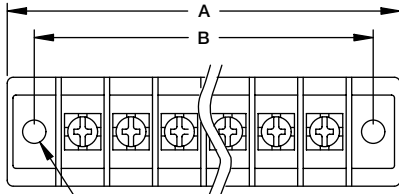
TBB-05-02-B



TBB-03-02-M

$A = .250 [6.35] \times \text{No. of Poles} + .557 [14.15]$
 $B = .250 [6.35] \times (\text{No. of Poles} + .250 [6.35])$

TBC



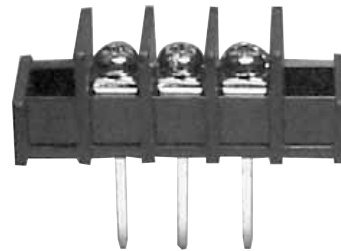
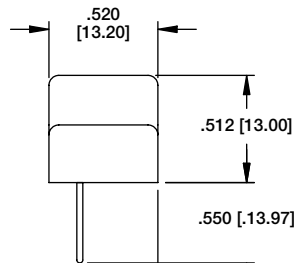
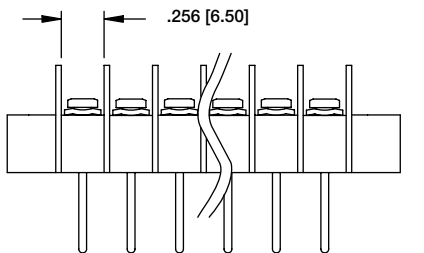
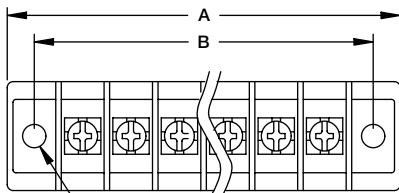
TBC-03-01-M



TBC-03-01-B

A = $.325 [8.25] \times \text{No. of Poles} + .728 [18.5]$
 B = $.325 [8.25] \times (\text{No. of Poles} + 1)$

TBC



TBC-03-06-M



TBC-03-06-B

A = $.325 [8.25] \times \text{No. of Poles} + .728 [18.5]$
 B = $.325 [8.25] \times (\text{No. of Poles} + 1)$

TBD

TBD-03-04-M

TBD-03-04-B

A = .325 [8.25] x No. of Poles + .728 [18.5]
 B = .325 [8.25] x (No. of Poles + 1)

TBD

TBD-03-01-M

TBD-03-01-B

A = .325 [8.25] x No. of Poles + .728 [18.5]
 B = .325 [8.25] x (No. of Poles + 1)

TBD

TBD-03-03-M

TBD-03-03-B

A = .325 [8.25] x No. of Poles + .728 [18.5]
 B = .325 [8.25] x (No. of Poles + 1)

TBE

TBE-05-03-B

TBE-03-03-M

A = .325 [8.25] x No. of Poles + .728 [18.5]
 B = .325 [8.25] x (No. of Poles + .325 [8.25])

TBE

TBE-05-02-B

TBE-03-02-M

A = .325 [8.25] x No. of Poles + .728 [18.5]
 B = .325 [8.25] x (No. of Poles + .325 [8.25])

TBE

TBE-05-01-B

TBE-03-01-M

A = .325 [8.25] x No. of Poles + .728 [18.5]
 B = .325 [8.25] x (No. of Poles + .325 [8.25])

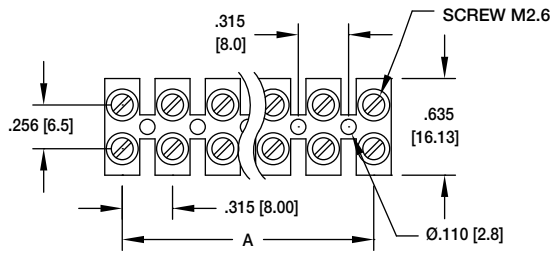
	<p>TBF-05-03-M</p> <p>TBF-05-03-B</p> <p>A = .374 [9.50] x No. of Poles + .803 [20.40] B = .374 [9.50] x (No. of Poles + .374 [9.50])</p>
	<p>TBF-05-05-M</p> <p>TBF-05-05-B</p> <p>A = .374 [9.50] x No. of Poles + .803 [20.40] B = .374 [9.50] x (No. of Poles + .374 [9.50])</p>
	<p>TBF-05-01-M</p> <p>TBF-05-01-B</p> <p>A = .374 [9.50] x No. of Poles + .803 [20.40] B = .374 [9.50] x (No. of Poles + .374 [9.50])</p>

	<p style="text-align: right;">TBG</p> <p style="text-align: center;">TBG-05-02-B</p> <p style="text-align: center;">TBG-03-02-M</p> <p style="text-align: center;">CLOSED SIDE ENTRY PCB TERMINAL</p> <p style="text-align: right;"> $A = .374 [9.50] \times \text{No. of Poles} + .807 [20.50]$ $B = .374 [9.50] \times (\text{No. of Poles} + .374 [9.50])$ </p>
	<p style="text-align: right;">TBG</p> <p style="text-align: center;">TBG-05-01-B</p> <p style="text-align: center;">TBG-03-01-M</p> <p style="text-align: right;"> $A = .374 [9.50] \times \text{No. of Poles} + .807 [20.50]$ $B = .374 [9.50] \times (\text{No. of Poles} + .374 [9.50])$ </p>
	<p style="text-align: right;">TBG</p> <p style="text-align: center;">TBG-05-03-B</p> <p style="text-align: center;">TBG-03-03-M</p> <p style="text-align: right;"> $A = .374 [9.50] \times \text{No. of Poles} + .807 [20.50]$ $B = .374 [9.50] \times (\text{No. of Poles} + .374 [9.50])$ </p>



TDG
8.0mm PITCH

TDG-10

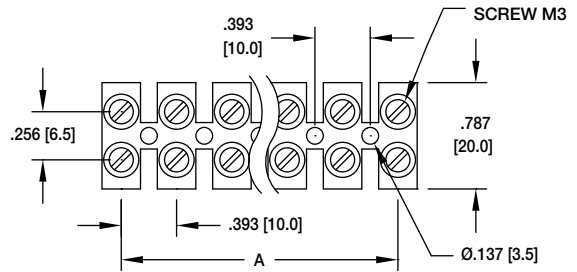


Positions 2 thru 12
A = .315 [8.00] x No. of Poles - 1



TDH
10.0mm PITCH

TDH-10

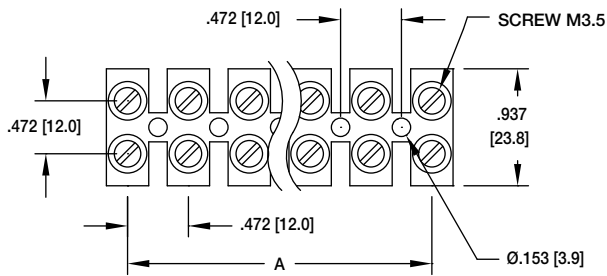


Positions 2 thru 12
A = .393 [10.00] x No. of Poles - 1

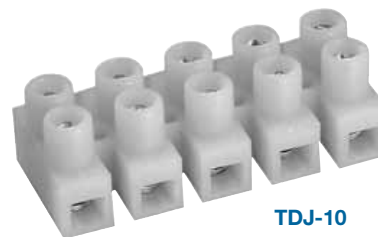


TDD
12.0mm PITCH

TDD-10

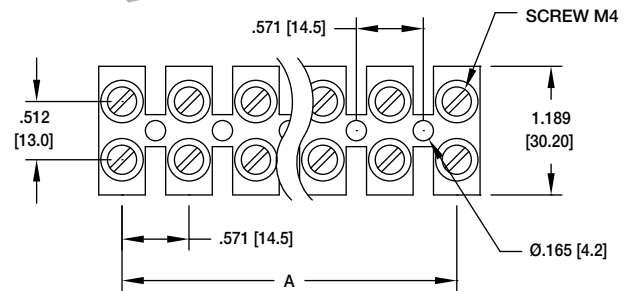


Positions 2 thru 12
A = .472 [12.00] x No. of Poles - 1



TDJ
14.5mm PITCH

TDJ-10



Positions 2 thru 12
A = .571 [14.50] x No. of Poles - 1

<p>Technical drawing of the TDA terminal block. The front view shows a dual-row arrangement of terminals with dimensions A and B for overall length, and .315 [8.00] for the distance between poles. The side view shows a height of .263 [6.70]. A detail view shows a trapezoidal terminal profile with a top width of .893 [22.68] and a height of .393 [10.00].</p>	<p>TDA</p> <p>TDA-03</p> <p>$A = .374 [9.50] \times \text{No. of Poles} + .670 [17.00]$ $B = .374 [9.50] \times \text{No. of Poles} + .374 [9.50]$</p>
<p>Technical drawing of the TDB terminal block. The front view shows a dual-row arrangement of terminals with dimensions A and B for overall length, and .33 [8.50] for the distance between poles. The side view shows a height of .320 [8.13]. A detail view shows a trapezoidal terminal profile with a top width of 1.10 [28.00] and a height of .520 [13.20].</p>	<p>TDB</p> <p>TDB-04</p> <p>$A = .433 [11.00] \times \text{No. of Poles} + .815 [20.70]$ $B = .433 [11.00] \times \text{No. of Poles} + .433 [11.00]$</p>
<p>Technical drawing of the TDC terminal block. The front view shows a dual-row arrangement of terminals with dimensions A and B for overall length, and .39 [10.00] for the distance between poles. The side view shows a height of .39 [10.00]. A detail view shows a trapezoidal terminal profile with a top width of 1.34 [34.0] and a height of .669 [17.00].</p>	<p>TDC</p> <p>TDC-04</p> <p>$A = .551 [14.00] \times \text{No. of Poles} + .104 [26.40]$ $B = .551 [14.00] \times \text{No. of Poles} + .551 [14.00]$</p>