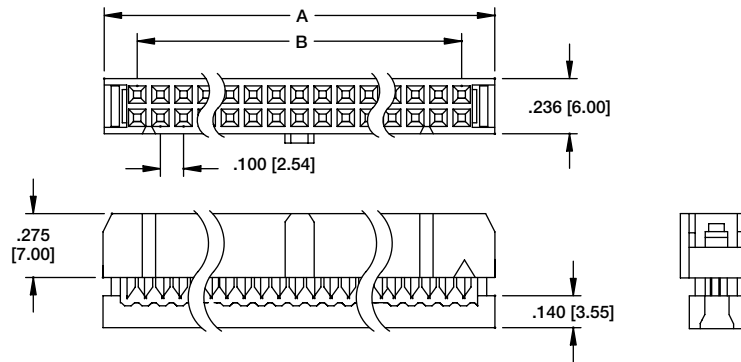
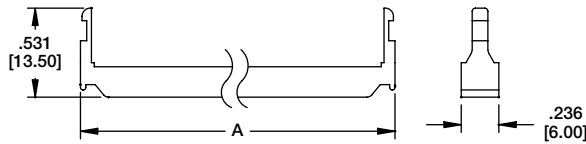


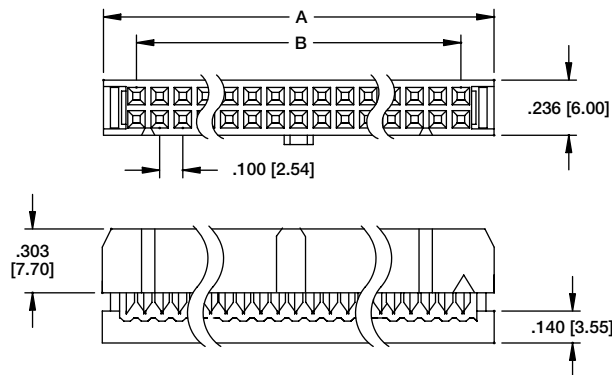
FCS
SINGLE WIPE CONTACT



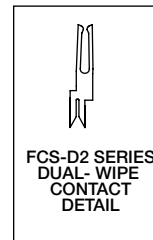
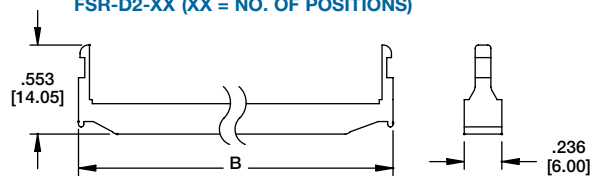
FCS STRAIN RELIEF:
FSR-XX (XX = NO. OF POSITIONS)



FCS-D2
DUAL WIPE CONTACT



FCS-D2 STRAIN RELIEF:
FSR-D2-XX (XX = NO. OF POSITIONS)



DIMENSIONS

POSITIONS	6	8	10	12	14	16	20	24	26	30	34	40	44	50	56	60	62	64
B	0.200 [5.08]	0.300 [7.62]	0.400 [10.16]	0.500 [12.70]	0.600 [15.24]	0.700 [17.78]	0.900 [22.86]	1.100 [27.94]	1.200 [30.48]	1.400 [35.56]	1.600 [40.64]	1.900 [48.26]	2.100 [53.34]	2.400 [60.96]	2.700 [68.58]	2.900 [73.66]	3.000 [76.20]	3.100 [78.74]
A	0.480 [12.19]	0.580 [14.73]	0.680 [17.27]	0.780 [19.81]	0.880 [22.35]	0.980 [24.89]	1.180 [29.97]	1.380 [35.05]	1.480 [37.59]	1.680 [42.67]	1.880 [47.75]	2.180 [55.37]	2.380 [60.45]	2.680 [68.07]	2.980 [75.69]	3.180 [80.77]	3.280 [83.31]	3.380 [85.85]