

Recommended PCB Layout

HFTR

HFTR-26-T

Part No.	A		B	
	in	mm	in	mm
HFTR-10	.413	10.50	.200	5.08
HFTR-12	.464	11.80	.250	6.35
HFTR-14	.515	13.10	.300	7.62
HFTR-16	.563	14.30	.350	8.89
HFTR-20	.665	16.90	.450	11.43
HFTR-22	.712	18.10	.500	12.70
HFTR-26	.815	20.70	.600	15.24
HFTR-30	.917	23.30	.700	17.78
HFTR-34	1.015	25.80	.800	20.32
HFTR-40	1.165	29.60	.950	24.13
HFTR-44	1.263	32.10	1.050	26.67
HFTR-50	1.413	35.90	1.200	30.48

Recommended PCB Layout

HFDP

HFDP-80-T

Part No.	A		B	
	in	mm	in	mm
HFDP-30-T	0.938	23.83	0.700	17.78
HFDP-50-T	1.438	36.53	1.200	30.48
HFDP-68-T	1.888	47.96	1.650	41.91
HFDP-80-T	2.188	55.58	1.950	49.53
HFDP-100-T	2.688	68.28	2.450	62.23

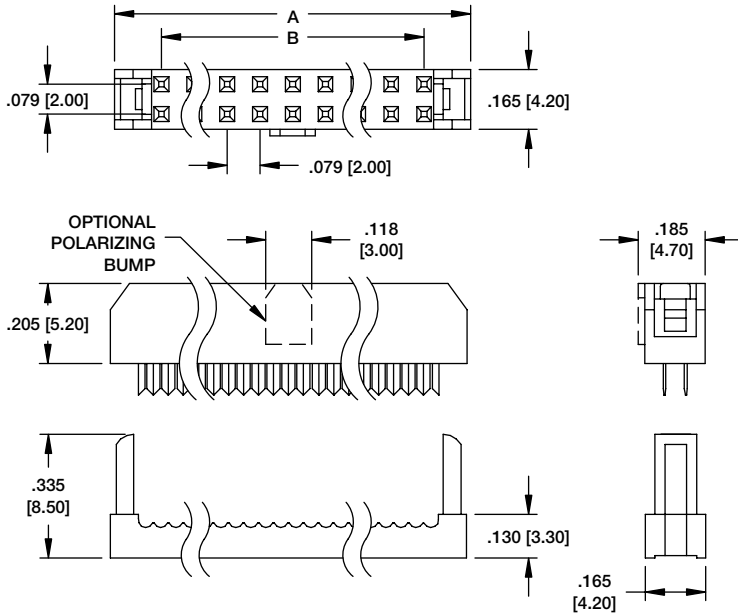
Recommended PCB Layout

FDH

FDH-34-T

Part No.	A		B	
	in	mm	in	mm
FDH-10-T	.689	17.50	.450	11.43
FDH-14-T	.889	22.58	.650	16.51
FDH-16-T	.989	25.12	.750	19.05
FDH-20-T	1.189	30.20	.950	24.13
FDH-26-T	1.489	37.82	1.250	31.75
FDH-34-T	1.889	47.98	1.650	41.91
FDH-40-T	2.189	55.60	1.950	49.53
FDH-50-T	2.689	68.30	2.450	62.23
FDH-60-T	3.189	81.00	2.950	74.93

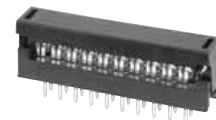
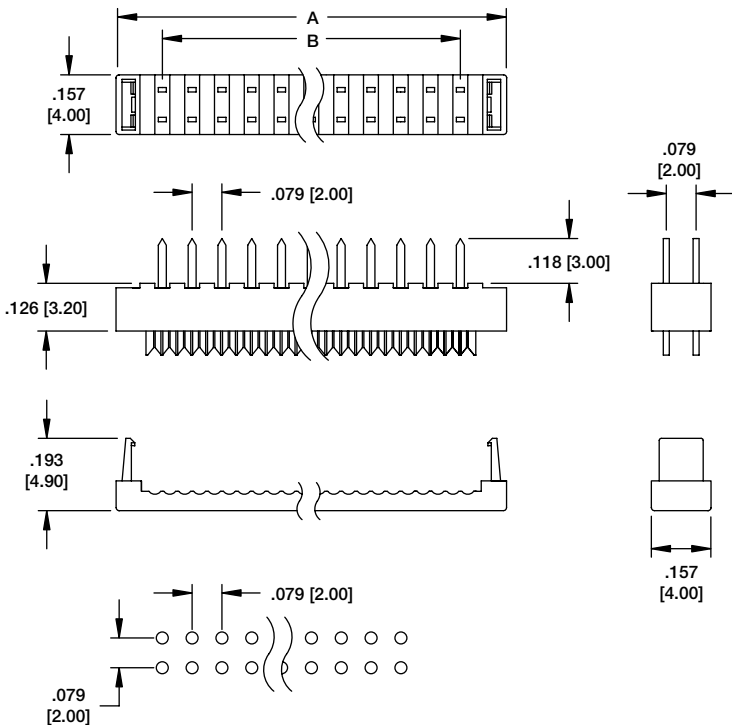
2FCS



2FCS-20-SG

PART No. & POSITIONS	DIMENSIONS	
	A	B
2FCS-20-SG	.992 [25.10]	.709 [18.00]
2FCS-22-SG	1.071 [27.20]	.787 [20.00]
2FCS-24-SG	1.150 [29.20]	.866 [22.00]
2FCS-26-SG	1.228 [31.00]	.945 [24.00]
2FCS-34-SG	1.543 [39.20]	1.260 [32.00]
2FCS-36-SG	1.622 [41.20]	1.339 [34.00]
2FCS-40-SG	1.780 [45.10]	1.496 [38.00]
2FCS-44-SG	1.937 [49.20]	1.654 [42.00]
2FCS-50-SG	2.773 [55.10]	1.890 [48.00]
2FCS-60-SG	2.567 [65.20]	2.283 [58.00]
2FCS-68-SG	2.882 [73.20]	2.598 [66.00]

2FTR



2FTR-20-T

PART No. & POSITIONS	DIMENSIONS	
	A	B
2FTR-08-T	.480 [12.20]	.236 [6.00]
2FTR-10-T	.559 [14.20]	.315 [8.00]
2FTR-12-T	.637 [16.20]	.3937 [10.00]
2FTR-14-T	.716 [18.20]	.472 [12.00]
2FTR-16-T	.795 [20.20]	.551 [14.00]
2FTR-20-T	.952 [24.20]	.629 [16.00]
2FTR-22-T	1.031 [26.20]	.708 [18.00]
2FTR-24-T	1.110 [28.20]	.866 [22.00]
2FTR-26-T	1.189 [30.20]	.945 [24.00]
2FTR-34-T	1.503 [38.20]	1.260 [32.00]
2FTR-40-T	1.740 [44.20]	1.496 [38.00]
2FTR-44-T	1.897 [48.20]	1.654 [42.00]
2FTR-50-T	2.133 [54.20]	1.890 [48.00]
2FTR-68-T	2.842 [72.20]	2.598 [66.00]

Recommended PCB Layout

INTRODUCTION:

Adam Tech's Flat Cable DIP & Transition plugs are a one piece connector system that quickly and easily mass terminates flat cable then mounts directly to the PCB or PCB socket. These connectors are ideal for interconnecting PCB's in a permanent flat cable transition or satisfying disconnect applications. Our low profile design allows an increased board to board stacking density.

FEATURES:

Available in 8 – 64 positions
 Eliminates need for two piece header & Socket set
 Fast easy mass termination without stripping cable
 Heavy duty Tin plated contacts
 Low Profile, high density board to board stacking
 Plugs into IC Socket or solders directly to PCB

SPECIFICATIONS:

Material:

Insulator: PBT, glass reinforced, rated UL94V-0
 Optional Hi-Temp insulator: Nylon 6T, rated UL94V-0
 Insulator Color: Black (Gray optional)

Contacts: Brass

Contact Plating:

G = Gold over nickel underplate on contact area, Tin over copper underplate on IDC area.

T = Tin over copper underplate overall

Electrical:

Operating voltage: 250V AC max.
 Current rating: 3 Amp max
 Contact resistance: 20 mΩ max. initial
 Insulation resistance: 5000 MΩ min.
 Dielectric withstanding voltage: 1000V AC for 1 minute

Mechanical:

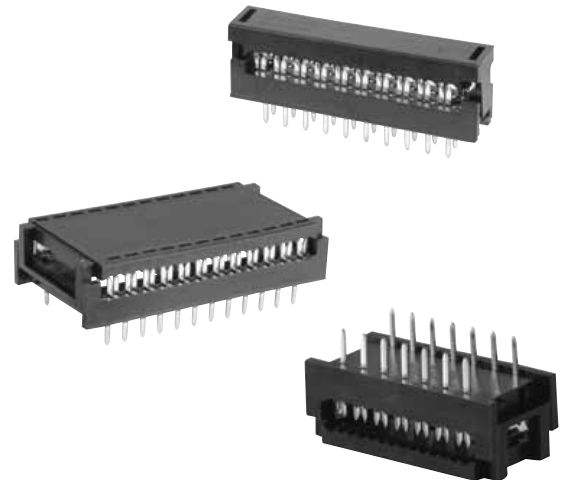
Recommended cable size: 28 Awg stranded
 Temperature Rating:
 Operating temperature: -40°C to +105°C

PACKAGING:

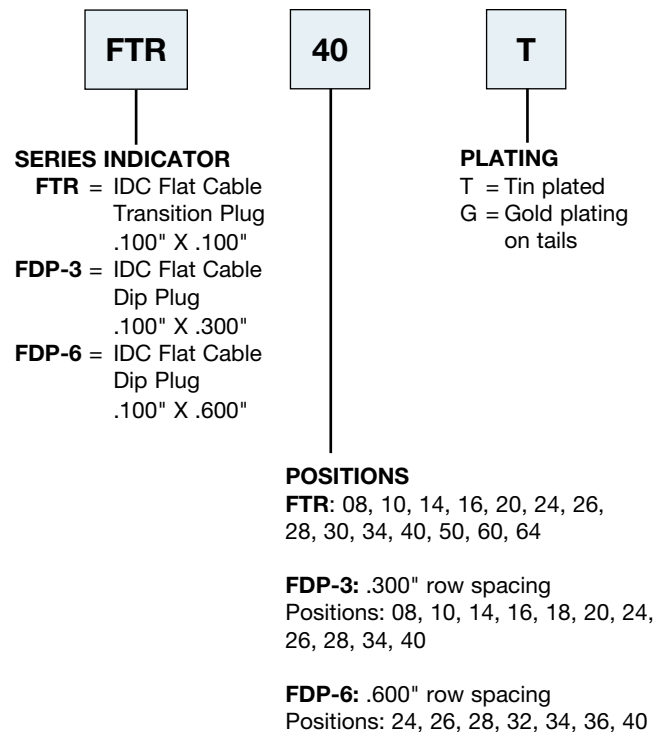
Anti-ESD plastic trays

SAFETY AGENCY APPROVALS:

UL Recognized & CSA Certified, File no. E224053



ORDERING INFORMATION



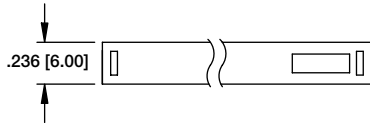
OPTIONS:

Add designator(s) to end of part number
 30 = 30 μin gold plating in contact area
 GY = Gray color insulator
 RT = Board retention



FTR SERIES

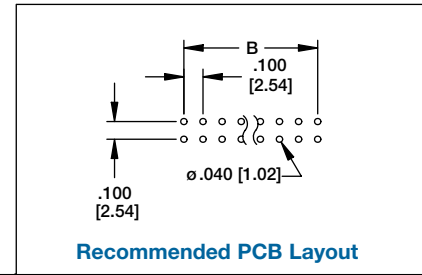
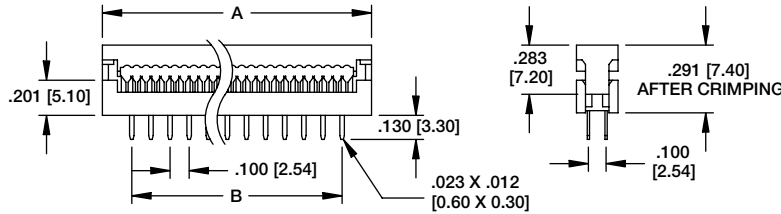
.100" X .100" (8P-64P)



A = .100 [2.54] x No. of Positions per row + .310 [7.88]
 B = .100 [2.54] x No. of Spaces per row



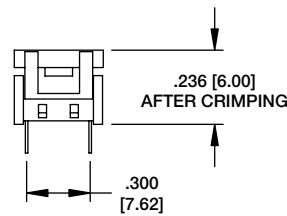
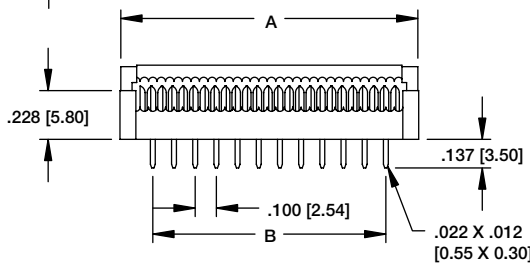
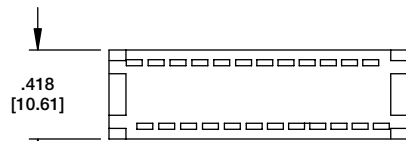
FTR-14-T



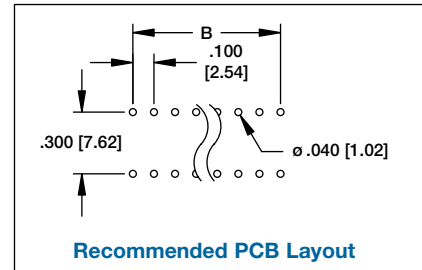
Recommended PCB Layout

FDP SERIES

.100" X .300" (8P-20P)



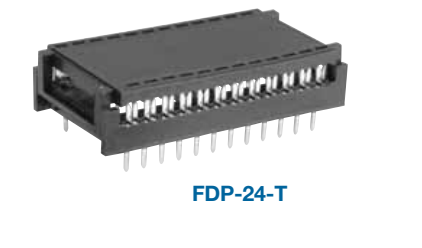
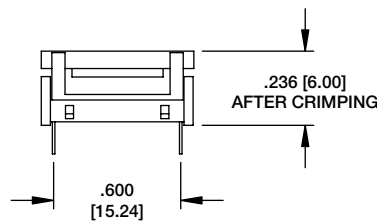
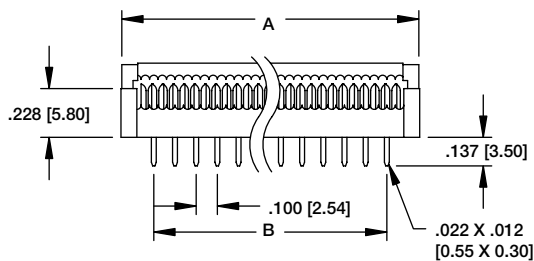
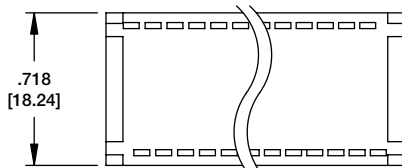
FDP-14-T



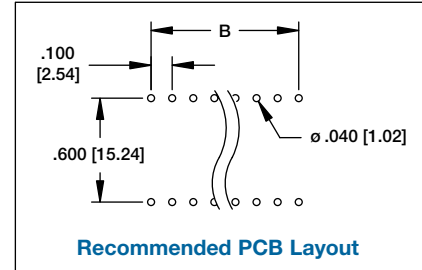
Recommended PCB Layout

FDP SERIES

.100" X .600" (24P-40P)



FDP-24-T



Recommended PCB Layout