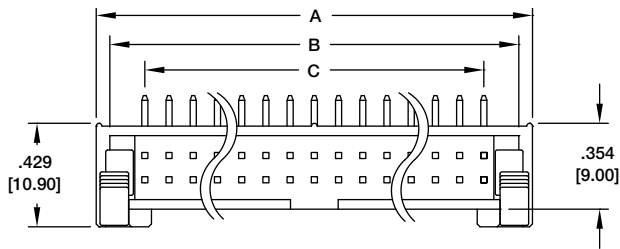
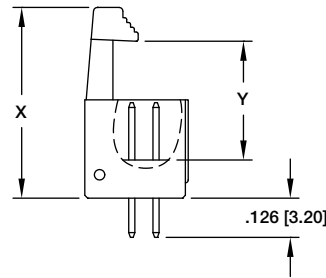
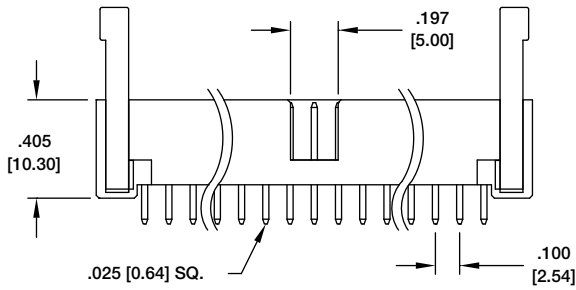


### BHR STRAIGHT MOUNT BOX HEADER WITH LATCHES

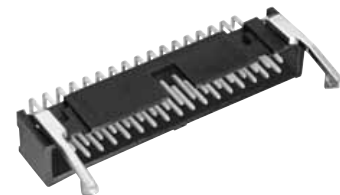
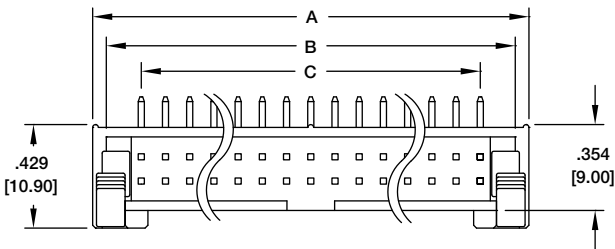


**BHR-34-VUA-ML**

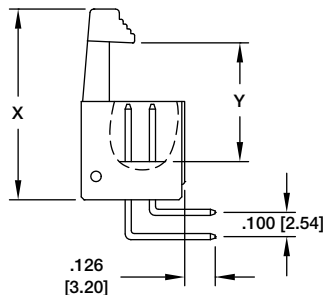
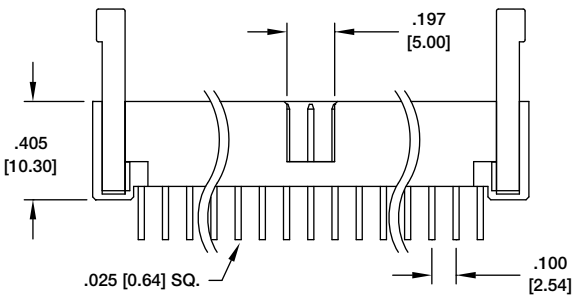


$A = .100 [2.54] \times \text{No. of Positions} / 2 + .301 [7.66]$   
 $B = .100 [2.54] \times \text{No. of Positions} / 2 + .189 [4.80]$   
 $C = .100 [2.54] \times \text{No. of Positions} / 2 - 1$

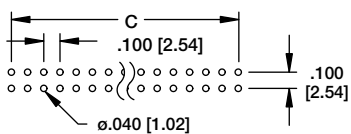
### BHR RIGHT ANGLE MOUNT BOX HEADER WITH LATCHES



**BHR-34-HUA-ML**



$A = .100 [2.54] \times \text{No. of Positions} / 2 + .301 [7.66]$   
 $B = .100 [2.54] \times \text{No. of Positions} / 2 + .189 [4.80]$   
 $C = .100 [2.54] \times \text{No. of Positions} / 2 - 1$



**Recommended PCB Layout**

LATCH TYPE	DIMENSIONS	
	X	Y
LONG LATCH (-LL)	1.035 [26.30]	.575 [14.60]
SHORT LATCH (-SL)	.901 [22.90]	.417 [10.60]