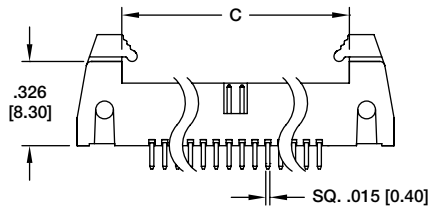
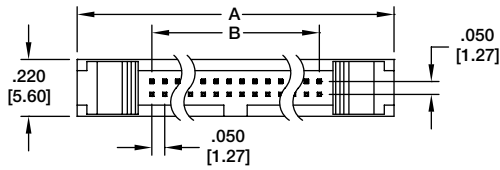


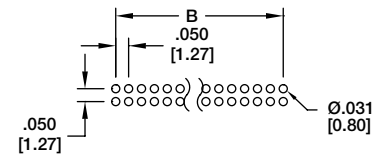
**HMHR-A**  
**.050" X .050"**  
**STRAIGHT PCB MOUNT**



A = .050 [1.27] X No. of Spaces + .233 [5.92]  
 B = .050 [1.27] X No. of Spaces  
 C = .050 [1.27] X No. of Spaces + .621 [15.77]

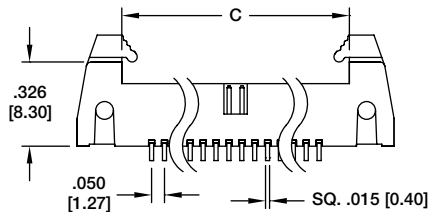
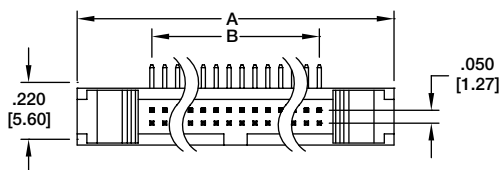


**HMHR-A-50-VUAS**

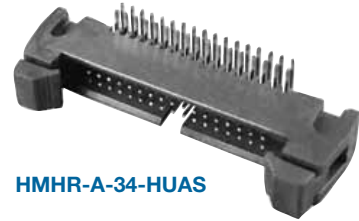


**Recommended PCB Layout**

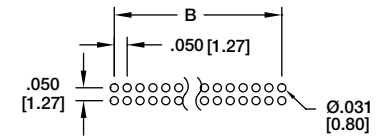
**HMHR-A**  
**.050" X .050"**  
**RIGHT ANGLE PCB MOUNT**



A = .050 [1.27] X No. of Spaces + .233 [5.92]  
 B = .050 [1.27] X No. of Spaces  
 C = .050 [1.27] X No. of Spaces + .621 [15.77]

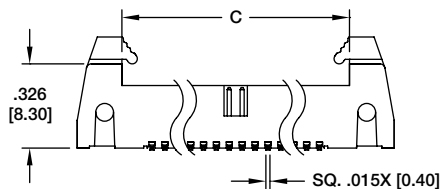
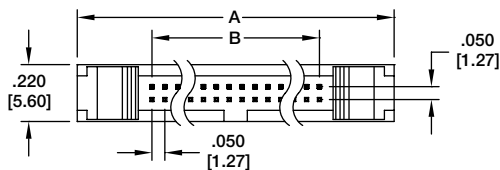


**HMHR-A-34-HUAS**

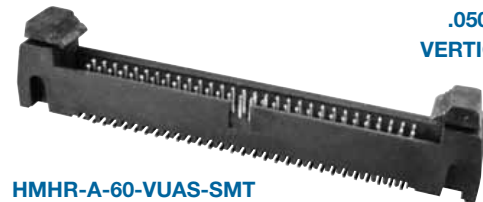


**Recommended PCB Layout**

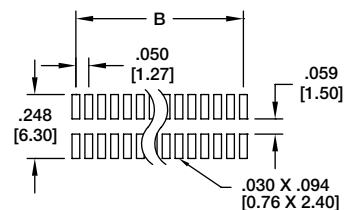
**HMHR-A**  
**.050" X .050"**  
**VERTICAL SMT**



A = .050 [1.27] X No. of Spaces + .233 [5.92]  
 B = .050 [1.27] X No. of Spaces  
 C = .050 [1.27] X No. of Spaces + .621 [15.77]



**HMHR-A-60-VUAS-SMT**



**Recommended PCB Layout**