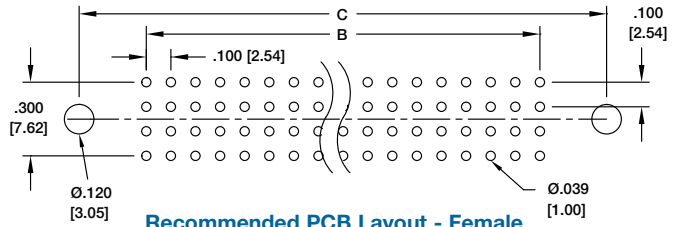
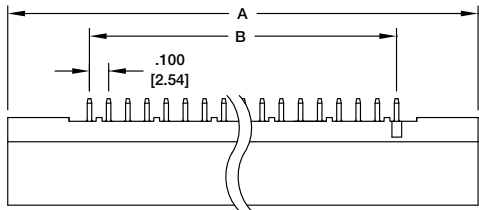
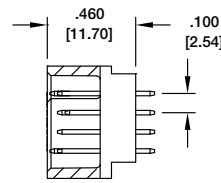
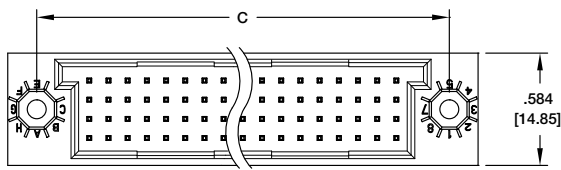


#### DIN-240MS-L44-A1 4 ROW MALE STRAIGHT

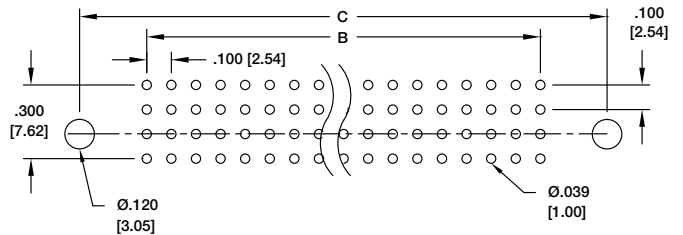
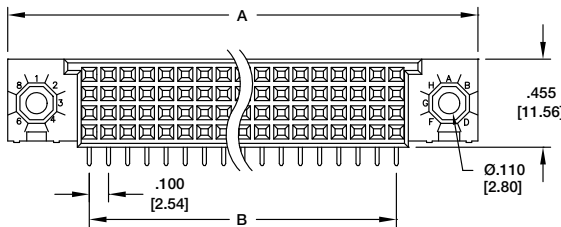


Recommended PCB Layout - Female

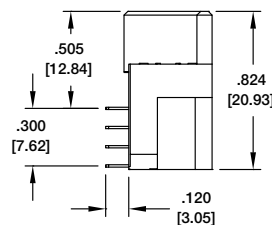
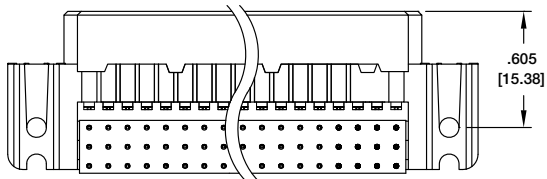


POSITIONS	DIMENSIONS		
	A	B	C
100	3.250 [82.55]	2.400 [60.96]	2.950 [74.93]
128	3.950 [100.33]	3.100 [78.74]	3.650 [92.71]
160	4.750 [120.65]	3.900 [99.06]	4.450 [113.03]
200	5.750 [146.05]	4.900 [124.46]	5.450 [138.43]
240	6.750 [171.45]	5.900 [149.86]	6.450 [163.83]

#### DIN-240FR-L44-A1 4 ROW FEMALE RIGHT ANGLE



Recommended PCB Layout - Female



POSITIONS	DIMENSIONS		
	A	B	C
100	3.250 [82.55]	2.400 [60.96]	2.950 [74.93]
128	3.950 [100.33]	3.100 [78.74]	3.650 [92.71]
160	4.750 [120.65]	3.900 [99.06]	4.450 [113.03]
200	5.750 [146.05]	4.900 [124.46]	5.450 [138.43]
240	6.750 [171.45]	5.900 [149.86]	6.450 [163.83]