

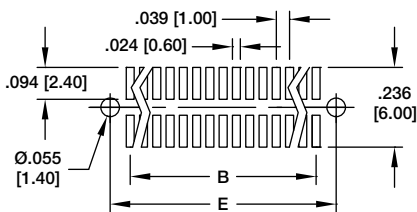
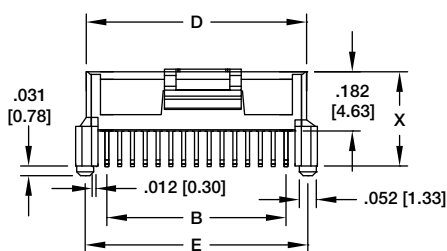
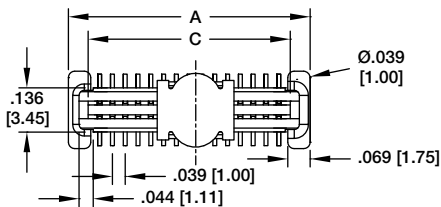
BB10-PO-XXX-G-X.XX-PP-T/R
1.00mm MALE



BB10-PO-020-G-X.XX-PP-T/R

Replace (XX) in Part No. with No. of Positions
 Replace (X.XX) in Part No. with stacking height
 Options: (-PP) pick/place pad, (-TR) tape and reel packaging
 Positions: 10 thru 100
 $A = .039 [1.00] \times (\text{No. of Positions per row}) + .154 [3.90]$
 $B = .039 [1.00] \times (\text{No. of Positions per row}) - .039 [1.00]$
 $C = .039 [1.00] \times (\text{No. of Positions per row}) + .012 [0.30]$
 $D = .039 [1.00] \times (\text{No. of Positions per row}) + .102 [2.58]$
 $E = .039 [1.00] \times (\text{No. of Positions per row}) + .094 [2.40]$

PLUG HEIGHT	SOCKET HEIGHT	STACKING HEIGHT
.250 [6.35]	.211 [5.37]	.315 [8.00]
.250 [6.35]	.290 [7.37]	.394 [10.00]
.250 [6.35]	.330 [8.37]	.433 [11.00]
.250 [6.35]	.408 [10.37]	.512 [13.00]
.289 [7.35]	.211 [5.37]	.354 [9.00]
.289 [7.35]	.330 [8.37]	.472 [12.00]
.289 [7.35]	.408 [10.37]	.551 [14.00]
.329 [8.35]	.408 [10.37]	.591 [15.00]



BB10-SO-XXX-G-X.XX-PP-T/R
1.00mm FEMALE



BB10-SO-020-G-X.XX-PP-T/R

Replace (XX) in Part No. with No. of Positions
 Replace (X.XX) in Part No. with stacking height
 Options: (-PP) pick/place pad, (-TR) tape and reel packaging
 Positions: 10 thru 100
 $A = .039 [1.00] \times (\text{No. of Positions per row}) + .154 [3.90]$
 $B = .039 [1.00] \times (\text{No. of Positions per row}) - .039 [1.00]$
 $C = .039 [1.00] \times (\text{No. of Positions per row}) + .031 [0.80]$
 $D = .039 [1.00] \times (\text{No. of Positions per row}) + .087 [2.22]$
 $E = .039 [1.00] \times (\text{No. of Positions per row}) + .094 [2.40]$

PLUG HEIGHT	SOCKET HEIGHT	STACKING HEIGHT
.250 [6.35]	.211 [5.37]	.315 [8.00]
.289 [7.35]	.211 [5.37]	.354 [9.00]
.250 [6.35]	.290 [7.37]	.394 [10.00]
.250 [6.35]	.330 [8.37]	.433 [11.00]
.289 [7.35]	.330 [8.37]	.472 [12.00]
.250 [6.35]	.408 [10.37]	.512 [13.00]
.289 [7.35]	.408 [10.37]	.551 [14.00]
.329 [8.35]	.408 [10.37]	.591 [15.00]