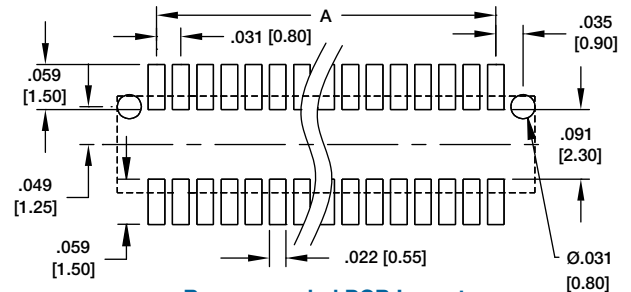
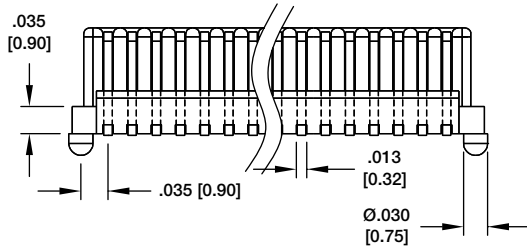


BB8-PL-XXX-G-3.55-T/R
0.8mm MALE



BB8-PL-010-G-3.55-T/R



Recommended PCB Layout

| PLUG HEIGHT | SOCKET HEIGHT | STACKING HEIGHT |
|-------------|---------------|-----------------|
| .140 [3.55] | .140 [3.55] | .181 [4.60] |
| .140 [3.55] | .199 [5.05] | .236 [6.00] |
| .140 [3.55] | .215 [5.45] | .256 [6.50] |
| .140 [3.55] | .238 [6.05] | .276 [7.00] |

Replace (XX) in Part No. with No. of Positions

Replace (X.XX) in Part No. with stacking height

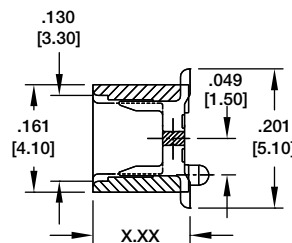
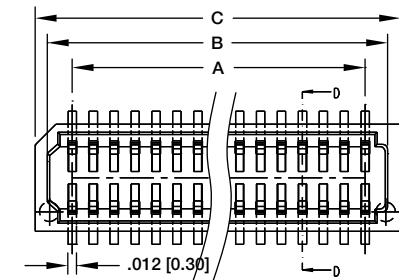
Options: (-PP) pick/place pad, (-TR) tape and reel packaging

Position: 10 thru 100

A = .020 [0.50] x (No. of Contacts/2 - 1)

B = .020 [0.50] x (No. of Contacts/2 - 1) + .063 [1.60]

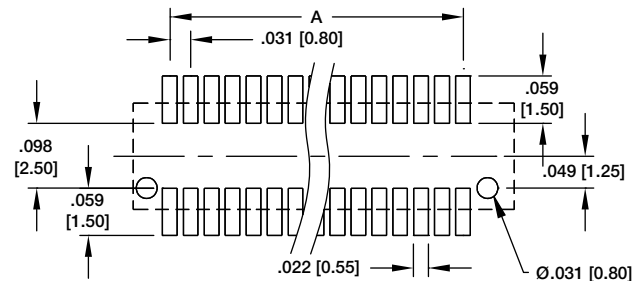
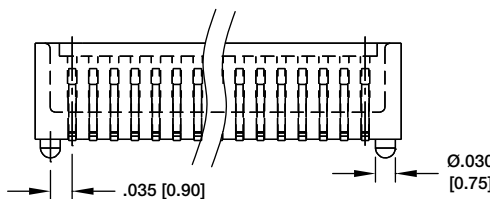
C = .020 [0.50] x (No. of Contacts/2 - 1) + .098 [2.50]



BB8-SL-XXX-G-X.XX-T/R
0.8mm FEMALE



BB8-SL-010-G-X.XX-T/R



Recommended PCB Layout

| PLUG HEIGHT | SOCKET HEIGHT | STACKING HEIGHT |
|-------------|---------------|-----------------|
| .140 [3.55] | .140 [3.55] | .181 [4.60] |
| .140 [3.55] | .199 [5.05] | .236 [6.00] |
| .140 [3.55] | .215 [5.45] | .256 [6.50] |
| .140 [3.55] | .238 [6.05] | .276 [7.00] |

Replace (XX) in Part No. with No. of Positions

Replace (X.XX) in Part No. with stacking height

Options: (-PP) pick/place pad, (-TR) tape and reel packaging

Position: 10 thru 100

A = .031 [0.80] x (No. of Contacts/2 - 1)

B = .031 [0.80] x (No. of Contacts/2 - 1) + .063 [1.60]

C = .031 [0.80] x (No. of Contacts/2 - 1) + .126 [3.20]

BB8-PN-010-G-X.XX-T/R

BB8-PN-XXX-G-X.XX-T/R
0.8mm MALE

BB8-SN-010-G-X.XX-T/R

BB8-SN-XXX-G-X.XX-T/R
0.8mm FEMALE

| PLUG (X.XX) | Socket Height (A1) | Mating Height (H) |
|-------------|--------------------|-------------------|
| .140 [3.55] | .144 [3.65] | .177 [4.50] |
| | .163 [4.15] | .197 [5.00] |
| | .203 [5.15] | .236 [6.00] |
| | .222 [5.65] | .256 [6.50] |
| .159 [4.05] | .185 [4.70] | .222 [5.65] |
| | .163 [4.15] | .217 [5.50] |
| | .222 [5.65] | .276 [7.00] |
| | .185 [4.70] | .242 [6.15] |

Replace (XX) in Part No. with No. of Positions
 Replace (X.XX) in Part No. with stacking height
 Options: (-PP) pick/place pad, (-TR) tape and reel packaging
 Positions: 10, 12, 14, 16, 18, 20, 22, 24, 26, 28, 30, 32, 34, 36, 38, 40, 50, 60, 68, 70, 80, 90, 100

A = .031 [0.80] x (No. of Positions per row - 1)
 B = .031 [0.80] x (No. of Positions per row - 1) + .065 [1.65]
 C = .031 [0.80] x (No. of Positions per row - 1) + .094 [2.40]
 D = .031 [0.80] x (No. of Positions per row - 1) + .071 [1.80]

BB8-PN-010-G-X.XX-T/R

BB8-PN-XXX-G-X.XX-T/R
0.8mm MALE

BB8-SN-010-G-X.XX-T/R

BB8-SN-XXX-G-X.XX-T/R
0.8mm FEMALE

| Socket (X.XX) | Plug Height (A1) | Mating Height (H) |
|---------------|------------------|-------------------|
| .144 [3.65] | .140 [3.55] | .177 [4.50] |
| | .163 [4.15] | .197 [5.00] |
| | .203 [5.15] | .236 [6.00] |
| | .222 [5.65] | .256 [6.50] |
| .159 [4.05] | .140 [3.55] | .217 [5.50] |
| | .159 [4.05] | .276 [7.00] |
| | .140 [3.55] | .222 [5.65] |
| .185 [4.70] | .159 [4.05] | .242 [6.15] |

Replace (XX) in Part No. with No. of Positions
 Replace (X.XX) in Part No. with stacking height
 Options: (-PP) pick/place pad, (-TR) tape and reel packaging
 Positions: 10, 12, 14, 16, 18, 20, 22, 24, 26, 28, 30, 32, 34, 36, 38, 40, 50, 60, 68, 70, 80, 90, 100

A = .031 [0.80] x (No. of Positions per row - 1)
 B = .031 [0.80] x (No. of Positions per row - 1) + .067 [1.70]
 C = .031 [0.80] x (No. of Positions per row - 1) + .118 [3.00]
 D = .031 [0.80] x (No. of Positions per row - 1) + .071 [1.80]