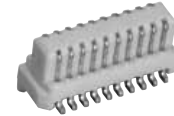
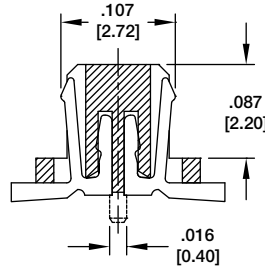
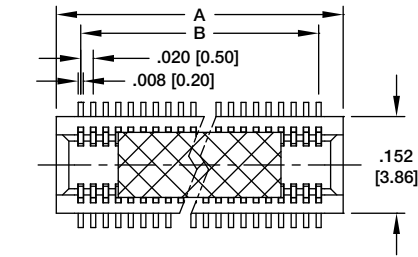
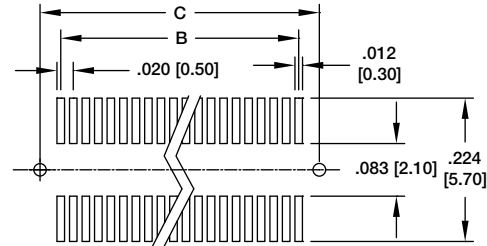
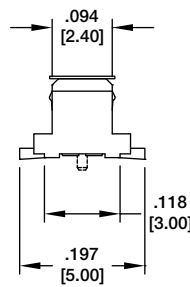
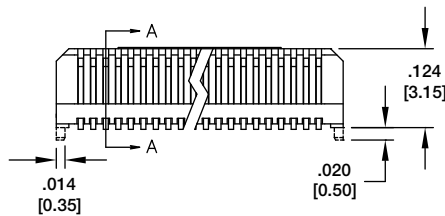


BB5-PO-XXX-G-3.15-PP-T/R 0.5mm MALE



BB5-PO-020-G-3.15-T/R



PLUG HEIGHT	SOCKET HEIGHT	STACKING HEIGHT
.124 [3.15]	.118 [3.00]	.157 [4.00]
.124 [3.15]	.138 [3.50]	.177 [4.50]
.124 [3.15]	.157 [4.00]	.197 [5.00]
.124 [3.15]	.236 [6.00]	.276 [5.00]

Recommended PCB Layout

Replace (XXX) in Part No. with No. of Positions

Positions: 10 thru 100

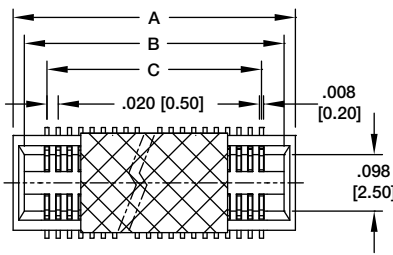
Options: (-PP) pick/place pad, (-TR) tape and reel packaging

A = .020 [0.50] x (No. of Positions per row) + .059 [1.50]

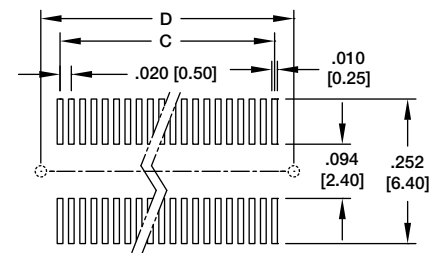
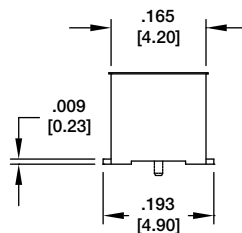
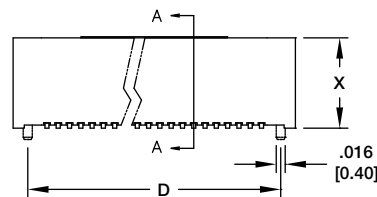
B = .020 [0.50] x (No. of Positions per row) - .020 [0.50]

C = .020 [0.20] x (No. of Positions per row) + .047 [1.20]

BB5-SO-XXX-G-X.XX-PP-T/R 0.5mm FEMALE



BB5-SO-014-G-X.XX-PP-T/R



PLUG HEIGHT	SOCKET HEIGHT	STACKING HEIGHT
.124 [3.15]	.118 [3.00]	.157 [4.00]
.124 [3.15]	.138 [3.50]	.177 [4.50]
.124 [3.15]	.157 [4.00]	.197 [5.00]
.124 [3.15]	.236 [6.00]	.276 [5.00]

Recommended PCB Layout

Replace (XXX) in Part No. with No. of Positions

Replace (X.XX) in Part No. with stacking height

Positions: 10 thru 100

Options: (-PP) pick/place pad, (-TR) tape and reel packaging

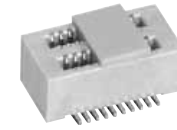
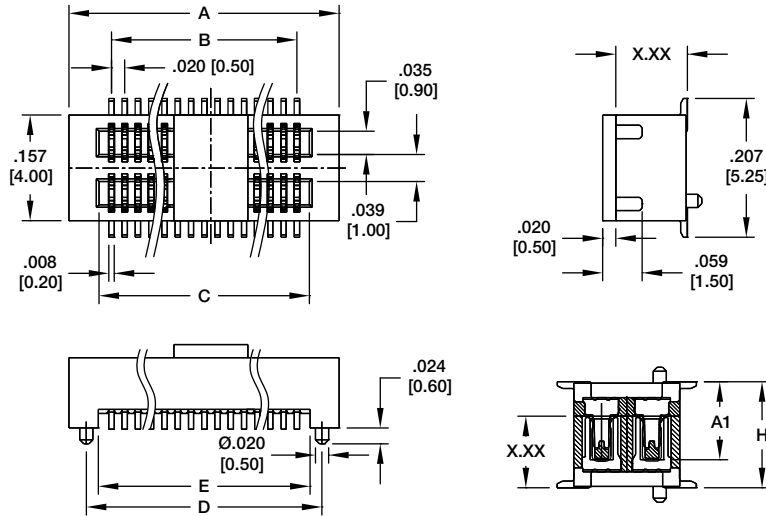
A = .020 [0.50] x (No. of Positions per row) + .098 [2.50]

B = .020 [0.50] x (No. of Positions per row) + .059 [1.50]

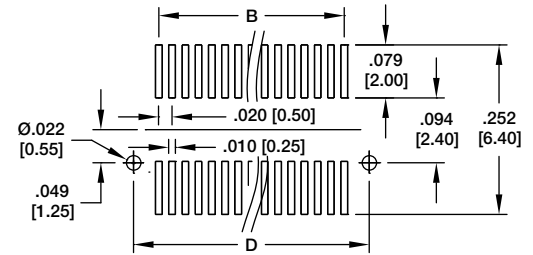
C = .020 [0.50] x (No. of Positions per row) - .020 [0.50]

D = .020 [0.20] x (No. of Positions per row) + .047 [1.20]

BB5-PN-XXX-G-X.XX-PP-T/R 0.5mm MALE



BB5-PN-020-G-X.XX-PP-T/R



Recommended PCB Layout

PLUG (X.XX)	SOCKET HEIGHT (A1)	MATING HEIGHT (H)
.087 [2.20]	.094 [2.40]	.118 [3.00]
	.114 [2.90]	.138 [3.50]
.106 [2.70]	.114 [2.90]	.157 [4.00]
.126 [3.20]	.114 [2.90]	.177 [4.50]
.118 [3.00]	.154 [3.90]	.197 [5.00]
	.173 [4.40]	.217 [5.50]
.138 [3.50]	.173 [4.40]	.236 [6.00]

Replace (XXX) in Part No. with No. of Positions

Replace (X.XX) in Part No. with stacking height

Options: (-PP) pick/place pad, (-TR) tape and reel packaging

Positions: 10, 12, 14 thru 50, 60, 70, 80, 90, 100, 120

A = .020 [0.50] x (No. of Positions per row - 1) + .126 [3.20]

B = .020 [0.50] x (No. of Positions per row - 1)

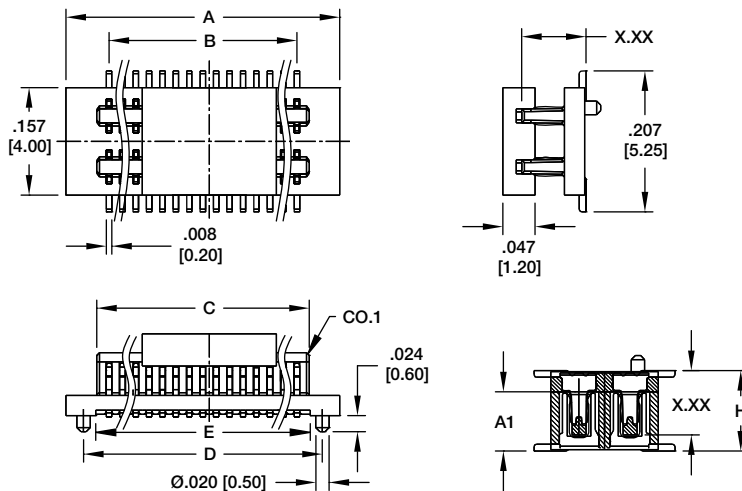
C = .020 [0.50] x (No. of Positions per row - 1) + .038 [0.96]

D = .020 [0.50] x (No. of Positions per row - 1) + .074 [1.90]

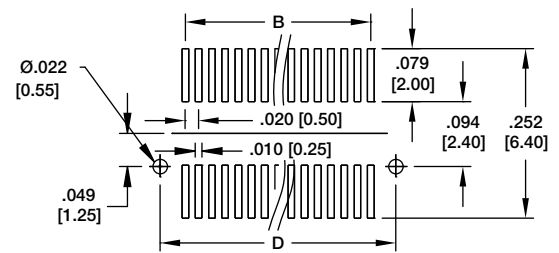
E = .020 [0.50] x (No. of Positions per row - 1) + .039 [1.00]

F = 10-30 POS = .110 [2.80] 32-120 Pos = .157 [4.00]

BB5-SN-XXX-G-X.XX-PP-T/R 0.5mm FEMALE



BB5-SN-020-G-X.XX-PP-T/R



Recommended PCB Layout

SOCKET (X.XX)	PLUG HEIGHT (A1)	MATING HEIGHT (H)
.094 [2.40]	.087 [2.20]	.118 [3.00]
	.087 [2.20]	.138 [3.50]
.114 [2.90]	.106 [2.70]	.157 [4.00]
	.126 [3.20]	.177 [4.50]
.154 [3.90]	.118 [3.00]	.197 [5.00]
	.118 [3.00]	.217 [5.50]
.173 [4.40]	.138 [3.50]	.236 [6.00]

Replace (XXX) in Part No. with No. of Positions

Replace (X.XX) in Part No. with stacking height

Options: (-PP) pick/place pad, (-TR) tape and reel packaging

Positions: 10, 12, 14 thru 50, 60, 70, 80, 90, 100, 120

A = .020 [0.50] x (No. of Positions per row - 1) + .126 [3.20]

B = .020 [0.50] x (No. of Positions per row - 1)

C = .020 [0.50] x (No. of Positions per row - 1) + .036 [0.92]

D = .020 [0.50] x (No. of Positions per row - 1) + .074 [1.90]

E = .020 [0.50] x (No. of Positions per row - 1) + .039 [1.00]